



PRICED FROM  
**\$595,400**

 2,483 - 2,914 Sq Ft

 3 - 5 Beds

 2.5 - 4 Baths

 2 Car Garage

 2.0 Story

- Open Main Level Layout with Large Kitchen with Island Overlooking the Family Room and Private Covered Patio
- Owner's Suite Offers Two Large Walk In Closets and Spacious Bath with Dual Vanities
- Two Secondary Bedrooms on the Upper Level with Shared Full Bath
- Optional Third Level Retreat with Bedroom and Full Bath
- Two Car Rear Entry Garage

[Read More Online](#)

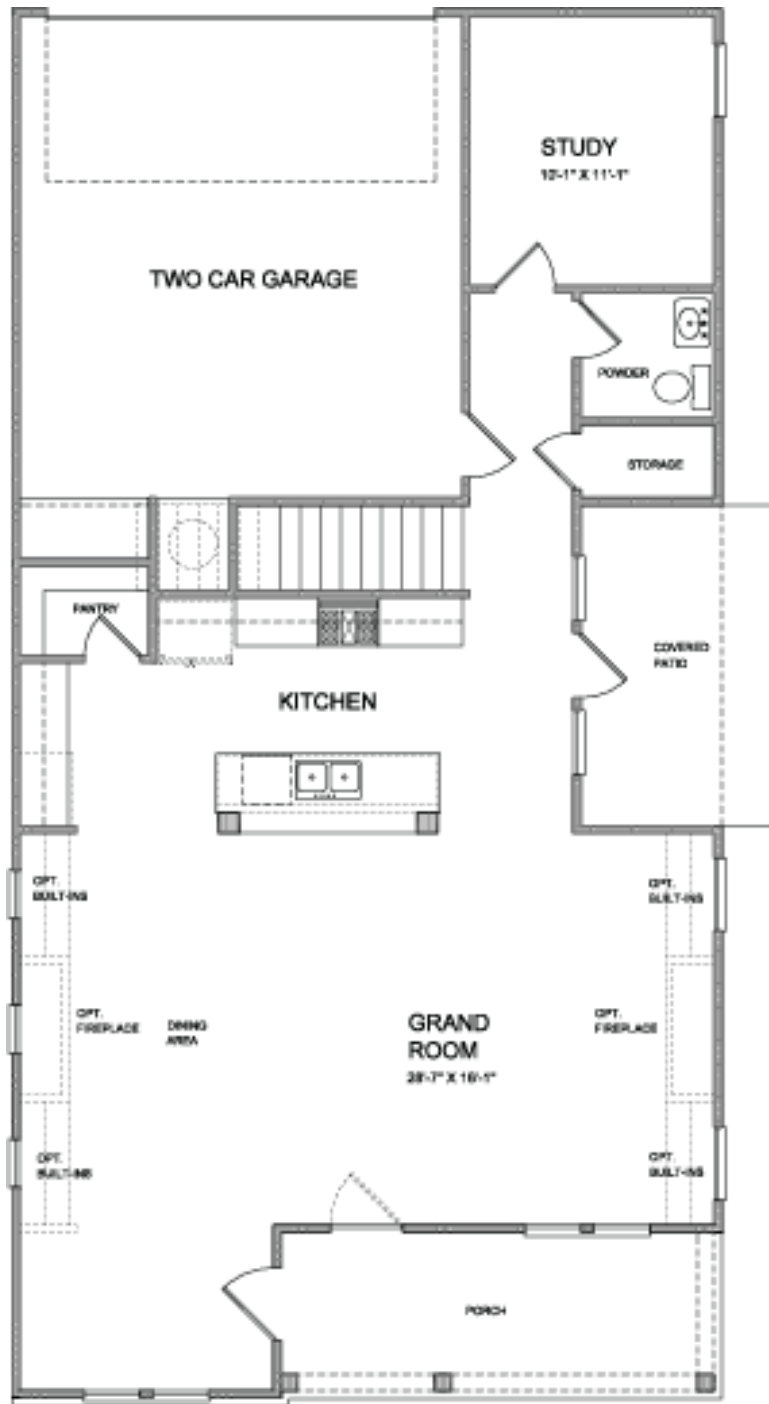
## Available Elevations



Elevation C

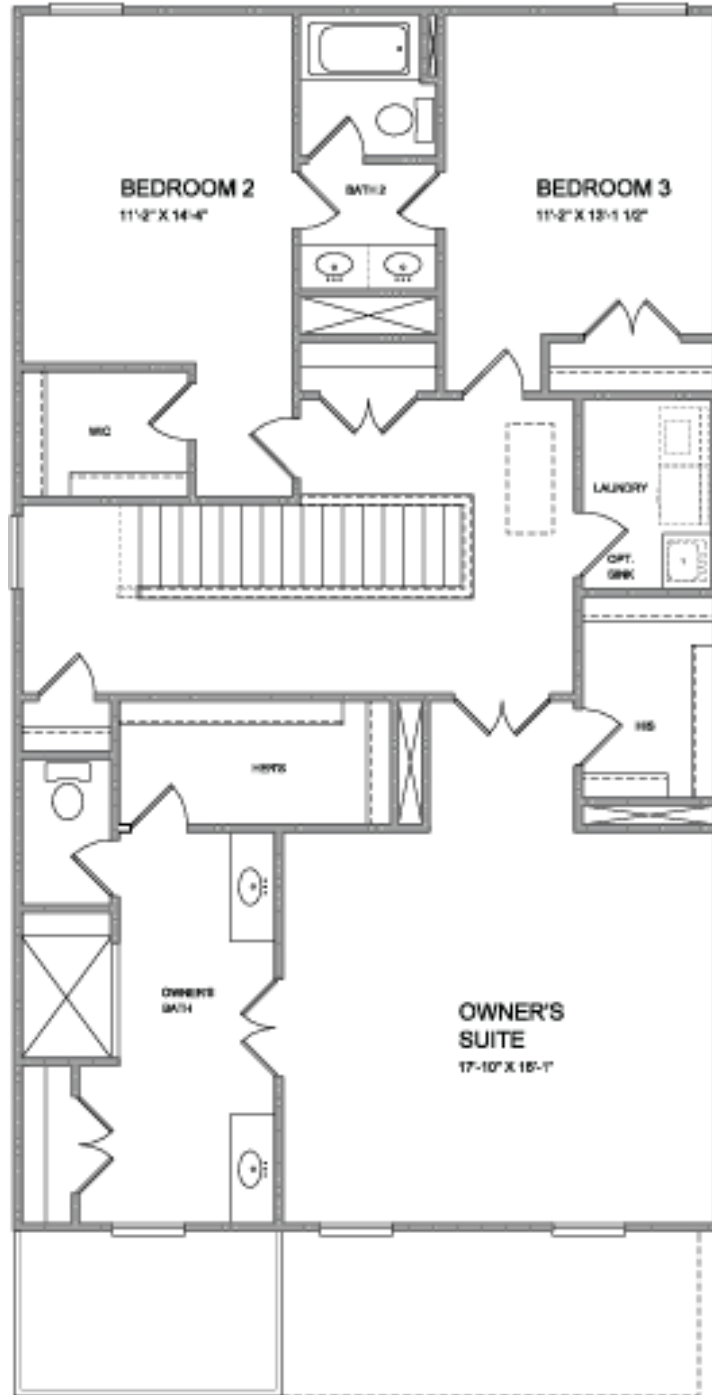


Elevation D



**Want to Know More  
About This Home?**

CONTACT OUR NEW HOME NAVIGATOR  
Call Us @ (770) 521-2151



**Want to Know More  
About This Home?**

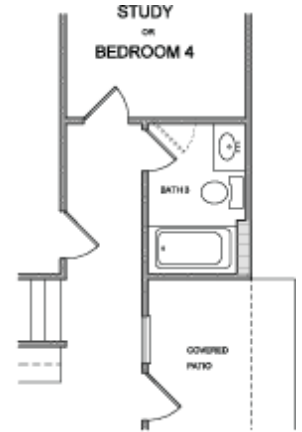
CONTACT OUR NEW HOME NAVIGATOR  
Call Us @ (770) 521-2151



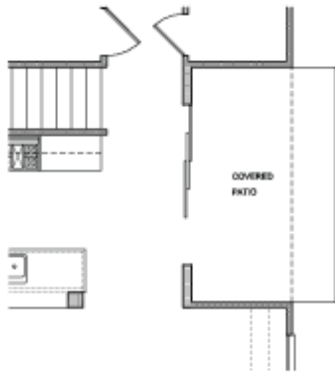
OPTION  
 WHEN EXTERIOR STORAGE SHED



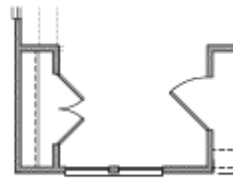
OPTION  
 WHEN STUDY & CLOSET WITH SHED STORAGE



OPTION  
 WHEN BATH 3 ILD STORAGE



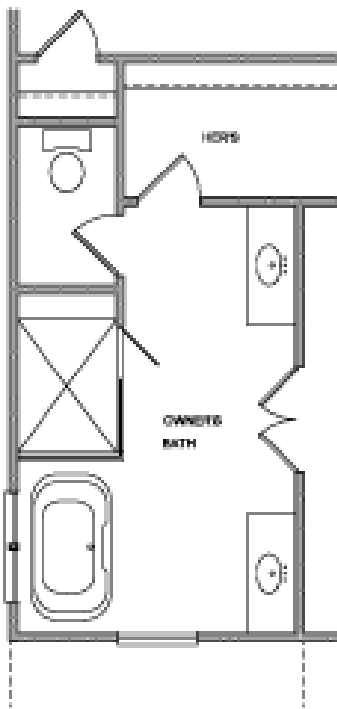
OPTION  
 WHEN 8' SLIDING GLASS DOOR



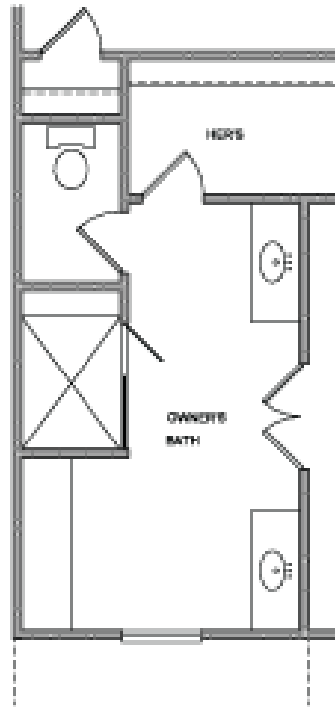
OPTION  
 WHEN COAT CLOSET

**Want to Know More  
 About This Home?**

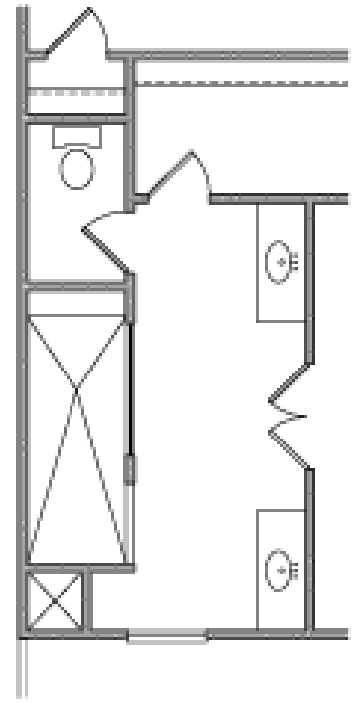
CONTACT OUR NEW HOME NAVIGATOR  
 Call Us @ (770) 521-2151



WHEN FREE STANDING TUB



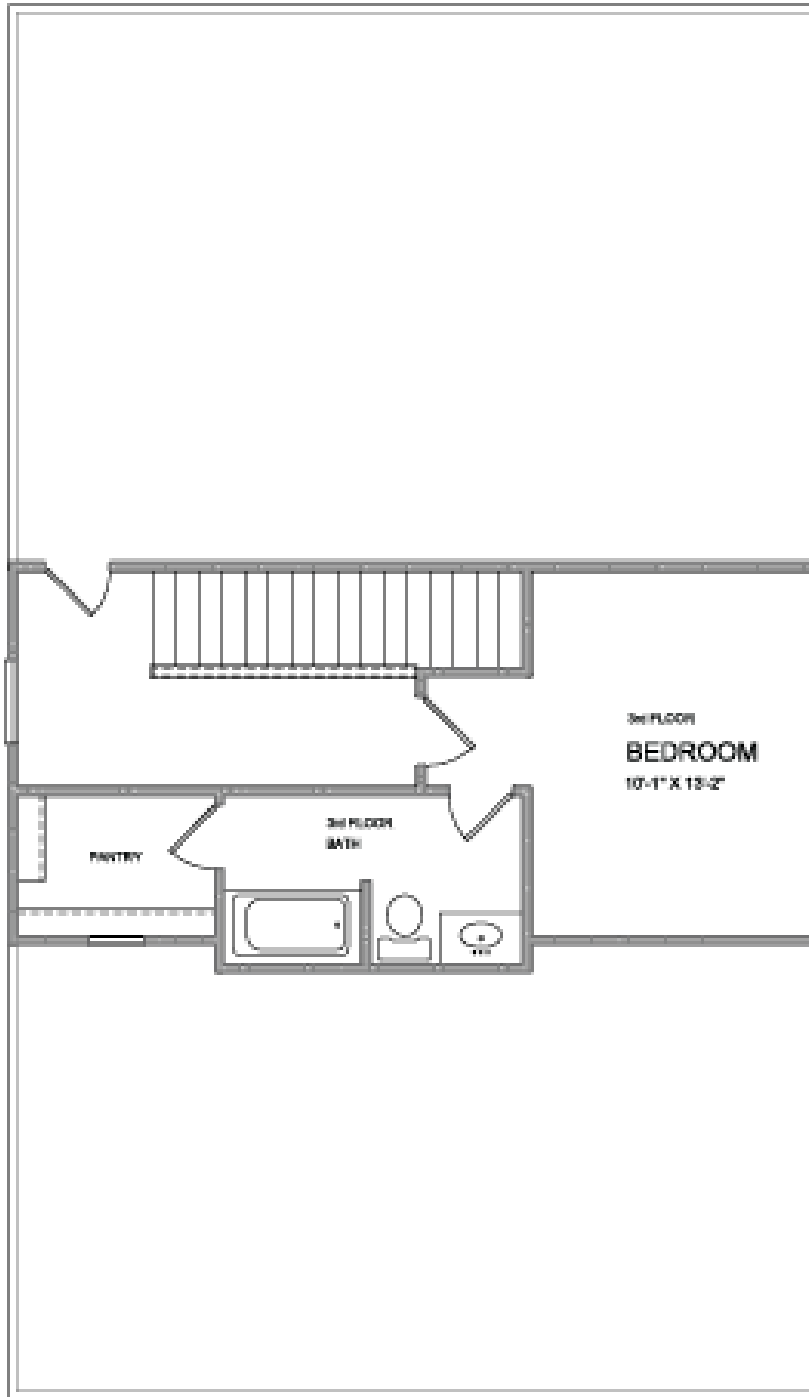
WHEN MAKE-UP AREA



OWNER'S WALK-IN SHOWER

**Want to Know More  
About This Home?**

CONTACT OUR NEW HOME NAVIGATOR  
Call Us @ (770) 521-2151



**Want to Know More  
About This Home?**

CONTACT OUR NEW HOME NAVIGATOR  
Call Us @ (770) 521-2151