








PRICED AT
\$553,400

-  1694 Sq Ft
-  2 Beds
-  2.5 Baths
-  1 Car Garage
-  3.0 Story

Barnsley I by The Providence Group – 2 Bed / 2.5 Bath + Media Room on Terrace Level featuring hardwoods w/ 3 - 9 ft slider doors looking onto your West facing covered patio & fenced in courtyard! Covered Patio includes GFCI outlet ideal for hanging TVs to kick off Spring in Alpharetta! These rear entry townhome feature 1 car garage w/ ample storage space, Electric Car Outlet plus driveway long enough to park 2nd car. Bright & Open Concept Main Level features 9 ft ceilings, 6 ft energy efficient windows & Kitchen ideally situated in front of home! Whirlpool Stainless Steel Appliances built into Full white Cabinet Overlay w/ soft close doors, undercabinet lightings & Carrera Quartz Countertops & Island! Our L shaped kitchen looks onto the open concept dining room, living room, and back east facing deck! Upper-level features huge Master Suite with tray ceilings! Master Bath includes dual vanities with white Quartz countertops, 6 ft shower w/ frameless door & Walk in Closet! Laundry located in hall outside of Master. Bedroom 2 located opposite end of Master wing featuring walk in closet & spacious full bathroom! Est Completion: May/June 2022 ~HOA: Dues include Professional Community Management. Save ...

Want to Know More
About This Home?

CONTACT OUR COMMUNITY SALES MANAGER
Call Us @ 678.591.1930



TERRACE

Elevation N

Want to Know More
About This Home?

CONTACT OUR COMMUNITY SALES MANAGER
Call Us @ 678.591.1930

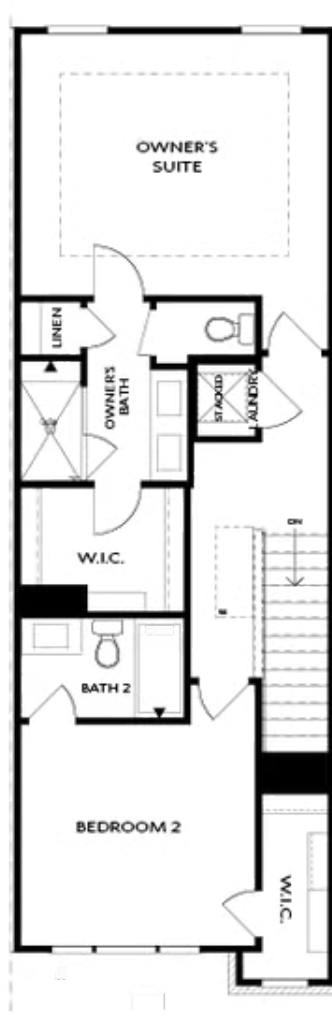


SECOND FLOOR

Elevation N

Want to Know More
About This Home?

CONTACT OUR COMMUNITY SALES MANAGER
Call Us @ 678.591.1930



THIRD FLOOR

Elevation N

Want to Know More
About This Home?

CONTACT OUR COMMUNITY SALES MANAGER
Call Us @ 678.591.1930



OPT Wet Bar



OPT Covered Deck



OPT Slider Door



OPT End Balcony



OPT Linear Fireplace

OPTIONS

Want to Know More
About This Home?

CONTACT OUR COMMUNITY SALES MANAGER
Call Us @ 678.591.1930