



PRICED AT
\$553,400

 1694 Sq Ft

 2 Beds

 2.5 Baths

 1 Car Garage

 3.0 Story

Barnesley I by The Providence Group - 2 Bed / 2.5 Bath + Media Room on Terrace Level featuring hardwoods w/ 3 - 9 ft slider doors looking onto your West facing covered patio & fenced in courtyard! Covered Patio includes GFCI outlet ideal for hanging TVs to kick off Spring in Alpharetta! These rear entry townhome feature 1 car garage w/ ample storage space, Electric Car Outlet plus driveway long enough to park 2nd car. Bright & Open Concept Main Level features 9 ft ceilings, 6 ft energy efficient windows & Kitchen ideally situated in front of home! Whirlpool Stainless Steel Appliances built into Full white Cabinet Overlay w/ soft close doors, undercabinet lightings & Carrera Quartz Countertops & Island! Our L shaped kitchen looks onto the open concept dining room, living room, and back east facing deck! Upper-level features huge Master Suite with tray ceilings! Master Bath includes dual vanities with white Quartz countertops, 6 ft shower w/ frameless door & Walk in Closet! Laundry located in hall outside of Master. Bedroom 2 located opposite end of Master wing featuring walk in closet & spacious full bathroom! Est Completion: May/June 2022 -HOA: Dues include Professional Community Management. Save ...

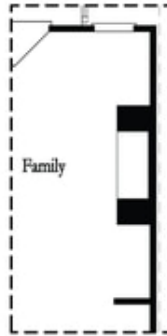
**Want to Know More
About This Home?**

CONTACT OUR COMMUNITY SALES MANAGER
Call Us @ 678.591.1930



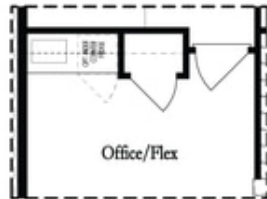
**Want to Know More
About This Home?**

**CONTACT OUR COMMUNITY SALES MANAGER
Call Us @ 678.591.1930**

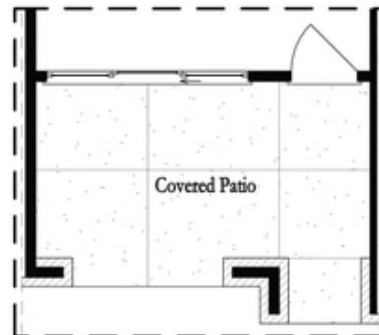


Opt. Linear Fireplace

Second Floor Options



Opt. Wet Bar



Opt. Slider Door

First Floor Options

**Want to Know More
About This Home?**

CONTACT OUR COMMUNITY SALES MANAGER
Call Us @ 678.591.1930