



PRICED AT
\$549,400

 1837 Sq Ft

 2 Beds

 3.5 Baths

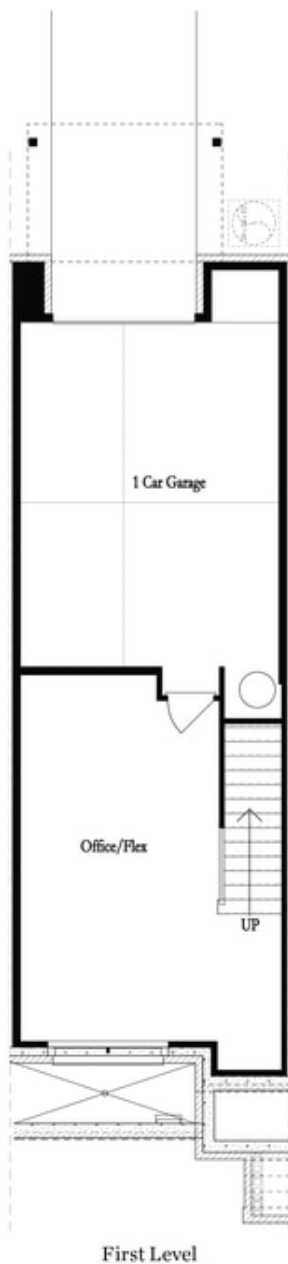
 1 Car Garage

 3.0 Story

The Barnesley II by The Providence Group. ~ UNDER CONSTRUCTION w/ estimated completion APRIL/MAY 2022~ 2 Bed / 3.5 Bath / Media Room on Terrace Level w/ HOA maintained. Fenced in Front Yard! This desirable 3-story floor plan offers entry on the main level with open concept living. Gourmet kitchen with island and quartz countertops overlooking dining and family room. Spacious deck located off the family room. Owner's Suite with private bath includes dual vanities, large walk-in closet, and shower. Stacked laundry located in the upper level hallway along with the secondary bedroom and full bath. Terrace level room perfect for an office or entertainment space includes full bath. 1 car garage with extra storage space as well as a one car driveway. Discover a setting unlike any other situated in the bustling heart of Alpharetta at North Point. Area features green spaces and vibrant parks plus modern architecture and eco-minded design. Access to restaurants, entertainment and shopping with the redeveloped North Point Mall just 0.2 miles away! Exceptional location with direct entrance to the future Alpharetta loop extension, immediate access to GA 400, and just minutes away from downtown Alpharetta & Avalon.

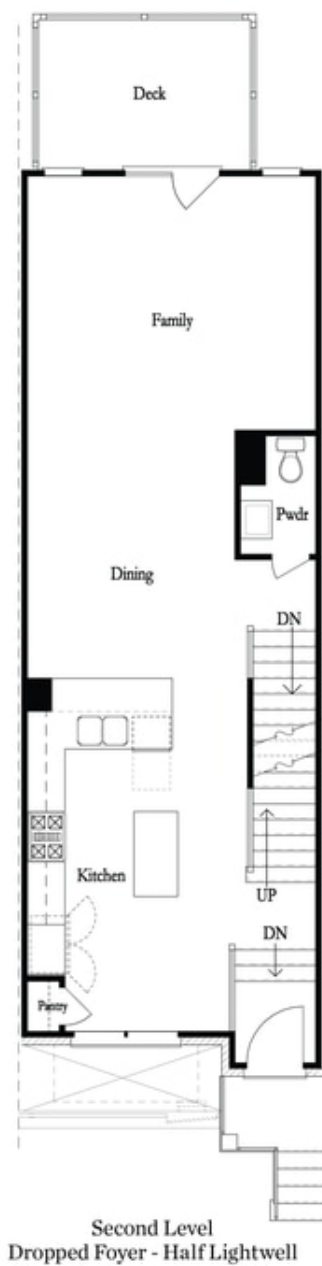
**Want to Know More
About This Home?**

CONTACT OUR COMMUNITY SALES MANAGER
Call Us @ (678) 591-1930



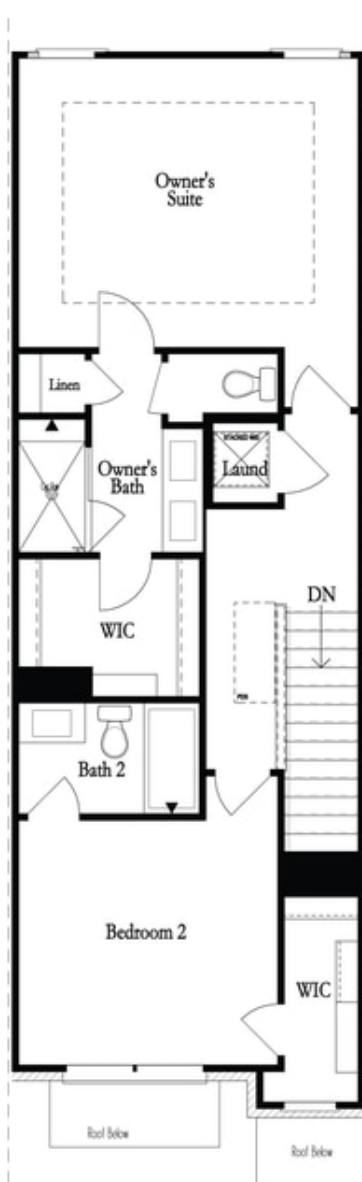
Want to Know More
About This Home?

CONTACT OUR COMMUNITY SALES MANAGER
Call Us @ (678) 591-1930



**Want to Know More
About This Home?**

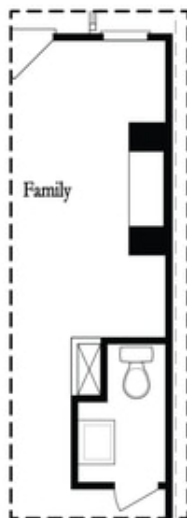
CONTACT OUR COMMUNITY SALES MANAGER
Call Us @ (678) 591-1930



Third Level

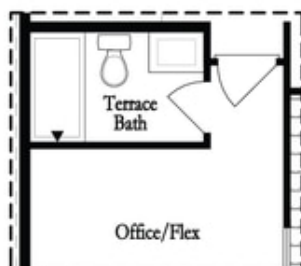
**Want to Know More
About This Home?**

CONTACT OUR COMMUNITY SALES MANAGER
Call Us @ (678) 591-1930

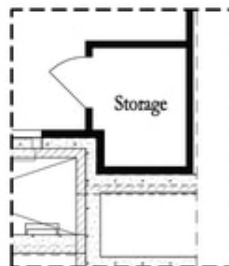


Opt. Linear Fireplace

Main Level Options



Opt. Full Bath



*Storage When
Dropped Foyer Above*

Terrace Level Options

**Want to Know More
About This Home?**

CONTACT OUR COMMUNITY SALES MANAGER
Call Us @ (678) 591-1930