




PRICED AT
\$776,295

 2145 Sq Ft

 3 Beds

 2.5 Baths

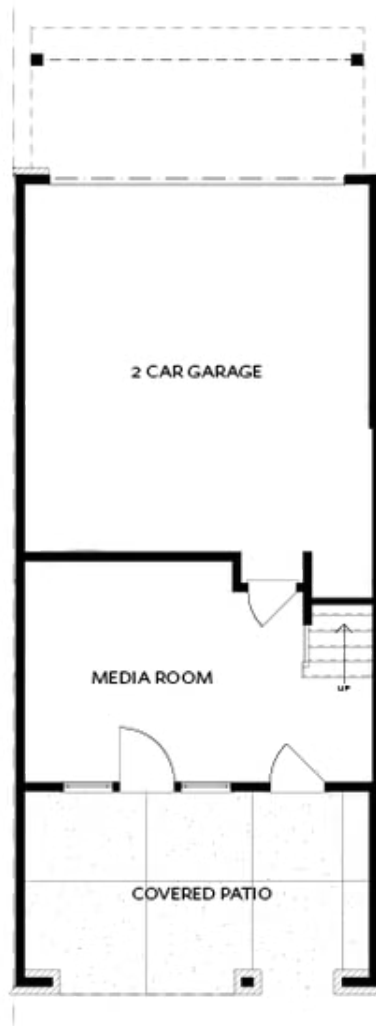
 2 Car Garage

 3.0 Story

MODEL HOME FOR SALE! Season of Savings - Build your Savings & Unwrap the Joy of a New Home with \$25k Promotion! Promotion can be applied toward price reduction, closing costs or rate buydown - giving you the flexibility to save where it matters most. Ends Nov 30, 2025. Discover the Benton I MODEL HOME by The Providence Group. This amazing model home is an END UNIT, has multiple upgrades and sits on corner lot with the prettiest view of the community! Enjoy elevated living with premium features & thoughtful layout. This stunning home features a covered terrace patio with outdoor fireplace, perfect for relaxing or entertaining year round. Entry at the terrace level opens into a spacious flex room with sliding door that leads to the outdoor living space. The flex room is ideal for home theater, office or game room. An upgraded accent wall and hardwood stair treads lead to the 2nd floor main living space. Step into a beautifully designed main floor that seamlessly blends style and functionality. The open-concept kitchen features sleek stone colored cabinetry, modern appliances, quartz countertops, under cabinet lighting, soft close doors & a spacious island perfect for casual dining or entertaining. Just ...

Want to Know More
About This Home?

CONTACT OUR COMMUNITY SALES MANAGER
Call Us @ 678.591.1930

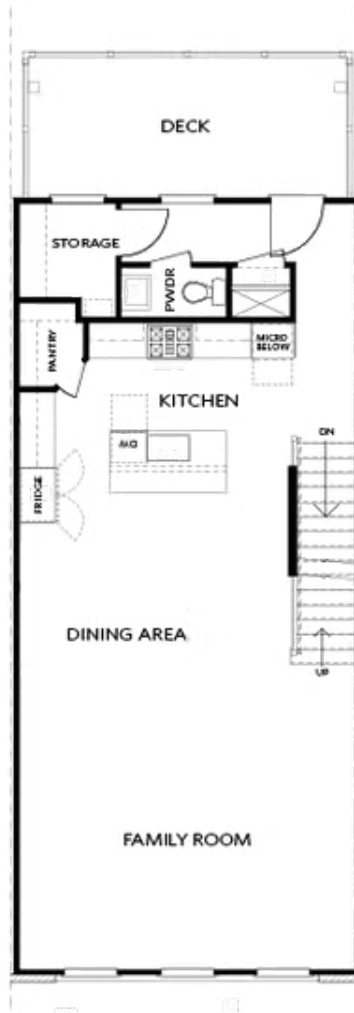


TERRACE

Elevation N

Want to Know More
About This Home?

CONTACT OUR COMMUNITY SALES MANAGER
Call Us @ 678.591.1930



SECOND FLOOR

Elevation N

Want to Know More
About This Home?

CONTACT OUR COMMUNITY SALES MANAGER
Call Us @ 678.591.1930



THIRD FLOOR

Elevation N

Want to Know More
About This Home?

CONTACT OUR COMMUNITY SALES MANAGER
Call Us @ 678.591.1930



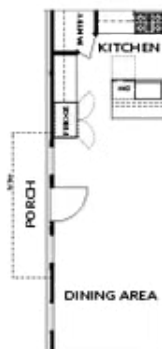
OPT Patio Fireplace



OPT Slider Door

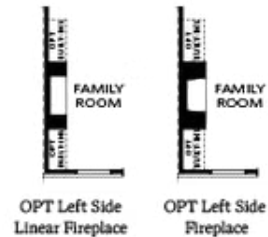


OPT Laundry
(only available with 3rd bedroom opt)



OPT Side Porch
(end unit only)

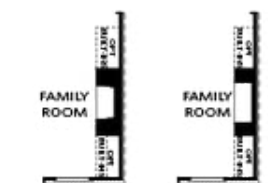
TERRACE



OPT Left Side
Linear Fireplace



OPT Left Side
Fireplace



OPT Right Side
Fireplace



OPT Right Side
Linear Fireplace



OPT Sunroom

SECOND FLOOR

OPTIONS

Want to Know More
About This Home?

CONTACT OUR COMMUNITY SALES MANAGER
Call Us @ 678.591.1930



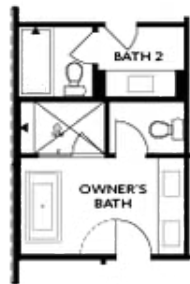
OPT Open Rail



OPT Bedroom 3 - ONLY Available
with Optional Sunroom



OPT Walk-Through Shower



OPT Freestanding
Tub/Shower Combo



OPT Decked Tub/
Shower Combo

OPTIONS

Want to Know More
About This Home?

CONTACT OUR COMMUNITY SALES MANAGER
Call Us @ 678.591.1930