








PRICED AT  
**\$565,400**

-  1694 Sq Ft
-  2 Beds
-  2.5 Baths
-  1 Car Garage
-  3.0 Story

Unbeatable Alpharetta location! Just minutes away from numerous dining options, retail space, trails, & more! 0.2 miles from the new North Point Redevelopment District, 0.7 miles from the Big Creek Greenway entrance, 1.9 miles from Downtown Alpharetta, 2 miles from Avalon, & direct entrance to the future Alpha Loop Extension. Hurry in for this time-sensitive option to select your finishes from our one of our New Upgraded Design Collections! This three-story, 2 bed, 2.5 bath floor plan offers an ideal indoor/outdoor entertainment space w/ a terrace level media room which features 3 panel, sliding glass doors that look onto front covered patio & fenced in front yard. Low maintenance living with HOA covering landscaping, roof maintenance, gutter cleaning, perimeter fencing maintenance, weekly trash & recycle pick up, & more! Spacious & open main level includes Gourmet Kitchen with sought-after, modern features such as MSI Quartz Countertops, Cabinets w/ soft close doors & under cabinet lighting, GE Stainless Steel Appliances, & more! Kitchen overlooks dining & living Room. Large deck located off the Living Room. Owner's Suite with private bath includes dual vanities, large walk-in closet, and shower. Stacked laundry located in the upper level hallway along with the secondary bedroom ...

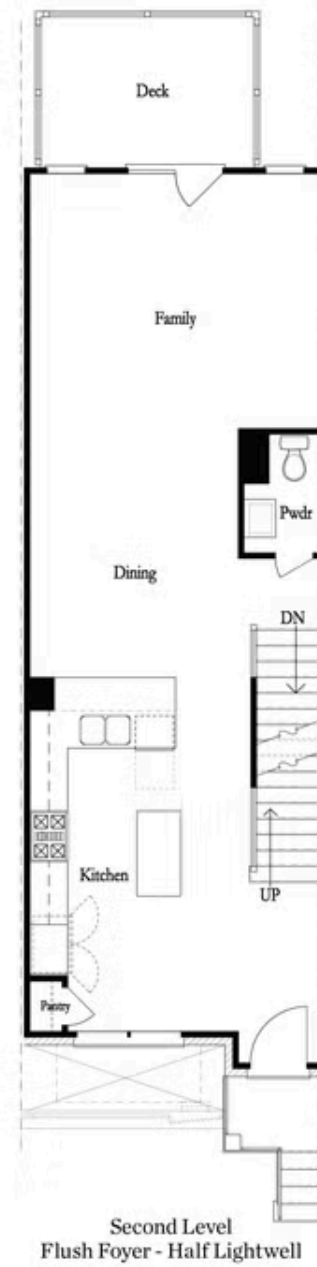
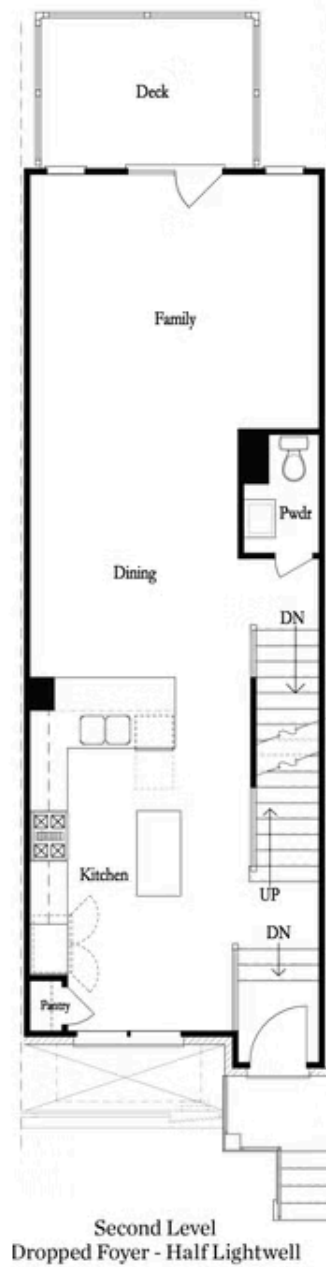
**Want to Know More  
About This Home?**

CONTACT OUR COMMUNITY SALES MANAGER  
Call Us @ 678.591.1930



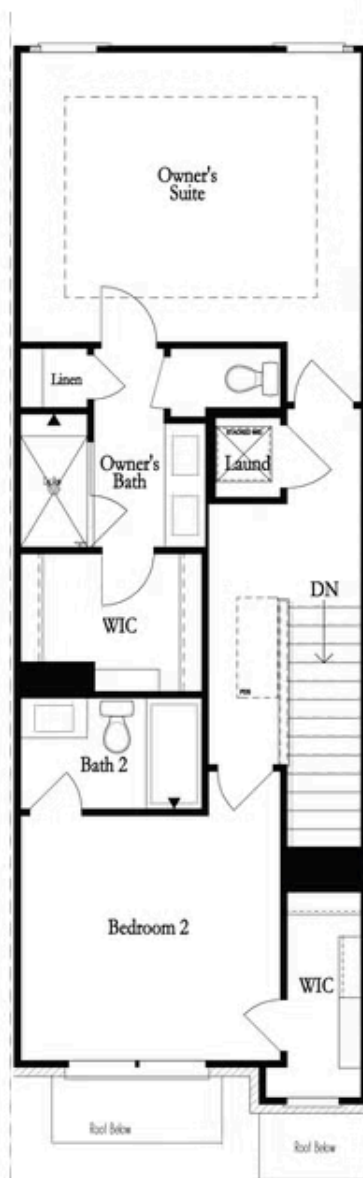
Want to Know More  
About This Home?

CONTACT OUR COMMUNITY SALES MANAGER  
Call Us @ 678.591.1930



Want to Know More  
About This Home?

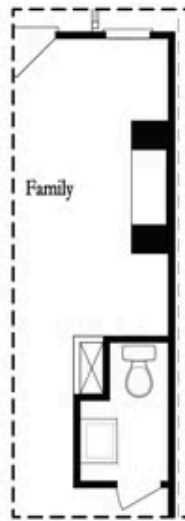
CONTACT OUR COMMUNITY SALES MANAGER  
Call Us @ 678.591.1930



Third Level

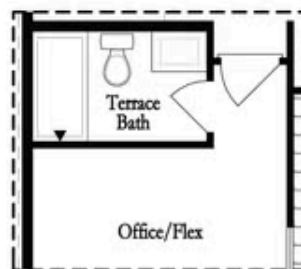
Want to Know More  
About This Home?

CONTACT OUR COMMUNITY SALES MANAGER  
Call Us @ 678.591.1930

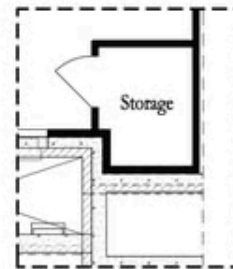


*Opt. Linear Fireplace*

### Main Level Options



*Opt. Full Bath*



*Storage When  
Dropped Foyer Above*

### Terrace Level Options

Want to Know More  
About This Home?

CONTACT OUR COMMUNITY SALES MANAGER  
Call Us @ 678.591.1930