



PRICED AT
\$565,400

 1694 Sq Ft

 2 Beds

 2.5 Baths

 1 Car Garage

 3.0 Story

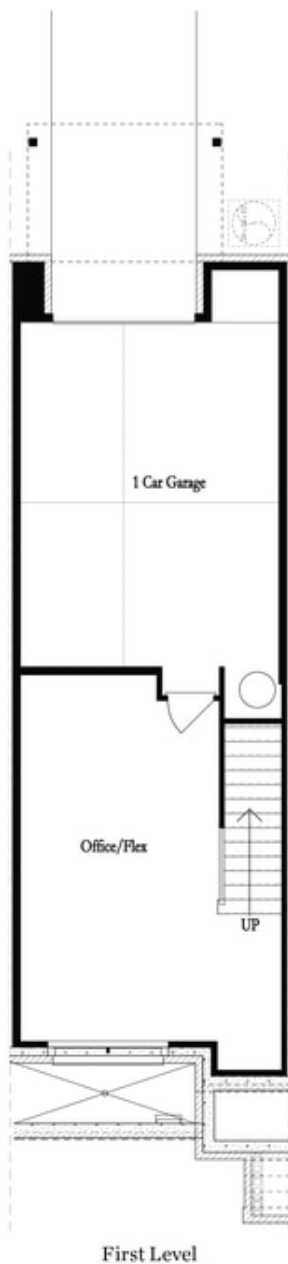
Unbeatable Alpharetta location! Just minutes away from numerous dining options, retail space, trails, & more! 0.2 miles from the new North Point Redevelopment District, 0.7 miles from the Big Creek Greenway entrance, 1.9 miles from Downtown Alpharetta, 2 miles from Avalon, & direct entrance to the future Alpha Loop Extension. Hurry in for this time-sensitive option to select your finishes from our one of our New Upgraded Design Collections! This three-story, 2 bed, 2.5 bath floor plan offers an ideal indoor/outdoor entertainment space w/ a terrace level media room which features 3 panel, sliding glass doors that look onto front covered patio & fenced in front yard. Low maintenance living with HOA covering landscaping, roof maintenance, gutter cleaning, perimeter fencing maintenance, weekly trash & recycle pick up, & more! Spacious & open main level includes Gourmet Kitchen with sought-after, modern features such as MSI Quartz Countertops, Cabinets w/ soft close doors & under cabinet lighting, GE Stainless Steel Appliances, & more! Kitchen overlooks dining & living Room. Large deck located off the Living Room. Owner's Suite with private bath includes dual vanities, large walk-in closet, and shower. Stacked laundry located in the upper level hallway along with the secondary bedroom ...

**Want to Know More
About This Home?**

CONTACT OUR NEW HOME NAVIGATOR

NONE

Call Us @ (678) 591-1930

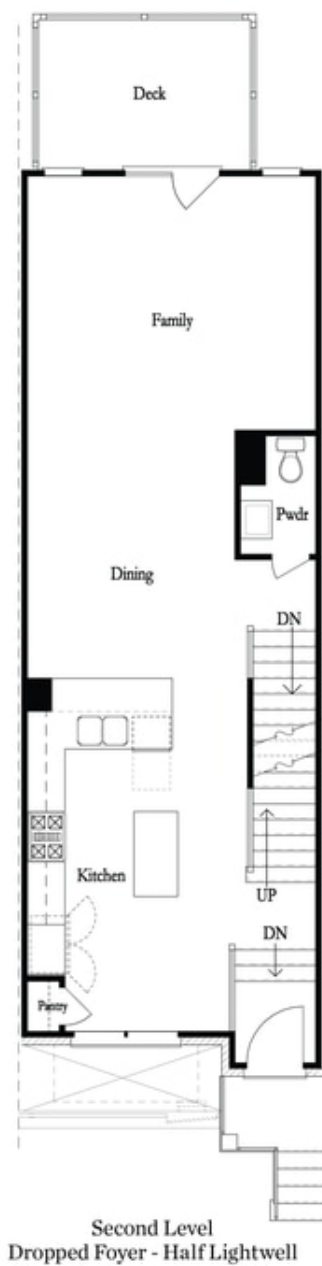


Want to Know More
About This Home?

CONTACT OUR NEW HOME NAVIGATOR

NONE

Call Us @ (678) 591-1930

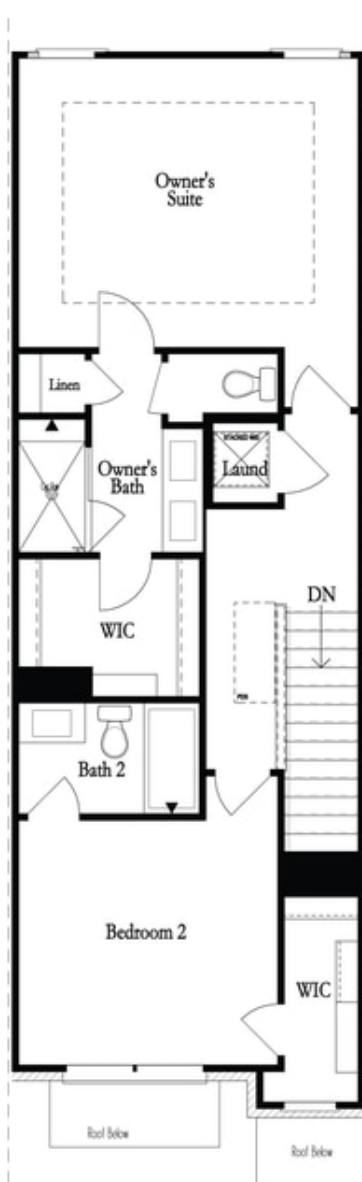


Want to Know More
About This Home?

CONTACT OUR NEW HOME NAVIGATOR

NONE

Call Us @ (678) 591-1930



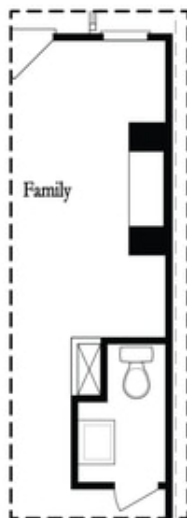
Third Level

Want to Know More
About This Home?

CONTACT OUR NEW HOME NAVIGATOR

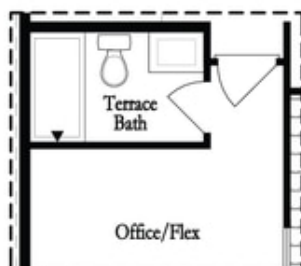
NONE

Call Us @ (678) 591-1930

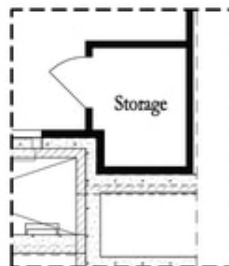


Opt. Linear Fireplace

Main Level Options



Opt. Full Bath



*Storage When
Dropped Foyer Above*

Terrace Level Options

**Want to Know More
About This Home?**

CONTACT OUR NEW HOME NAVIGATOR

NONE

Call Us @ (678) 591-1930