



PRICED AT  
**\$573,800**

 1694 Sq Ft

 2 Beds

 2.5 Baths

 1 Car Garage

 3.0 Story

**OPEN CONCEPT - 42" LINEAR FIREPLACE - MODERN LAYOUT - OUTDOOR ENTERTAINMENT - WET BAR --- 2 Bed / 2.5 Bath + Media Room on Terrace Level featuring a WET BAR, Hardwoods & 3 x 9 ft slider doors looking onto your West facing covered patio & fenced in courtyard! Covered Patio includes GFCI outlet ideal for hanging twinkle lights & TVs to kick off Summer in Alpharetta! Fur Babies will enjoy their own fenced in area that will be maintained by the HOA! These rear entry townhome feature 1 car garage w/ ample storage space, Electric Car Outlet + driveway long enough to park 2nd car. Bright & Open Concept Main Level features 9 ft ceilings, 6 ft energy efficient windows & Kitchen ideally situated in front of home! GE Stainless Steel Appliances built into Full Cabinet Overlay w/ soft close doors, undercabinet lightings & Quartz Countertops & Island (Buyer selects Quartz)! Our L shaped kitchen looks onto the open concept dining room, living room, and back east facing deck! Upper-level features huge Master Suite w/ tray ceilings & LED Lights! Master Bath includes dual vanities with Quartz countertops, 6 ft shower w/ frameless door & Walk in Closet!**  
...

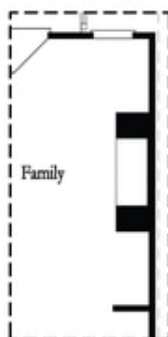
**Want to Know More  
About This Home?**

CONTACT OUR COMMUNITY SALES MANAGER  
Call Us @ (678) 591-1930



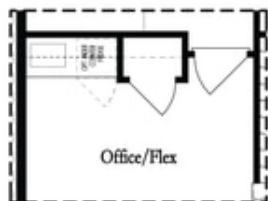
**Want to Know More  
About This Home?**

CONTACT OUR COMMUNITY SALES MANAGER  
Call Us @ (678) 591-1930

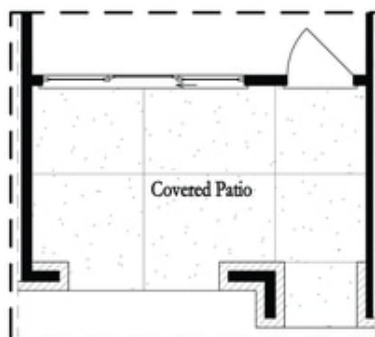


*Opt. Linear Fireplace*

## Second Floor Options



*Opt. Wet Bar*



*Opt. Slider Door*

## First Floor Options

**Want to Know More  
About This Home?**

CONTACT OUR COMMUNITY SALES MANAGER  
Call Us @ (678) 591-1930