



PRICED AT  
**\$673,550**

 **2201 Sq Ft**

 **3 Beds**

 **2.5 Baths**

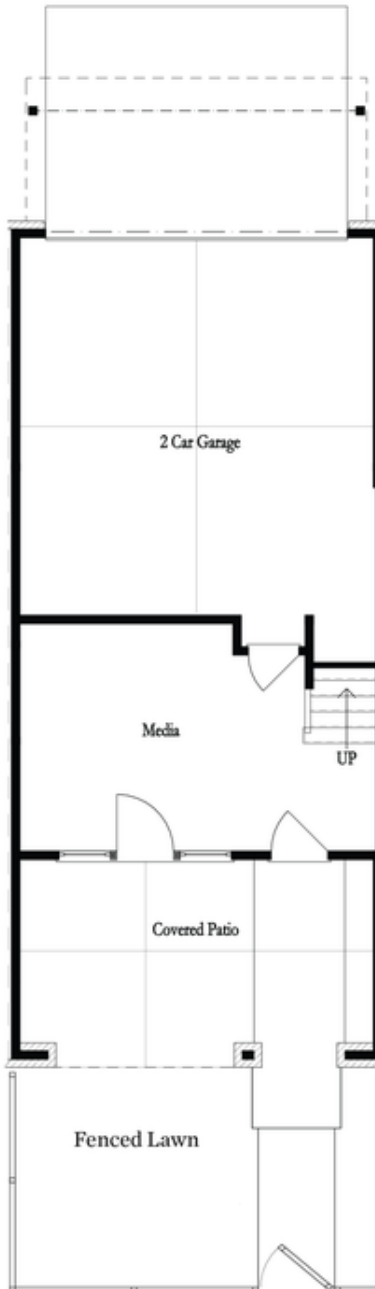
 **2 Car Garage**

 **3.0 Story**

**Elevate your life in 2023! \$20K ANY WAY on contracts written before 2/28/2023 and close 3/31/2023. Reach out to agent for details. One of the most sought after floor plans by The Providence Group - The Benton I - 3 bed / 2.5 bath + Media Room + Sunroom. This spacious home caters to the outdoor entertainment lover! Enter from the rear of home, 2 car garage - includes electric car outlet - into the Terrace Level Media room. Media room provides ideal indoor entertainment space while opening up to covered patio & fenced courtyard - perfect for outdoor entertainment. The main level offers the popular open concept layout with the Kitchen overlooking the dining & living area. Located behind the Kitchen is a Sunroom - great for an office, workout room, art studio, etc. The upper-level features 2 guest bedrooms that share access to a 2nd back deck. An oversized guest bathroom makes guest feel right at home as bathroom door allows for another guest to use the vanity with privacy. The owner's suite is in the front of home with a walk-in closet & owner's suite bathroom that do not disappoint. Enjoy tray ceilings making the owners suite ...**

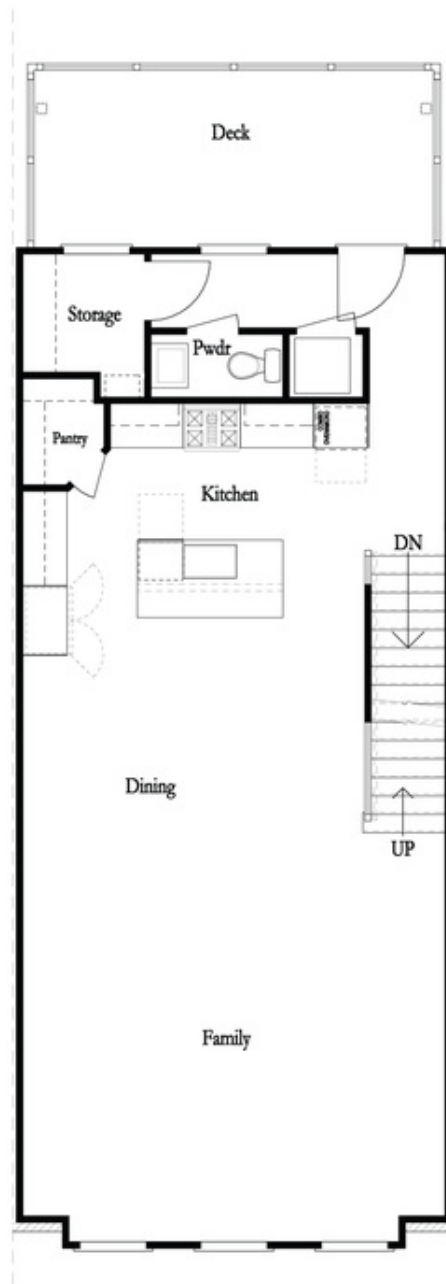
**Want to Know More  
About This Home?**

**CONTACT OUR COMMUNITY SALES MANAGER**  
**Call Us @ 678.591.1930**



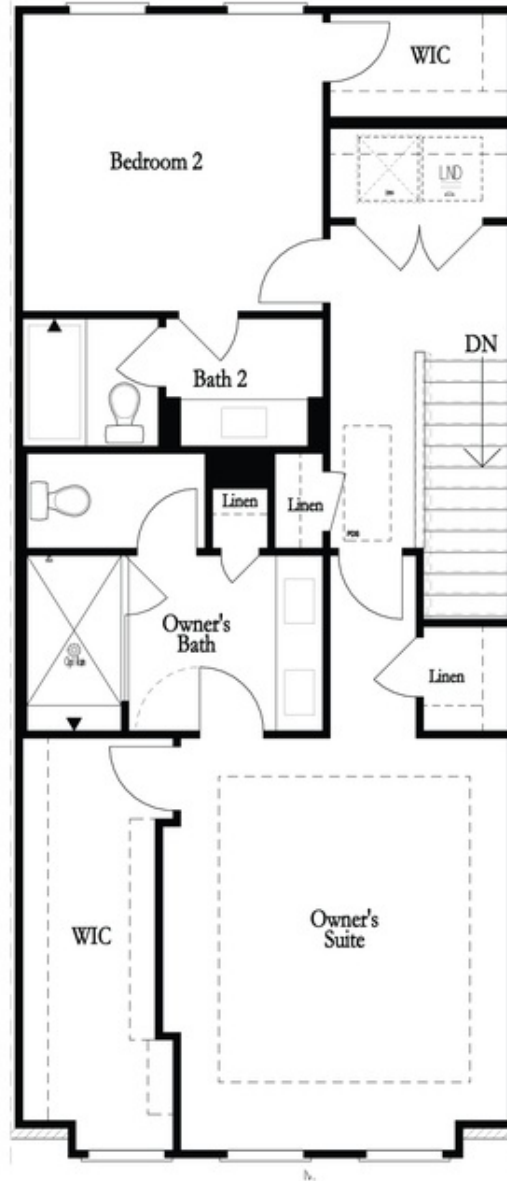
Want to Know More  
About This Home?

CONTACT OUR COMMUNITY SALES MANAGER  
Call Us @ 678.591.1930



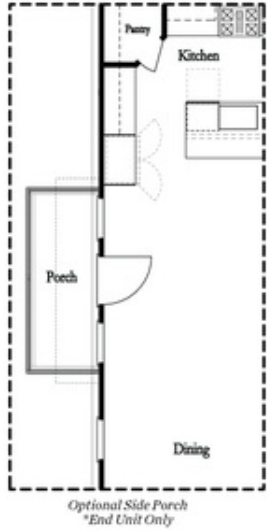
Want to Know More  
About This Home?

CONTACT OUR COMMUNITY SALES MANAGER  
Call Us @ 678.591.1930

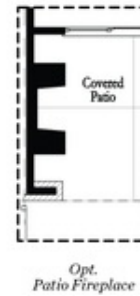
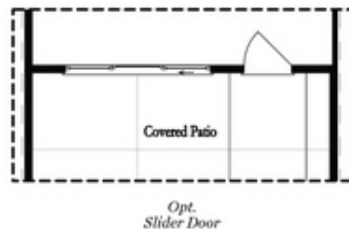
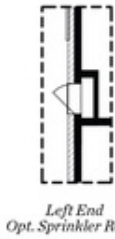


Want to Know More  
About This Home?

CONTACT OUR COMMUNITY SALES MANAGER  
Call Us @ 678.591.1930



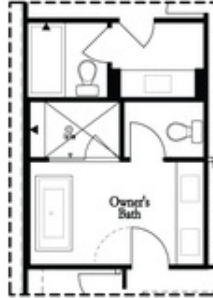
Main Level Options



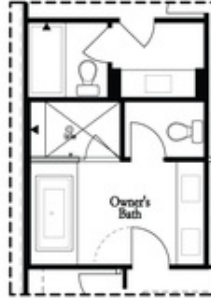
Terrace Level Options

Want to Know More  
About This Home?

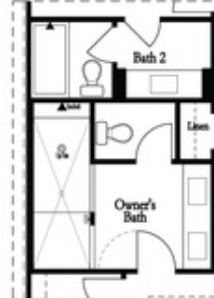
CONTACT OUR COMMUNITY SALES MANAGER  
Call Us @ 678.591.1930



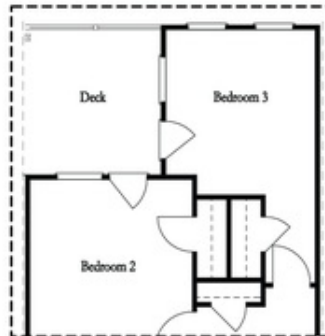
*Opt. Freestanding  
Tub/Shower Combo*



*Opt. Decked  
Tub/Shower Combo*



*Opt. Walk-Through Shower*



*Opt. Bedroom 3  
\*Only Available with Sunroom option  
\*Laundry Moved to Main Level w/ this Opt.*

### Upper Level Options

Want to Know More  
About This Home?

CONTACT OUR COMMUNITY SALES MANAGER  
Call Us @ 678.591.1930