



PRICED AT
\$565,130

 **1694 Sq Ft**

 **2 Beds**

 **2.5 Baths**

 **1 Car Garage**

 **3.0 Story**

Elevate your life in 2023! \$20K ANY WAY on contracts written before 2/28/2023 and close 3/31/2023. Reach out to agent for details. Unbeatable Alpharetta location! Just minutes away from numerous dining options, retail space, trails, & more! 0.7 miles from the Big Creek Greenway entrance, 1.9 miles from Downtown Alpharetta, 2 miles from Avalon, & direct entrance to the future Alpha Loop Extension. This three-story, 2 bed, 2.5 bath floor plan offers an ideal indoor/outdoor entertainment space w/ a terrace level media room which features 3 panel, sliding glass doors that lead onto covered patio & fenced in front courtyard. Low maintenance living with HOA covering landscaping, roof maintenance, gutter cleaning, perimeter fencing maintenance, weekly trash & recycle pick up, & more! Spacious & open main level includes Gourmet Kitchen with sought-after, modern features such as MSI Quartz Countertops, Cabinets w/ soft close doors & under cabinet lighting, GE Stainless Steel Appliances, & more! Kitchen overlooks dining & living Room. Large deck located off the Living Room. Owner's Suite with private bath includes dual vanities, large walk-in closet, and shower. 1 car garage with extra storage space as well as a one car driveway that can be used for additional ...

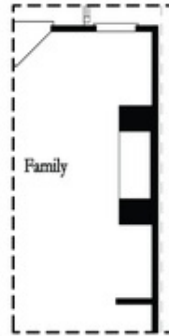
**Want to Know More
About This Home?**

CONTACT OUR COMMUNITY SALES MANAGER
Call Us @ 678.591.1930



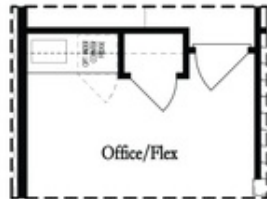
Want to Know More
About This Home?

CONTACT OUR COMMUNITY SALES MANAGER
Call Us @ 678.591.1930

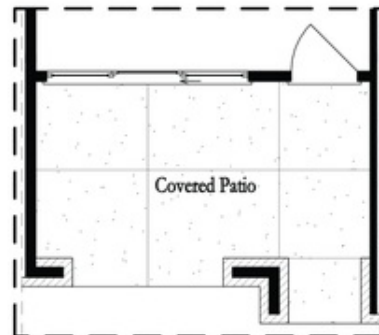


Opt. Linear Fireplace

Second Floor Options



Opt. Wet Bar



Opt. Slider Door

First Floor Options

Want to Know More
About This Home?

CONTACT OUR COMMUNITY SALES MANAGER
Call Us @ 678.591.1930