








PRICED AT
\$572,080

-  1694 Sq Ft
-  2 Beds
-  2.5 Baths
-  1 Car Garage
-  3.0 Story

Elevate your life in 2023! \$20K ANY WAY on contracts written before 2/28/2023 and close 3/31/2023. Reach out to agent for details. Entertainer's dream space! This three-story, 2 bed, 2.5 bath floor plan offers an ideal indoor/outdoor entertainment space w/ a terrace level media room which features 3 panel, sliding glass doors that lead onto covered patio & fenced in front courtyard. Low maintenance living with HOA covering landscaping, roof maintenance, gutter cleaning, perimeter fencing maintenance, weekly trash & recycle pick up, & more! Spacious & open main level includes Gourmet Kitchen with sought-after, modern features such as MSI Quartz Countertops, Cabinets w/ soft close doors & under cabinet lighting, GE Stainless Steel Appliances, & more! Kitchen overlooks dining & living Room with linear fireplace. Large deck located off the Living Room. Owner's Suite with private bath includes dual vanities, large walk-in closet, and shower. 1 car garage with extra storage space as well as a one car driveway that can be used for additional parking. Just minutes away from numerous dining options, retail space, trails, & more! 0.7 miles from the Big Creek Greenway entrance, 1.9 miles from Downtown Alpharetta, 2 miles from Avalon, & direct entrance to the ...

**Want to Know More
About This Home?**

CONTACT OUR COMMUNITY SALES MANAGER
Call Us @ 678.591.1930



TERRACE

Elevation N

Want to Know More
About This Home?

CONTACT OUR COMMUNITY SALES MANAGER
Call Us @ 678.591.1930

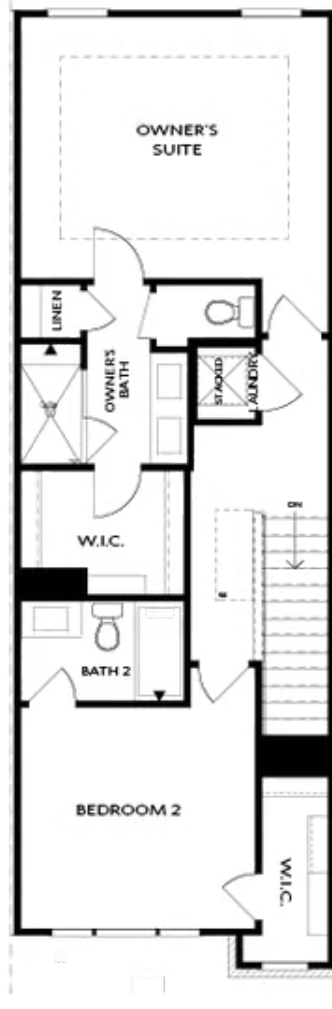


SECOND FLOOR

Elevation N

Want to Know More
About This Home?

CONTACT OUR COMMUNITY SALES MANAGER
Call Us @ 678.591.1930



THIRD FLOOR

Elevation N

Want to Know More
About This Home?

CONTACT OUR COMMUNITY SALES MANAGER
Call Us @ 678.591.1930



OPT Wet Bar



OPT Covered Deck



OPT Slider Door



OPT End Balcony



OPT Linear Fireplace

OPTIONS

Want to Know More
About This Home?

CONTACT OUR COMMUNITY SALES MANAGER
Call Us @ 678.591.1930