



PRICED AT
\$706,650

 2268 Sq Ft

 3 Beds

 3.5 Baths

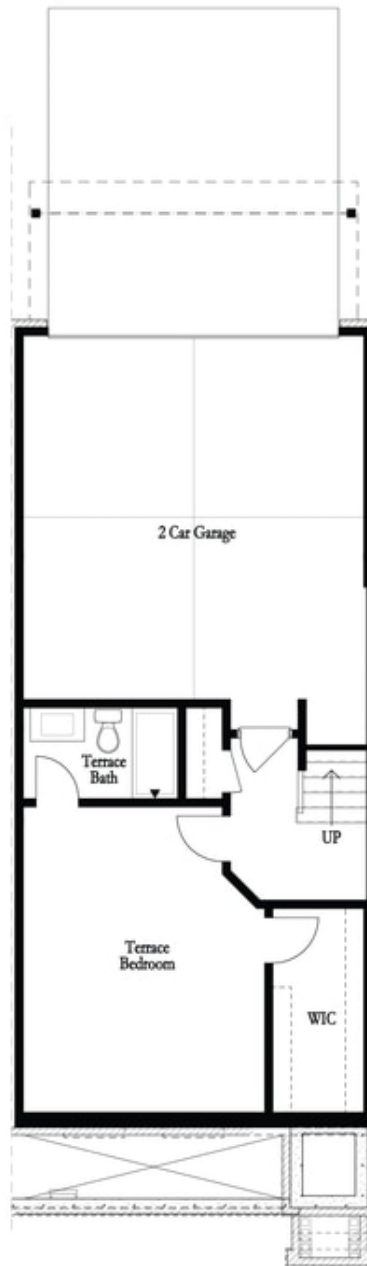
 2 Car Garage

 3.0 Story

Elevate your life in 2023! \$20K ANY WAY on contracts written before 2/28/2023 and close 3/31/2023. Reach out to agent for details. Featuring our newly upgraded Warm Slate Design Collection - END UNIT 86 includes a private bedroom on the terrace level with full bath & spacious walk-in closet + entry on Main Level. Main Level offers a Gourmet Kitchen with sought-after, modern features such as MSI Quartz Countertops, Full Overlay Cabinets w/ soft close doors & under cabinet lighting, GE Stainless Steel Appliances, Walk-In Pantry, & more! Behind the Kitchen you will find a Sunroom, perfect for an office or separate dining space w/ entry to the deck + half bath, & two separate storage closets. Kitchen Island overlooks the open concept Dining & Living Room. Centered in the Living Room is a contemporary linear fireplace w/ wood mantel & stacked stone surround. Additionally, there is a rare side porch located off main main living area that can only be found on end units. Staircase leading from the Main Level to the Upper-Level features metal balusters, w/ Stained Oak handrail and Oak Treads! On the Upper-Level, you will find an oversized Owner's Suite with tray ceilings and large walk-in ...

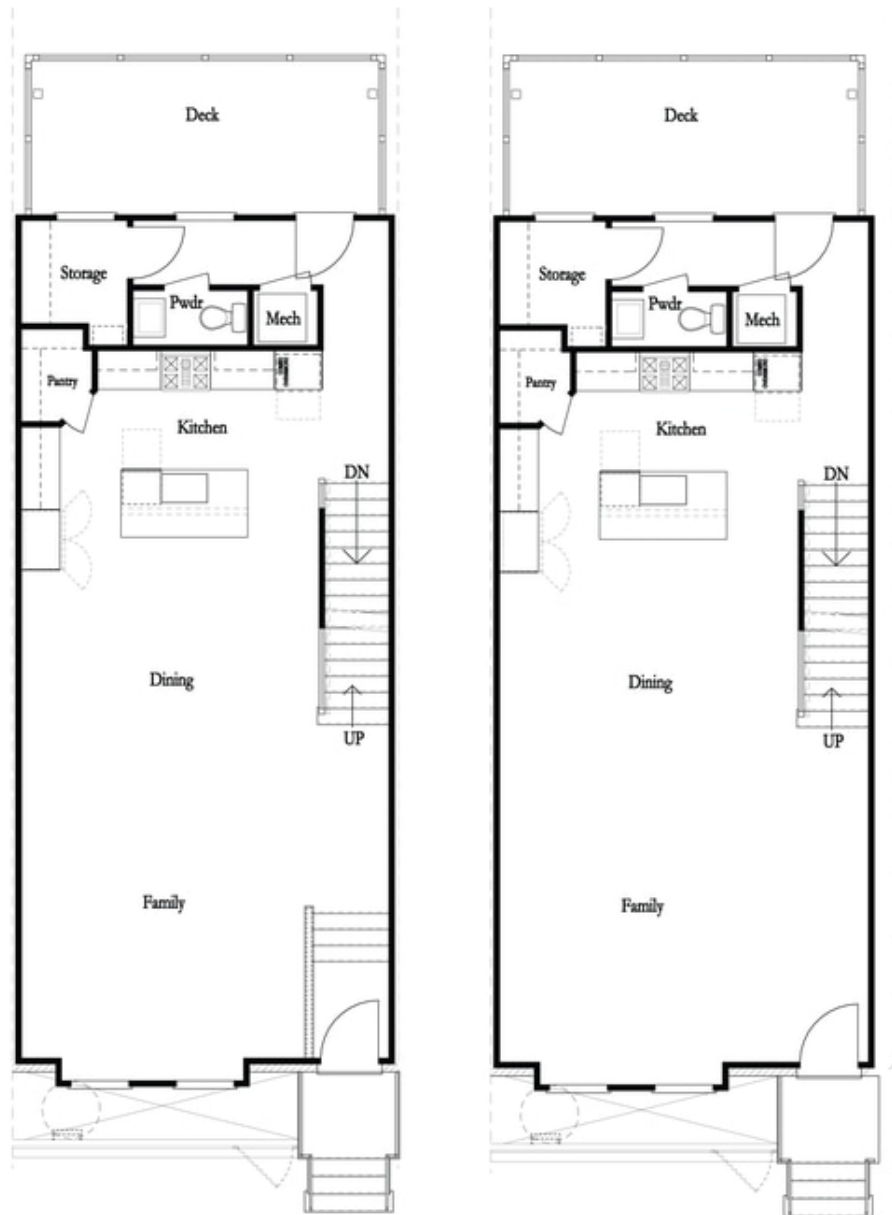
**Want to Know More
About This Home?**

CONTACT OUR COMMUNITY SALES MANAGER
Call Us @ 678.591.1930



**Want to Know More
About This Home?**

CONTACT OUR COMMUNITY SALES MANAGER
Call Us @ 678.591.1930



Want to Know More
About This Home?

CONTACT OUR COMMUNITY SALES MANAGER
Call Us @ 678.591.1930



**Want to Know More
About This Home?**

CONTACT OUR COMMUNITY SALES MANAGER
Call Us @ 678.591.1930

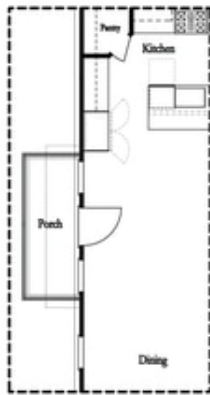


*Left End
 Opt. Sprinkler Room*



*Right End
 Opt. Sprinkler Room*

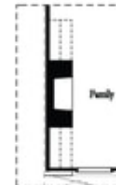
Terrace Level Options



*Optional Side Porch
 End Unit Only



Opt. Sunroom



Opt. 36" Fireplace



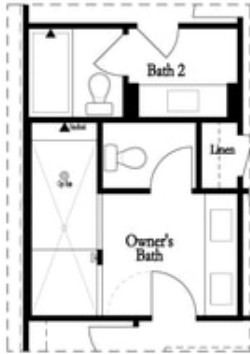
Opt. Linear Fireplace

Main Level Options

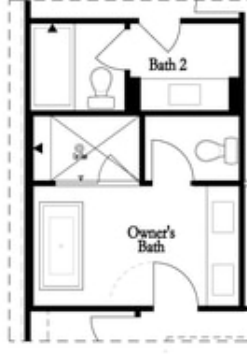
**Want to Know More
 About This Home?**

CONTACT OUR COMMUNITY SALES MANAGER
 Call Us @ 678.591.1930

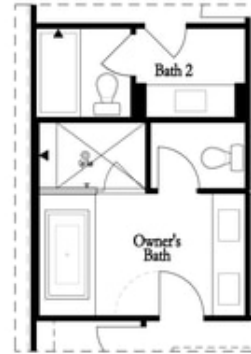
Options



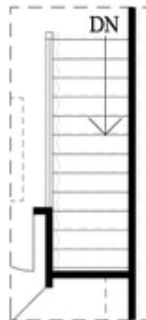
Opt. Walk-Through
Shower



Opt. Freestanding
Tub/Shower Combo



Opt. Decked
Tub/Shower Combo



Opt. Open Rail

Third Floor Options

Want to Know More
About This Home?

CONTACT OUR COMMUNITY SALES MANAGER
Call Us @ 678.591.1930