



PRICED AT
\$582,080

 1694 Sq Ft

 2 Beds

 2.5 Baths

 1 Car Garage

 3.0 Story

SPRING INTO A NEW HOME ... Elevate your lifestyle with this gorgeous 3 story unit #94 Barnesley I , 2 Bedrooms / 2.5 Baths & terrace level media room, in heart of Alpharetta. Terrace level Entry has a private fenced yard, and a covered brick patio with a slider door. The charming outdoor space provides a versatile area for relaxation and entertainment. The terrace level media room offers a retreat like setting for enjoying your favorite entertainment with family & friends. The media room is also equipped with a Wet Bar providing a dedicated spot for beverages and concessions. The home features our Rye Design Collection , with 42" Maple Rye Cabinets, soft close doors and lighting underneath, Raku White 3x12 tile backsplash, GE Smart Stainless Steel Appliances and creamy white Quartz countertops. Open Space concept Kitchen and Living Room makes this floor plan very attractive & is designed to maximize space while fostering a sense of connectivity. As you step inside the Living Room you are enveloped by the cozy ambiance created by a Linear Fireplace with beautiful quartzite from floor to mantel. A tall window & French Door flood the space with natural light. The French door leads ...

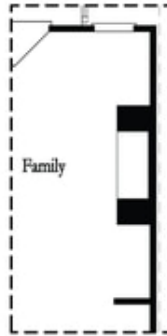
**Want to Know More
About This Home?**

CONTACT OUR COMMUNITY SALES MANAGER
Call Us @ 678.591.1930



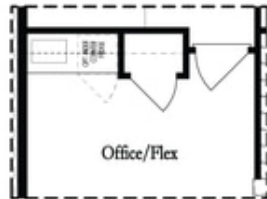
**Want to Know More
 About This Home?**

CONTACT OUR COMMUNITY SALES MANAGER
 Call Us @ 678.591.1930

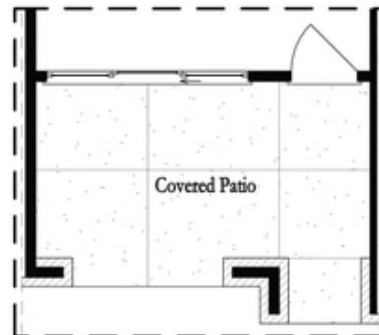


Opt. Linear Fireplace

Second Floor Options



Opt. Wet Bar



Opt. Slider Door

First Floor Options

**Want to Know More
About This Home?**

CONTACT OUR COMMUNITY SALES MANAGER
Call Us @ 678.591.1930