



PRICED AT  
**\$583,190**

 **1674 Sq Ft**

 **2 Beds**

 **2.5 Baths**

 **1 Car Garage**

 **3.0 Story**

**New Year New Home New You! Ask about current incentive **\*\*\$15,000 ANY WAY YOU WANT \*\* ON ALL THE CONTRACTS WRITTEN BY THE END OF FEBRUARY !!!** Enjoy the new year in our unforgettable and beautiful 3 story Barnesley I floor plan featuring 2 Bedrooms and 2.5 Baths , with an chic Front Entry , fenced Front Yard with a key access , and a beautiful Covered Terrace . Front Entry has a Sliding Glass Door that opens up to the Terrace creating an indoor/ outdoor unforgettable experience . Entering the home you go into a Flex/ Media / Office Room with plenty of natural light . Going up is an Open Concept Kitchen / Living Room Rye Design Collection, with 42" inches Cabinets with Crown Molding , Calacatta Prado countertops , Backsplash tile , 2 Kitchen Islands with top of the line GE Appliances , such Gas Cooktop , Electrical Oven , Vent Hood , built in Microwave and Dishwasher. The Ventless Fireplace is in the Living Room adding charm and coziness for the winter evenings. On the upper floor, you have the Master Bedroom with the Master Bath, Dual Vanity and a Frameless Walk In Shower , and ...**

**Want to Know More  
About This Home?**

**CONTACT OUR COMMUNITY SALES MANAGER**  
**Call Us @ 678.591.1930**

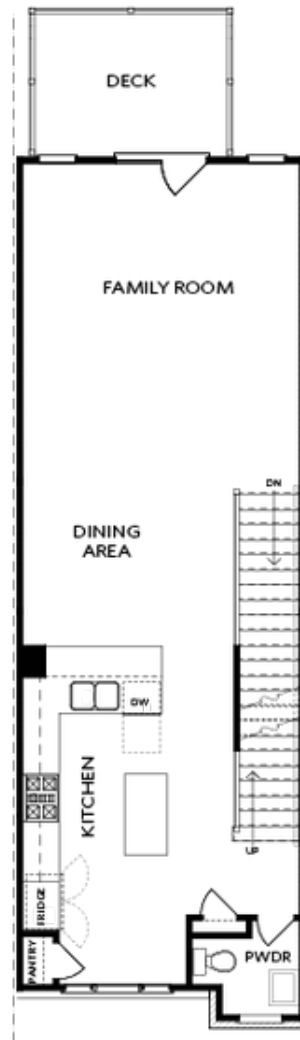


TERRACE

Elevation N

Want to Know More  
About This Home?

CONTACT OUR COMMUNITY SALES MANAGER  
Call Us @ 678.591.1930

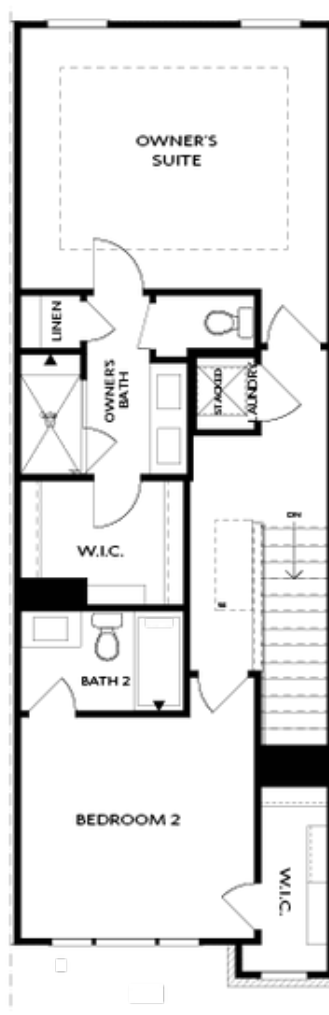


SECOND FLOOR

Elevation N

Want to Know More  
About This Home?

CONTACT OUR COMMUNITY SALES MANAGER  
Call Us @ 678.591.1930



THIRD FLOOR

Elevation N

Want to Know More  
About This Home?

CONTACT OUR COMMUNITY SALES MANAGER  
Call Us @ 678.591.1930



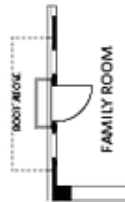
OPT Wet Bar



OPT Covered Deck



OPT Slider Door



OPT End Balcony



OPT Linear Fireplace

## OPTIONS

Want to Know More  
About This Home?

CONTACT OUR COMMUNITY SALES MANAGER  
Call Us @ 678.591.1930