



PRICED AT  
**\$562,800**



1837 Sq Ft



2 Beds



3.5 Baths



1 Car Garage



3.0 Story

Luxury Living in Alpharetta! DESIGNER PACKAGE HOME! 1.5 mile from Avalon, DT Alpharetta & only .2 miles to North Point! Home Site 15 is decked out w/ upgrades: hardwoods throughout WHOLE HOME, 12 x 24 Bath Wall Tile, Quartz Countertops & so much more! Park in OVERSIZED Garage on terrace level featuring ample storage space, Electric Car Outlet + driveway long enough to park 2nd car. HUGE MEDIA ROOM + FULL BATHROOM on terrace level makes for ideal office or guest bedroom. The Brownstone Collection provides main level access through front of home. Pets welcomed to enjoy fenced in front courtyard - Maintained by HOA - while you prep morning coffee in the kitchen also located in the front of home. Our Bright & Open Concept Main Level showcases 9 ft ceilings & 6 ft energy efficient windows! Kitchen catches morning sunlight & provides ample counterspace, pantry & island storage! Enjoy GE Stainless Steel Appliances including GAS Cooktop, oven, hood vent, microwave & dishwasher all built into Full Slate Cabinet Overlay w/ soft close doors, undercabinet lightings & Calacatta Ultra Quartz Countertops & Island! Kitchen looks onto open dining & living room while half bath is tucked away! Catch the ...

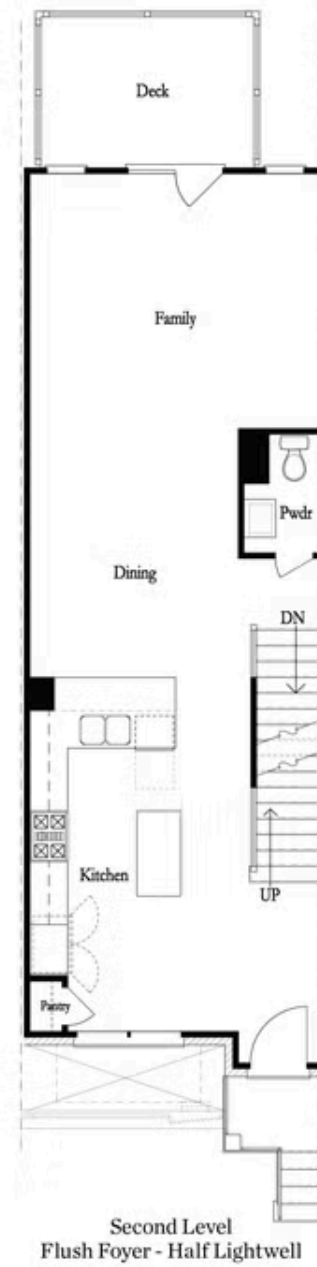
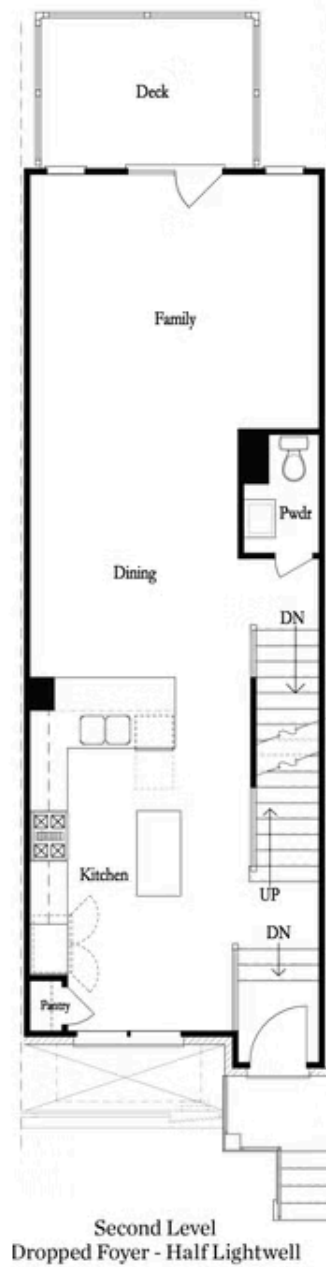
Want to Know More  
About This Home?

CONTACT OUR COMMUNITY SALES MANAGER  
Call Us @ 678.591.1930



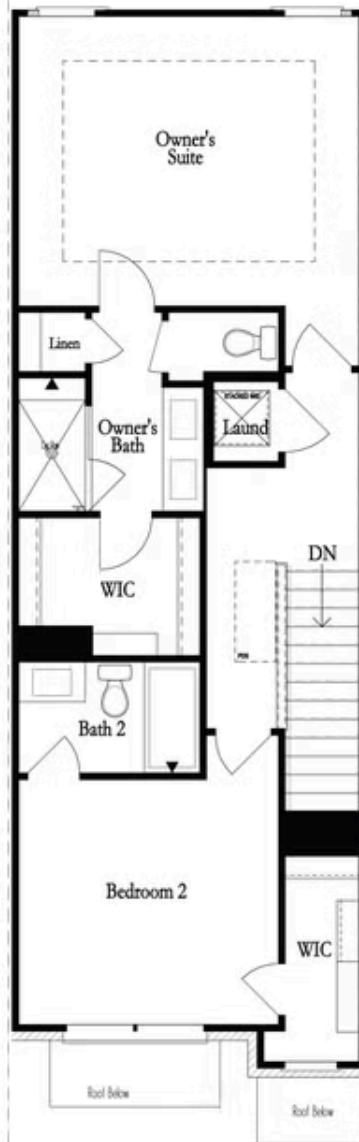
Want to Know More  
About This Home?

CONTACT OUR COMMUNITY SALES MANAGER  
Call Us @ 678.591.1930



Want to Know More  
About This Home?

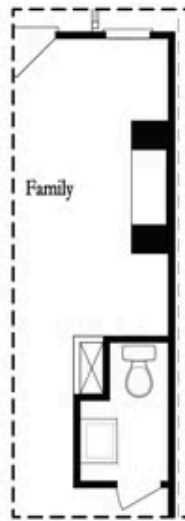
CONTACT OUR COMMUNITY SALES MANAGER  
Call Us @ 678.591.1930



Third Level

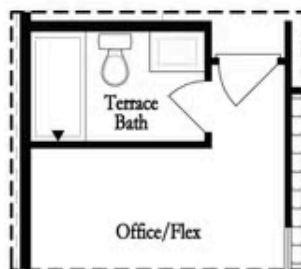
Want to Know More  
About This Home?

CONTACT OUR COMMUNITY SALES MANAGER  
Call Us @ 678.591.1930

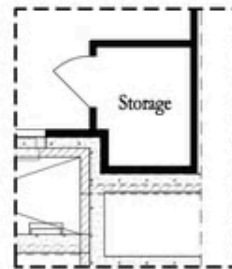


*Opt. Linear Fireplace*

### Main Level Options



*Opt. Full Bath*



*Storage When  
Dropped Foyer Above*

### Terrace Level Options

Want to Know More  
About This Home?

CONTACT OUR COMMUNITY SALES MANAGER  
Call Us @ 678.591.1930