



PRICED AT
\$562,400

 1837 Sq Ft

 2 Beds

 3.5 Baths

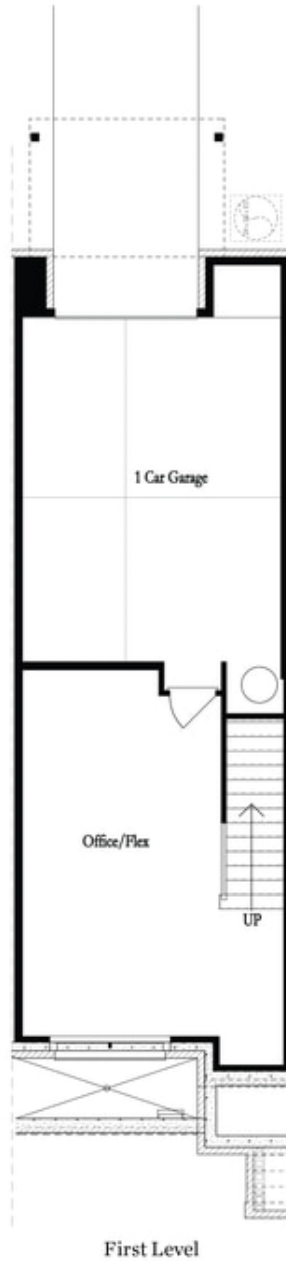
 1 Car Garage

 3.0 Story

Unbeatable Alpharetta location! Just minutes away from numerous dining options, retail space, trails, & more! 0.2 miles from North Point, 0.7 miles from the Big Creek Greenway entrance, 1.9 miles from Downtown Alpharetta, 2 miles from Avalon, & direct entrance to the future Alpha Loop Extension. **UNDER CONSTRUCTION** ~ 2 Bed / 3.5 Bath / Media Room on Terrace Level w/ Fenced in Front Yard! This desirable 3-story floor plan offers entry on the main level with open concept living. Gourmet Kitchen with sought-after, modern features such as Calacatta Sierra MSI Quartz Countertops, Cabinets w/ soft close doors & under cabinet lighting, GE Stainless Steel Appliances, & more! Kitchen overlooks open & spacious Dining & Living Room. Large deck located off the Living Room. Owner's Suite with private bath includes dual vanities, large walk-in closet, and shower. Stacked laundry located in the upper level hallway along with the secondary bedroom and full bath. Terrace level room perfect for an office or entertainment space includes full bath. 1 car garage with extra storage space as well as a one car driveway.

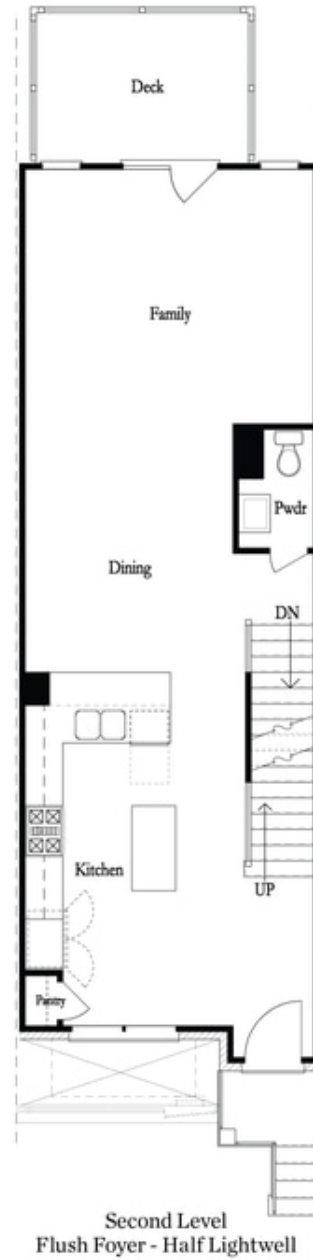
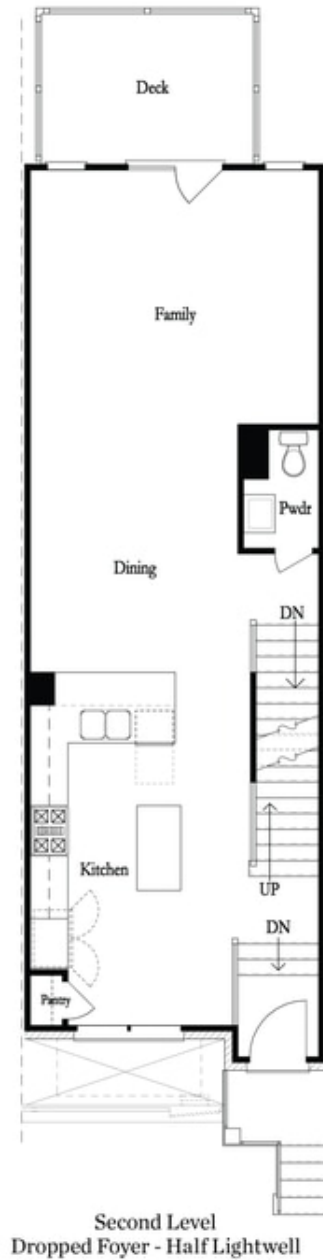
**Want to Know More
About This Home?**

CONTACT OUR COMMUNITY SALES MANAGER
Call Us @ 678.591.1930



**Want to Know More
About This Home?**

CONTACT OUR COMMUNITY SALES MANAGER
Call Us @ 678.591.1930



**Want to Know More
 About This Home?**

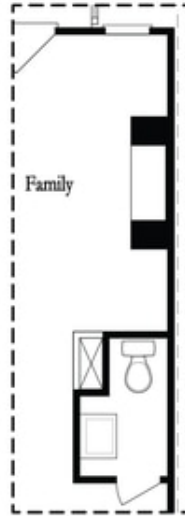
CONTACT OUR COMMUNITY SALES MANAGER
 Call Us @ 678.591.1930



Third Level

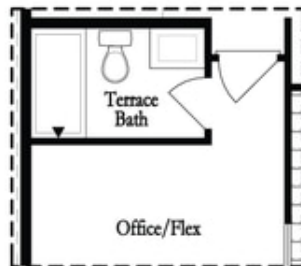
**Want to Know More
About This Home?**

CONTACT OUR COMMUNITY SALES MANAGER
Call Us @ 678.591.1930

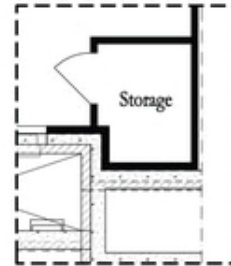


Opt. Linear Fireplace

Main Level Options



Opt. Full Bath



*Storage When
Dropped Foyer Above*

Terrace Level Options

**Want to Know More
About This Home?**

CONTACT OUR COMMUNITY SALES MANAGER
Call Us @ 678.591.1930