



PRICED AT  
**\$633,730**

 **2163 Sq Ft**

 **3 Beds**

 **3.5 Baths**

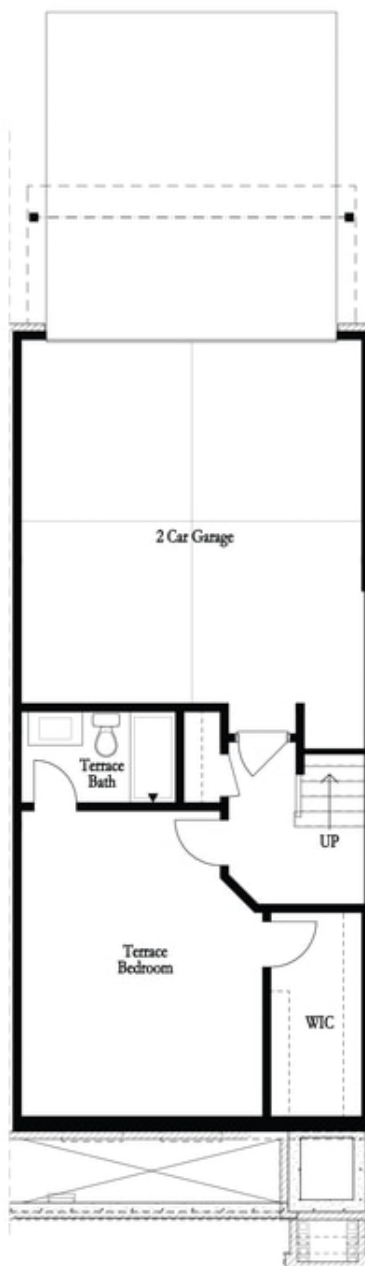
 **2 Car Garage**

 **3.0 Story**

Your beautiful, New Construction Townhome only 1.5 mile from Avalon, DT Alpharetta & only .2 miles to North Point Mall. **DESIGNER HOME!** Park in **OVERSIZED 2 Car Garage** on terrace level featuring Tankless Hot Water Heater, Electric Car Outlet + driveway long enough to park 2 additional cars. Terrace Level offers **HUGE Bedroom, Walk In Closet & Full Bath!** The Brownstone Collection provides main level access through front of home. Pets welcomed to enjoy fenced in front courtyard - Maintained by HOA - while you prep morning coffee in the kitchen! Our Bright & Open Concept Main Level showcases 9 ft ceilings, 6 ft energy efficient windows w/ powder room tucked in rear of home with **HUGE REAR DECK** facing West! Enjoy **GE Stainless Steel Appliances** including **GAS Cooktop, oven, hood vent, microwave & dishwasher** all built into **Full WHITE Cabinet Overlay w/ soft close doors, undercabinet lightings & Calacatta Ultra Quartz Countertops & Island!** Kitchen looks onto open dining & living room! Upper-level features huge Master Suite w/ **HARDWOODS, Trey Ceilings + MASSIVE Walk in Closet + Master Bath** includes dual vanities w/ white Quartz countertops, frameless Shower featuring 4 x 16 subway tile up the wall! Bedroom 2 ...

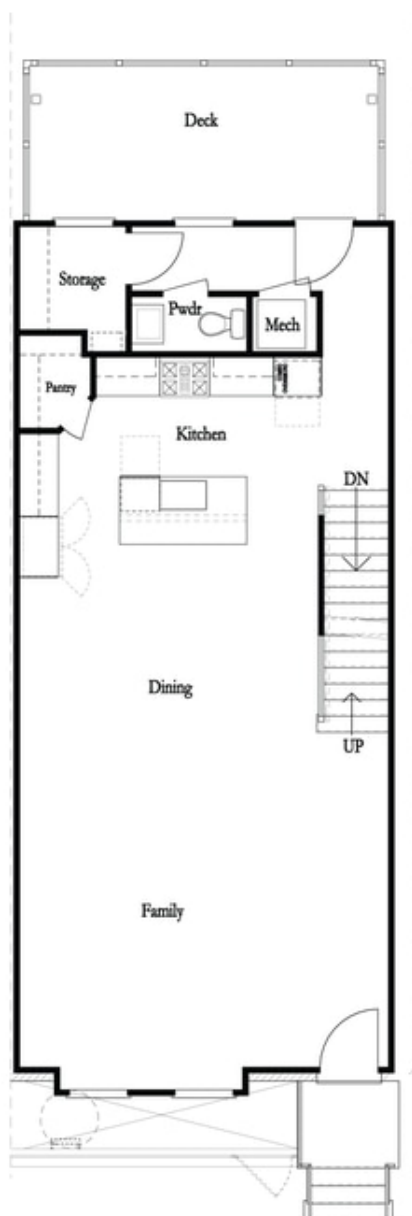
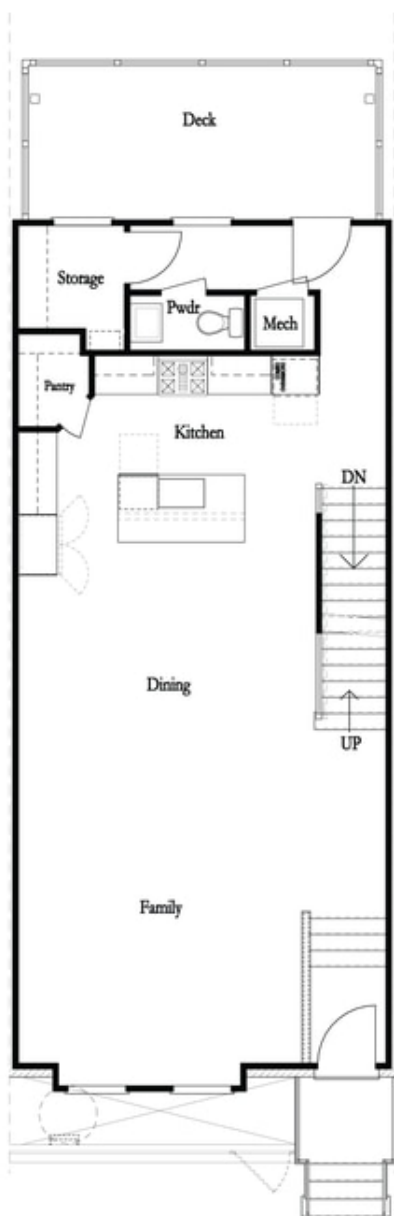
**Want to Know More  
About This Home?**

CONTACT OUR COMMUNITY SALES MANAGER  
Call Us @ (678) 591-1930



Want to Know More  
About This Home?

CONTACT OUR COMMUNITY SALES MANAGER  
Call Us @ (678) 591-1930



Want to Know More  
About This Home?

CONTACT OUR COMMUNITY SALES MANAGER  
Call Us @ (678) 591-1930



Want to Know More  
About This Home?

CONTACT OUR COMMUNITY SALES MANAGER  
Call Us @ (678) 591-1930

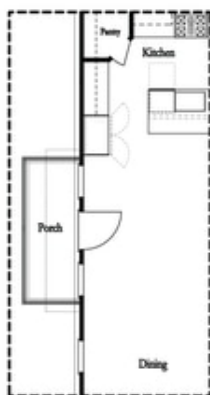


*Left End  
Opt. Sprinkler Room*



*Right End  
Opt. Sprinkler Room*

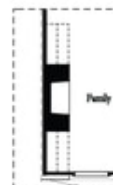
#### Terrace Level Options



*Optional Side Porch  
\*End Unit Only*



*Opt. Sunroom*



*Opt. 36\" Fireplaces*



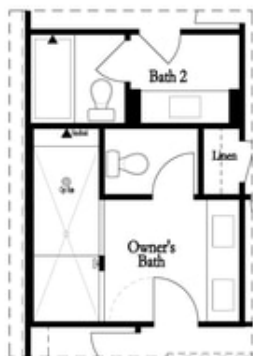
*Opt. Linear Fireplaces*

#### Main Level Options

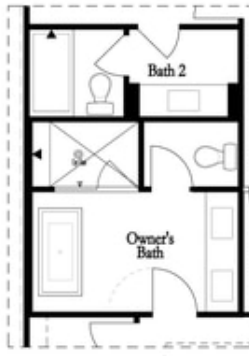
**Want to Know More  
About This Home?**

CONTACT OUR COMMUNITY SALES MANAGER  
Call Us @ (678) 591-1930

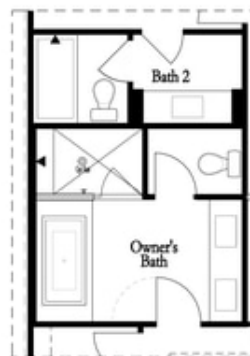
### Options



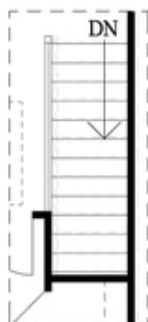
Opt. Walk-Through  
Shower



Opt. Freestanding  
Tub/Shower Combo



Opt. Decked  
Tub/Shower Combo



Opt. Open Rail

### Third Floor Options

Want to Know More  
About This Home?

CONTACT OUR COMMUNITY SALES MANAGER  
Call Us @ (678) 591-1930