



PRICED AT  
**\$566,690**

 **1837 Sq Ft**

 **2 Beds**

 **3.5 Baths**

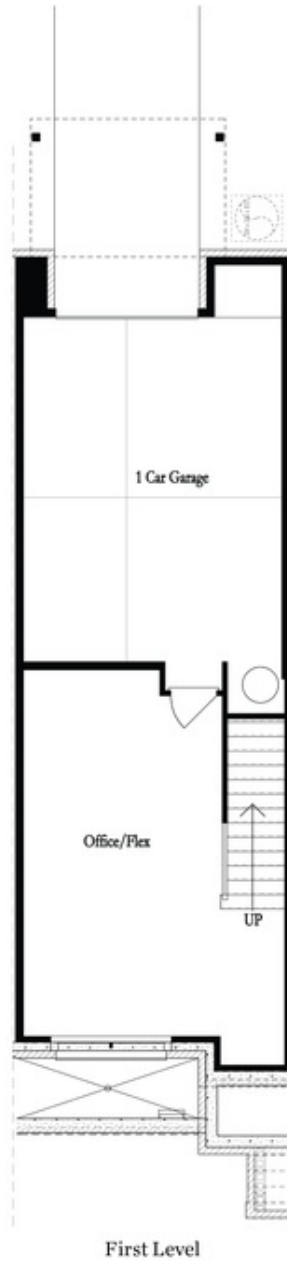
 **1 Car Garage**

 **3.0 Story**

**Unbeatable Alpharetta location! Just minutes away from numerous dining options, retail space, trails, & more! 0.2 miles from North Point, 0.7 miles from the Big Creek Greenway entrance, 1.9 miles from Downtown Alpharetta, 2 miles from Avalon, & direct entrance to the future Alpha Loop Extension. ~ 2 Bed / 3.5 Bath & Media Room on Terrace Level. This 3-story floor plan offers entry on the main level w/ a sought after open concept & HOA maintained fenced in front yard! The Gourmet, L-Shaped Kitchen includes sleek, modern features such as Soapstone Mist MSI Quartz Countertops, White Cabinets w/ soft close doors & under cabinet lighting, GE Stainless Steel Appliances, & more! GE STAINLESS STEEL REFRIGERATOR & BLINDS INCLUDED. Kitchen overlooks spacious Dining & Living Room. Large deck located off the Living Room. Owner's Suite offers 10 ft tray ceilings & private bath which includes dual vanities, large walk-in closet, and shower. Stacked laundry located in the upper level hallway along with the secondary bedroom and full bath. Terrace level room perfect for an office or entertainment space includes full bath. 1 car garage with extra storage space as well as a one car driveway.**

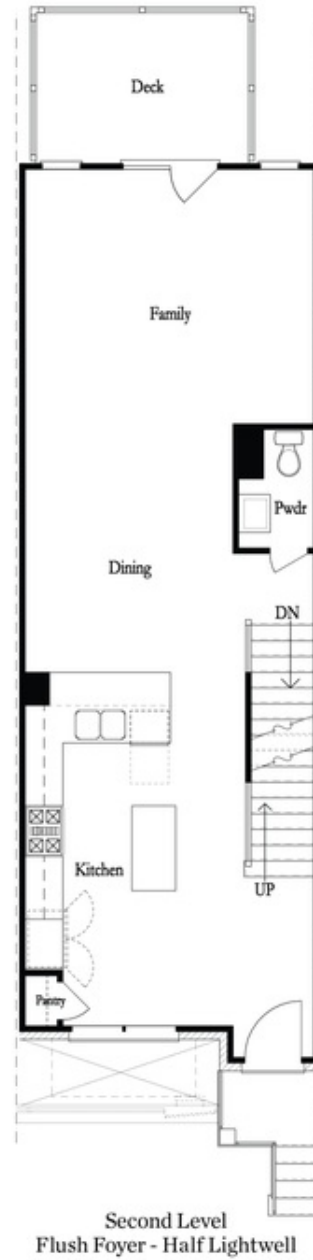
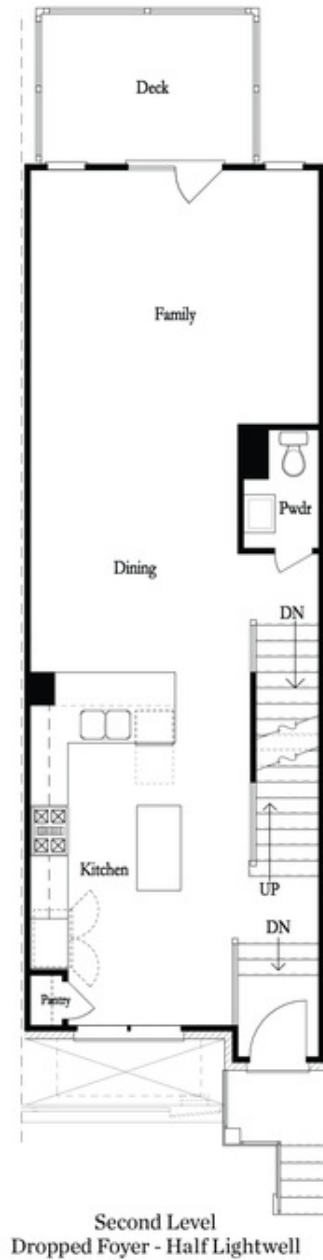
**Want to Know More  
About This Home?**

**CONTACT OUR COMMUNITY SALES MANAGER**  
**Call Us @ 678.591.1930**



Want to Know More  
About This Home?

CONTACT OUR COMMUNITY SALES MANAGER  
Call Us @ 678.591.1930



Want to Know More  
 About This Home?

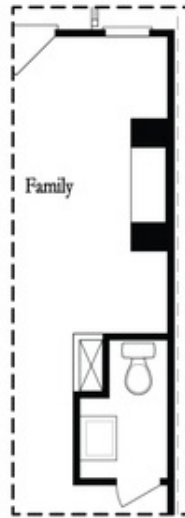
CONTACT OUR COMMUNITY SALES MANAGER  
 Call Us @ 678.591.1930



Third Level

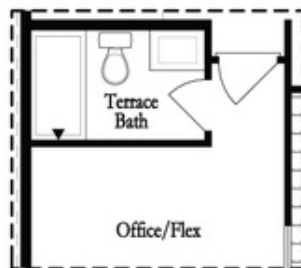
Want to Know More  
About This Home?

CONTACT OUR COMMUNITY SALES MANAGER  
Call Us @ 678.591.1930

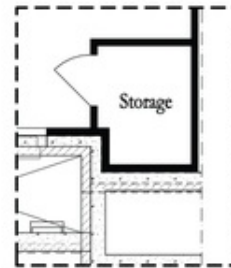


*Opt. Linear Fireplace*

### Main Level Options



*Opt. Full Bath*



*Storage When  
Dropped Foyer Above*

### Terrace Level Options

Want to Know More  
About This Home?

CONTACT OUR COMMUNITY SALES MANAGER  
Call Us @ 678.591.1930