



PRICED AT
\$710,540

 2268 Sq Ft

 3 Beds

 3.5 Baths

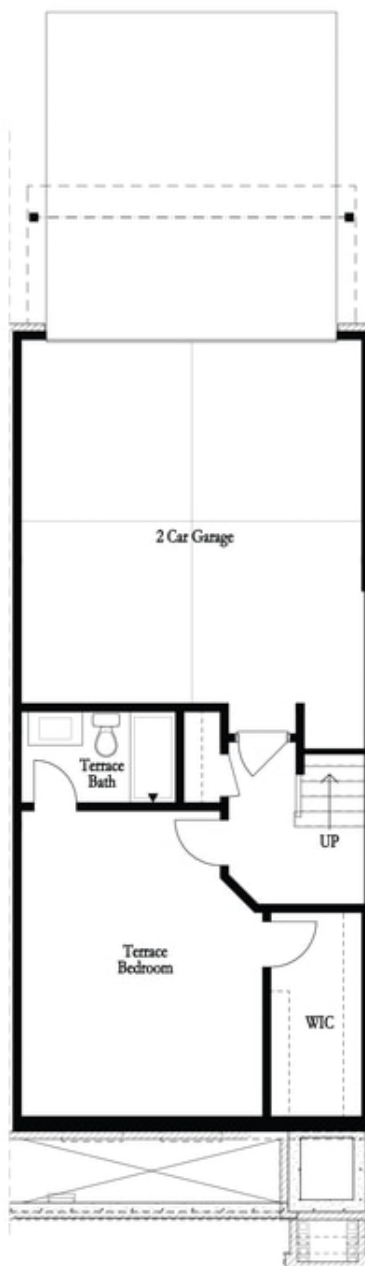
 2 Car Garage

 3.0 Story

~SUMMER SPECIAL INCENTIVE~ \$20K Towards Closing Costs and/or Financing Program with Preferred Lender + 50% off Builder Deposit for contracts written prior to December 2022! END UNIT - Featuring our newly upgraded Warm Stone Design Collection - This desirable 3 story townhome includes a private bedroom on the terrace level with full bath & spacious walk-in closet + entry on Main Level. Main Level offers a Gourmet Kitchen with sought-after, modern features such as Calacatta Alto MSI Quartz Countertops, 42" Upper Full Overlay Cabinets w/ soft close doors & under cabinet lighting, GE Stainless Steel Appliances, Walk-In Pantry, & more! Behind the Kitchen you will find a Sunroom, perfect for an office or separate dining space w/ entry to the deck + half bath, & two separate storage closets. Kitchen Island overlooks the open concept Dining & Living Room. Centered in the Living Room is a contemporary linear fireplace w/ wood mantel & stacked stone surround. Staircase leading from the Main Level to the Upper-Level features metal balusters, w/ Stained Oak handrail and Oak Treads! On the Upper-Level, you will find an oversized Owner's Suite with tray ceilings and large walk-in closet! Owner's Suite Bathroom includes dual vanities, linen closet, ...

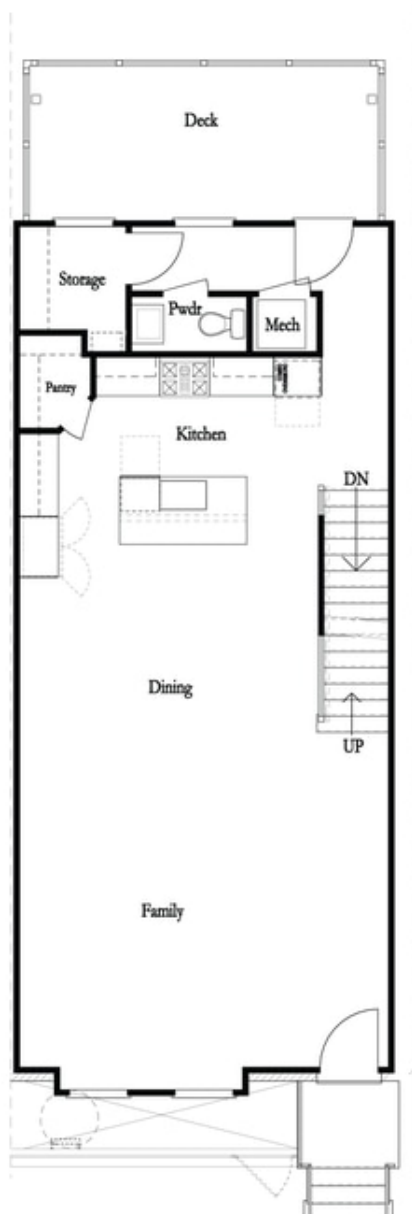
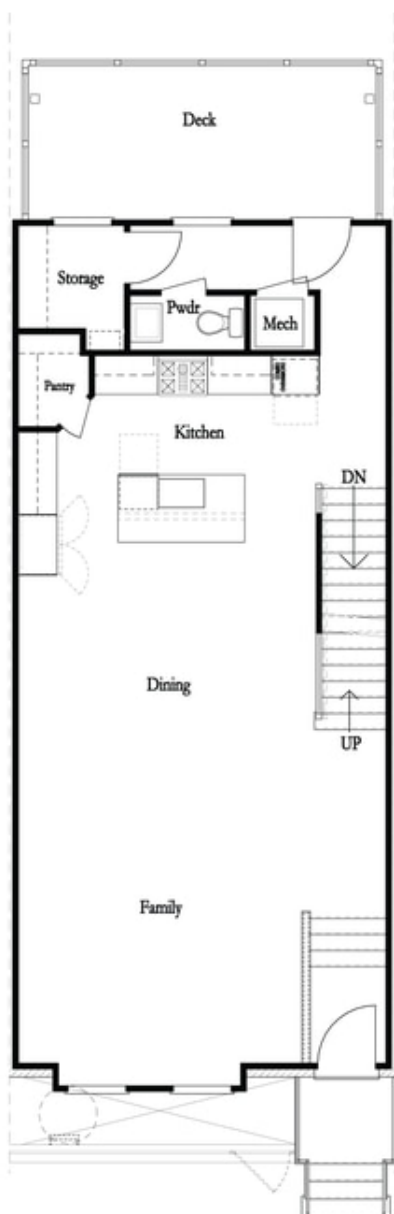
**Want to Know More
About This Home?**

CONTACT OUR COMMUNITY SALES MANAGER
Call Us @ (678) 591-1930



Want to Know More
About This Home?

CONTACT OUR COMMUNITY SALES MANAGER
Call Us @ (678) 591-1930



Want to Know More
About This Home?

CONTACT OUR COMMUNITY SALES MANAGER
Call Us @ (678) 591-1930



Want to Know More
About This Home?

CONTACT OUR COMMUNITY SALES MANAGER
Call Us @ (678) 591-1930

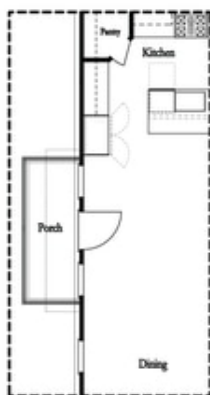


*Left End
Opt. Sprinkler Room*



*Right End
Opt. Sprinkler Room*

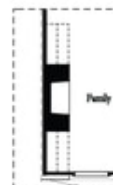
Terrace Level Options



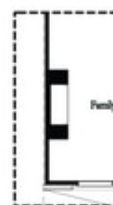
*Optional Side Porch
End Unit Only



Opt. Sunroom



Opt. 36\" Fireplaces



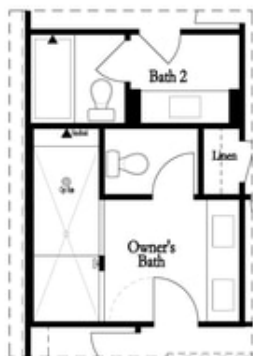
Opt. Linear Fireplace

Main Level Options

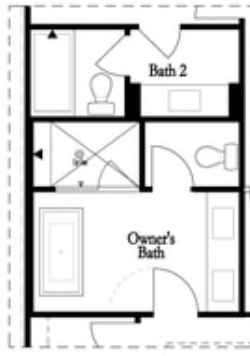
**Want to Know More
About This Home?**

CONTACT OUR COMMUNITY SALES MANAGER
Call Us @ (678) 591-1930

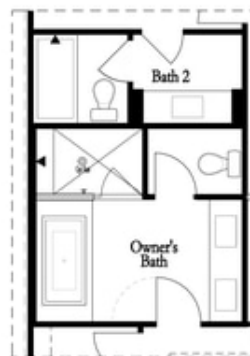
Options



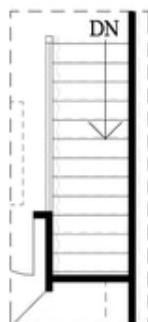
*Opt. Walk-Through
Shower*



*Opt. Freestanding
Tub/Shower Combo*



*Opt. Decked
Tub/Shower Combo*



Opt. Open Rail

Third Floor Options

**Want to Know More
About This Home?**

CONTACT OUR COMMUNITY SALES MANAGER
Call Us @ (678) 591-1930