



PRICED AT
\$574,400

 **1883 Sq Ft**

 **2 Beds**

 **3.5 Baths**

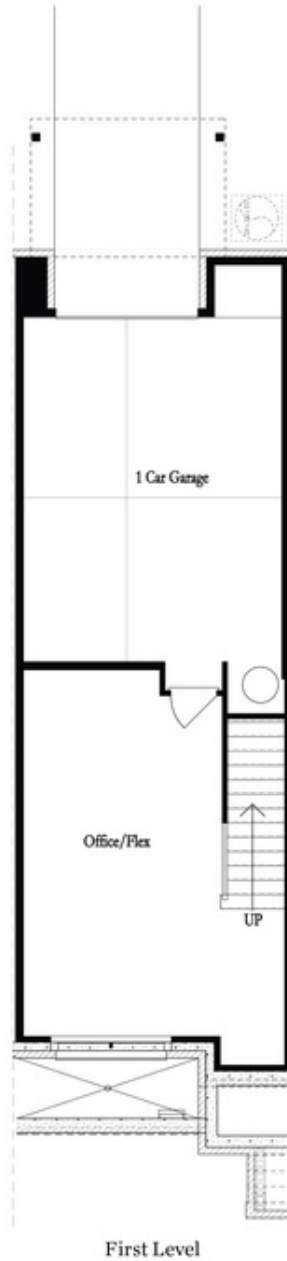
 **1 Car Garage**

 **3.0 Story**

HOME FOR HOLIDAYS...\$20,000 ANY WAY YOU WANT on contracts that can close by the end of December..Make this season unforgettable and beautiful with this charming Barnesley II floor plan featuring 2 Bedrooms and 3.5 Baths. A great combination of space utilization and design makes this unit very attractive to a younger couple or single nesters . This is a Halfway Basement unit with a Flex/ Media/ Office Room and a Full Bath perfect for study or entertainment . Going up from the garage you enter in an Open Concept Kitchen/Living Area with 2 Quartz Islands Countertops , 42" Cabinets Warm Wheat Collection , Crown Molding and top of the line GE Stainless Steel Appliances . Gas Cooktop , Range Hood , Electrical Oven , Built in Microwave and Dishwasher. With plenty of natural light in the Living Room and more coming from the adjacent outside Wooden Deck , this presents a wonderful outdoor/indoor experience. Going up you have the Primary Bedroom and the Guest Bedroom along with the Primary Baths and the GUEst one . 9ft.tall Ceilings through out with spaces Closets . One car garage with the option to park a second car on the Driveway , also numerous ...

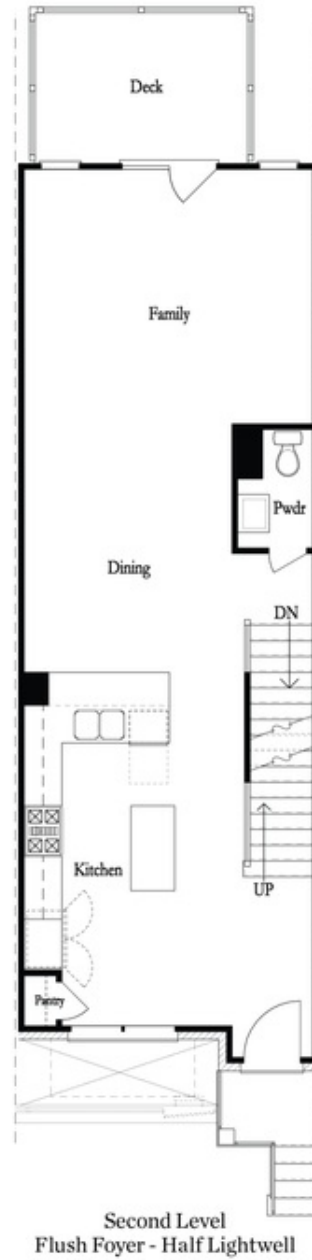
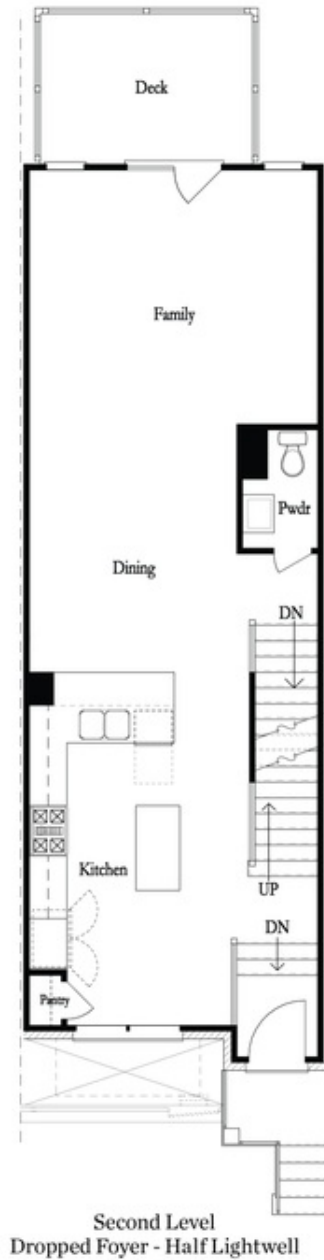
**Want to Know More
About This Home?**

**CONTACT OUR COMMUNITY SALES MANAGER
Call Us @ 678.591.1930**



Want to Know More
About This Home?

CONTACT OUR COMMUNITY SALES MANAGER
Call Us @ 678.591.1930



Want to Know More
About This Home?

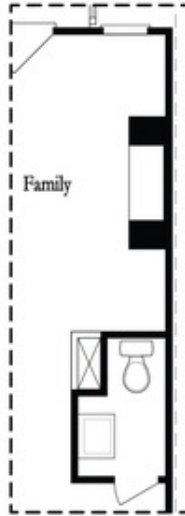
CONTACT OUR COMMUNITY SALES MANAGER
Call Us @ 678.591.1930



Third Level

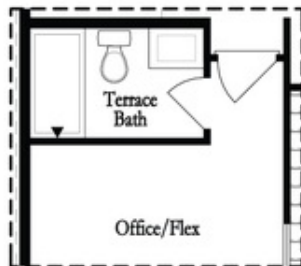
Want to Know More
About This Home?

CONTACT OUR COMMUNITY SALES MANAGER
Call Us @ 678.591.1930

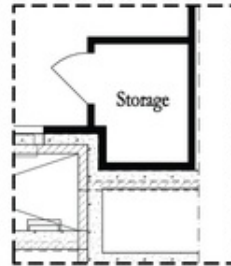


Opt. Linear Fireplace

Main Level Options



Opt. Full Bath



*Storage When
Dropped Foyer Above*

Terrace Level Options

Want to Know More
About This Home?

CONTACT OUR COMMUNITY SALES MANAGER
Call Us @ 678.591.1930