



PRICED AT  
**\$578,060**

 1883 Sq Ft

 2 Beds

 3.5 Baths

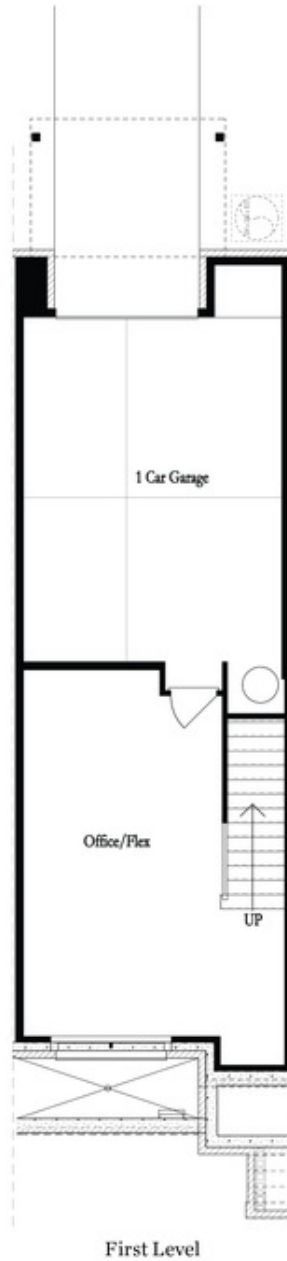
 1 Car Garage

 3.0 Story

**New Year New Home New You! Ask about our current incentive **\*\*\$15,000 USE ANYWAY \*\* ON ALL THE CONTRACTS WRITTEN BY THE END OF FEBRUARY!** Enjoy the NEW YEAR great with this beautiful and splendid floor plan- Barnesley II. This plan features 2 Bedrooms and 3.5 Bathrooms on 3 Levels , with a lot of possibilities. As you enter your rear garage you enter on the terrace or partial basement, you walk into a space with an Ensuite Bedroom with full Bath and a generous Closet . Going upstairs you enter a spacious and open floorplan with Kitchen with 2 islands that flow into your dining area and family rooms. 9 ft ceiling heights and crown molding on main living level with large windows. Designer kitchen has 42" Cabinets , GE top of the line Stainless Steel Appliances , Gas Cooktop , Electrical Oven , Dishwasher , Range Hood , and Built in Microwave. The Kitchen design is our outstanding Warm Slate Collection with Quartz Countertops and Soft Closing Cabinets . The Living Room is spacious and leads to a Wooden Deck perfect for the outdoor evenings . On the 3rd Level you have 2 Bedrooms and 2 Full Baths . ...**

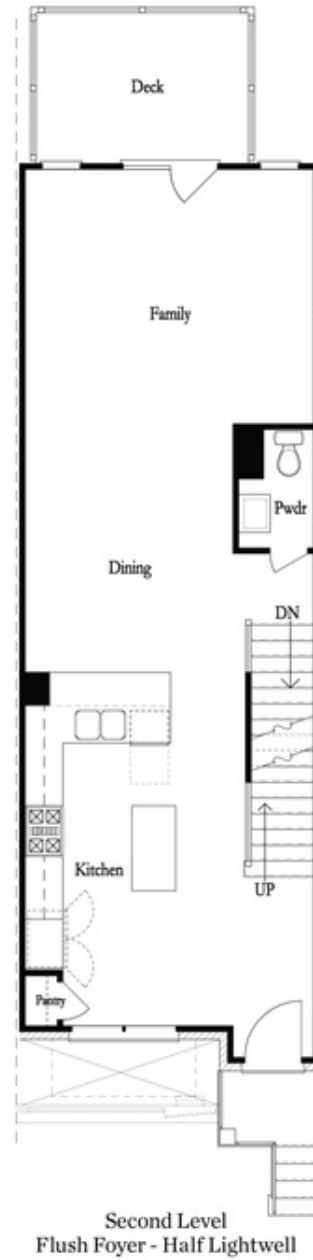
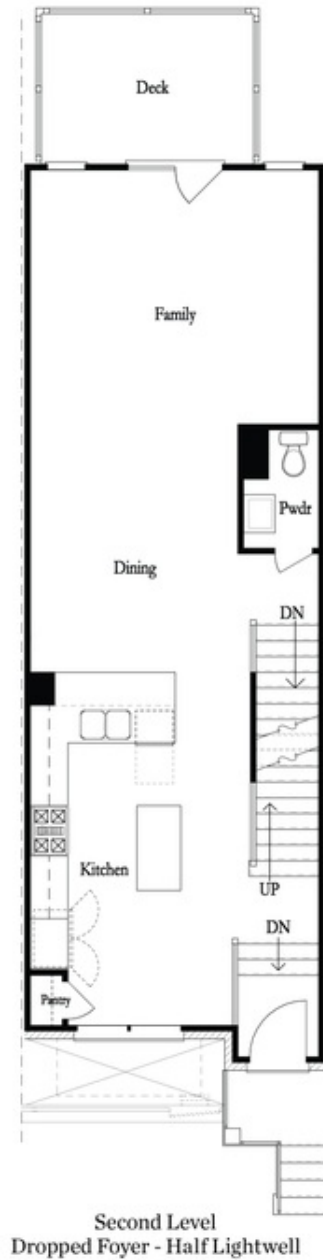
Want to Know More  
About This Home?

CONTACT OUR COMMUNITY SALES MANAGER  
Call Us @ 678.591.1930



Want to Know More  
About This Home?

CONTACT OUR COMMUNITY SALES MANAGER  
Call Us @ 678.591.1930



Want to Know More  
 About This Home?

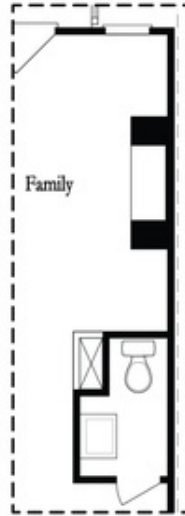
CONTACT OUR COMMUNITY SALES MANAGER  
 Call Us @ 678.591.1930



Third Level

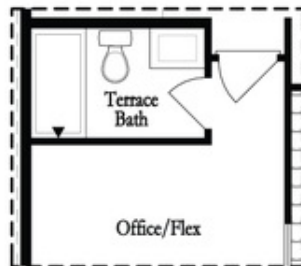
Want to Know More  
About This Home?

CONTACT OUR COMMUNITY SALES MANAGER  
Call Us @ 678.591.1930

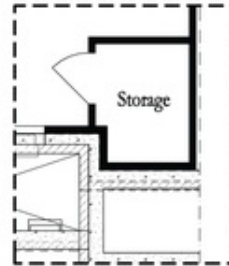


*Opt. Linear Fireplace*

### Main Level Options



*Opt. Full Bath*



*Storage When  
Dropped Foyer Above*

### Terrace Level Options

Want to Know More  
About This Home?

CONTACT OUR COMMUNITY SALES MANAGER  
Call Us @ 678.591.1930