



PRICED AT
\$574,400

 1883 Sq Ft

 2 Beds

 3.5 Baths

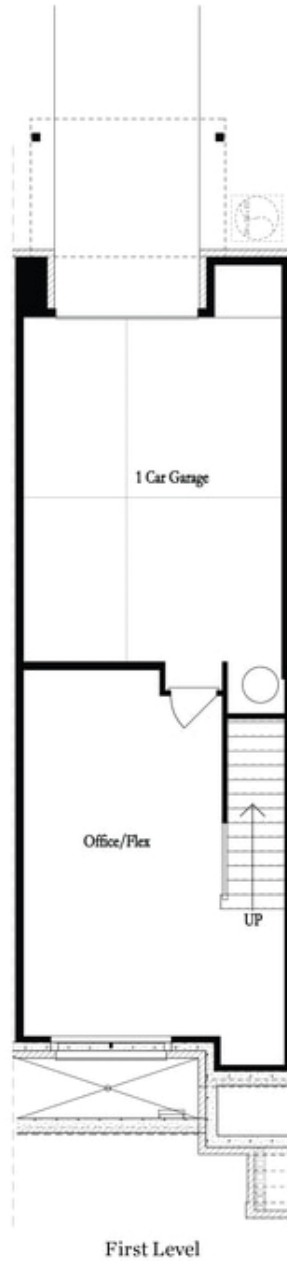
 1 Car Garage

 3.0 Story

SIZZLING SUMMER SAVINGS \$10,000 ANY WAY YOU WANT MUST CLOSE BY THE END OF JULY
Stunning Floor Plan Barnesley II ... Low Maintenance Living at it's best w/ HOA Maintained Exteriors, Fenced-In Courtyard, & more! Just minutes away from numerous dining options, retail space, trails, & more! 2 Bed / 3.5 Bath + Media Room w/ full bath on Terrace Level. Homesite 40 will feature our Cool Stone Design Collection, ... This beautiful 3-story floor plan offers entry into an open concept main level. The L-Shaped Kitchen includes upgraded features such as MSI Quartz Countertops, 42" Full Overlay Cabinets w/ soft close doors & under cabinet lighting, GE Stainless Steel Appliances, & more! Kitchen overlooks spacious Dining & Living Room. Large deck located off the Living Room creates the perfect indoor/outdoor entertainment space. Owner's Suite offers 9 ft tray ceilings & private bath which includes dual vanity w/ Quartz countertop, large walk-in closet, and shower. Stacked laundry located in the upper level hallway along with the secondary bedroom and full bath. Terrace level room perfect for an office or entertainment space includes full bath. 1 car garage with extra storage space as well as a one car driveway. At ...

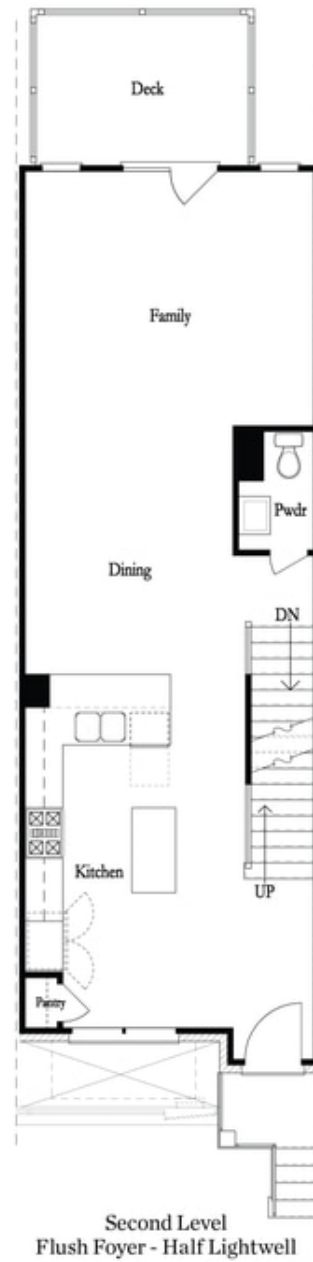
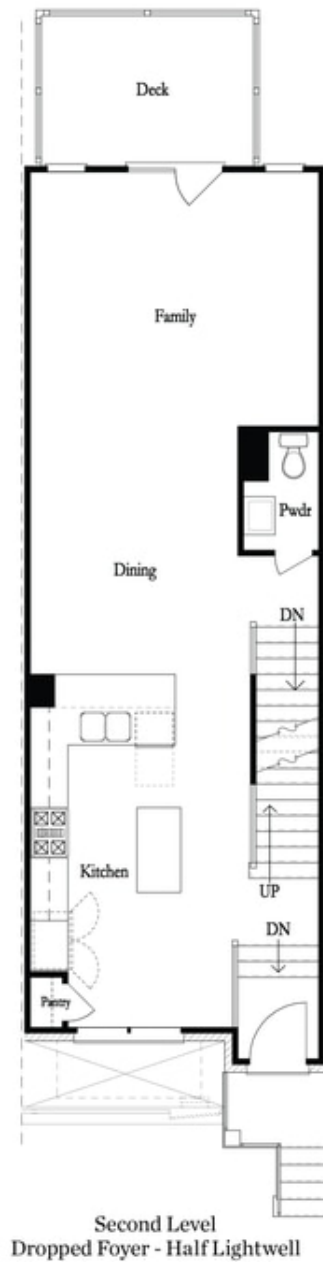
**Want to Know More
About This Home?**

CONTACT OUR COMMUNITY SALES MANAGER
Call Us @ 678.591.1930



**Want to Know More
About This Home?**

CONTACT OUR COMMUNITY SALES MANAGER
Call Us @ 678.591.1930



**Want to Know More
About This Home?**

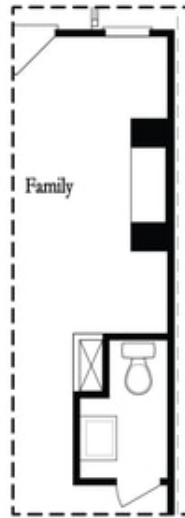
CONTACT OUR COMMUNITY SALES MANAGER
Call Us @ 678.591.1930



Third Level

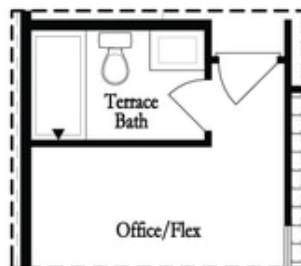
**Want to Know More
About This Home?**

CONTACT OUR COMMUNITY SALES MANAGER
Call Us @ 678.591.1930

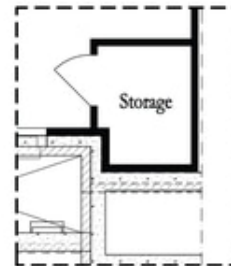


Opt. Linear Fireplace

Main Level Options



Opt. Full Bath



*Storage When
Dropped Foyer Above*

Terrace Level Options

**Want to Know More
About This Home?**

CONTACT OUR COMMUNITY SALES MANAGER
Call Us @ 678.591.1930