



PRICED AT  
**\$738,200**

 **2280 Sq Ft**

 **3 Beds**

 **3.5 Baths**

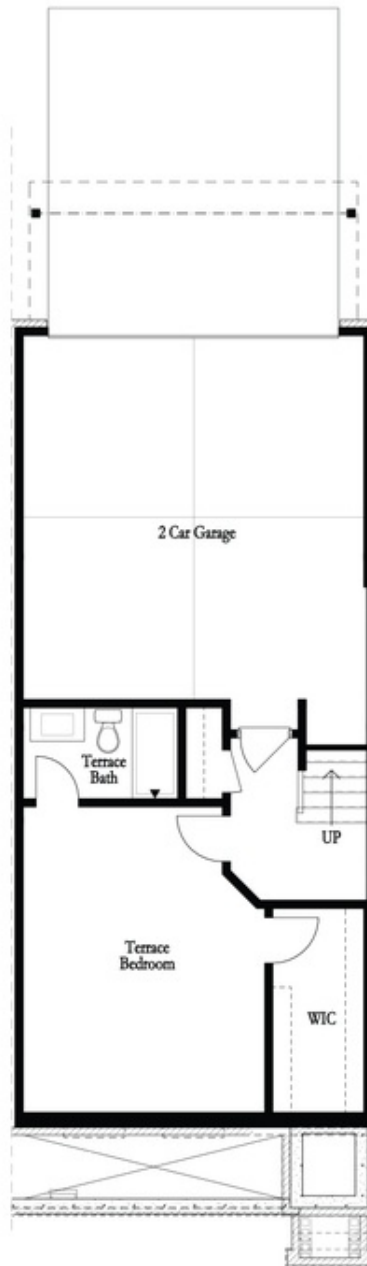
 **2 Car Garage**

 **3.0 Story**

**FALL INTO SAVINGS Savings \$ 10,000 ANY WAY YOU WANT....Come and take a look at this 3 Story END UNIT award winning Benton II Floor Plan , featuring 3 Bedrooms and 3.5 Bathrooms with numerous Side Windows , natural light , privacy and Side Balcony . One of the Bedrooms is in the Daylight Basement with a full Bathroom and generous Closet , with a private entry from the Garage . Going up the stairs you go into an Open Concept Living Room / Kitchen design with our award winning Warm Lined Package , Quartz Countertops , 42" White Cabinets with Crown Molding , and GE top of the line Appliances , such a Gas Cooktop, Dishwasher , Electrical Oven , Range Hood , and Built in Microwave . The flooring has been upgrade it to Whole House Hardwood Floors replacing the carpets from bedrooms. A nice cozy Ventless Fireplace in the Living Room for the Winter cold evenings makes this space charming and inviting.Behind the Kitchen wall is a Sunroom perfect for your afternoon lazy days , a space where you can read a book or enjoy a glass of wine . From the Sunroom / Office opens to ...**

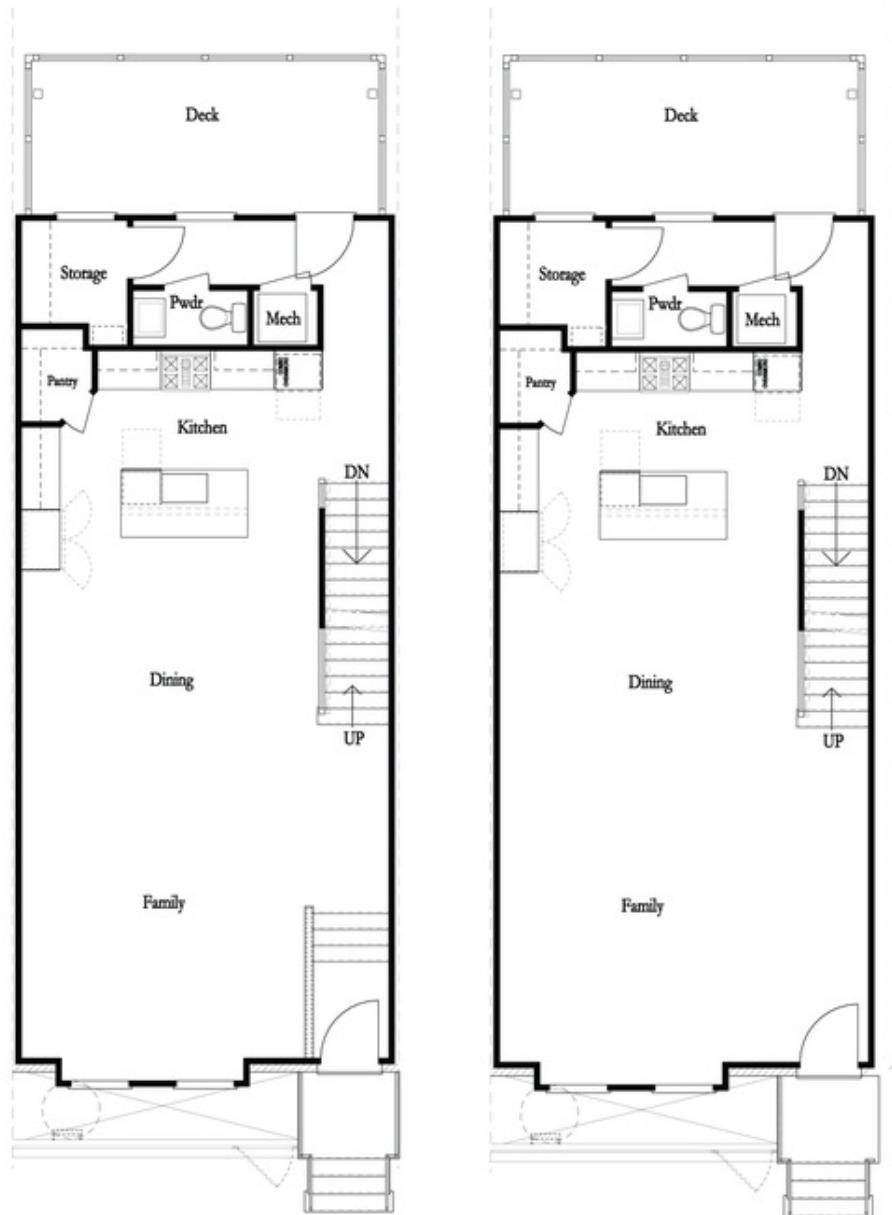
**Want to Know More  
About This Home?**

**CONTACT OUR COMMUNITY SALES MANAGER**  
**Call Us @ 678.591.1930**



Want to Know More  
About This Home?

CONTACT OUR COMMUNITY SALES MANAGER  
Call Us @ 678.591.1930



Want to Know More  
About This Home?

CONTACT OUR COMMUNITY SALES MANAGER  
Call Us @ 678.591.1930



Want to Know More  
About This Home?

CONTACT OUR COMMUNITY SALES MANAGER  
Call Us @ 678.591.1930

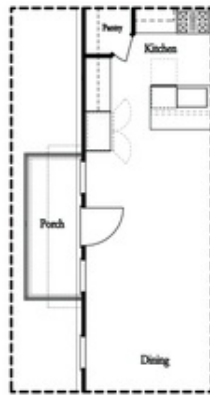


*Left End  
 Opt. Sprinkler Room*



*Right End  
 Opt. Sprinkler Room*

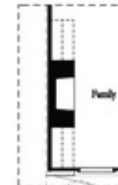
Terrace Level Options



*Optional Side Porch  
 \*End Unit Only*



*Opt. Sunroom*



*Opt. 36" Fireplace*



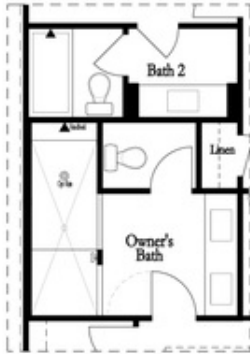
*Opt. Linear Fireplace*

Main Level Options

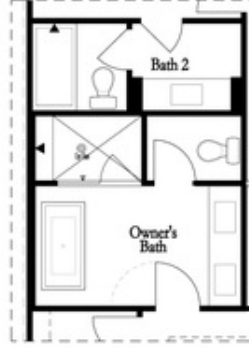
Want to Know More  
 About This Home?

CONTACT OUR COMMUNITY SALES MANAGER  
 Call Us @ 678.591.1930

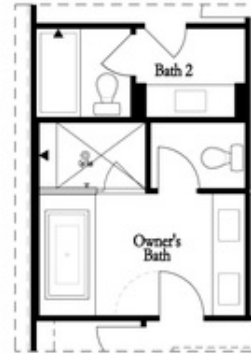
Options



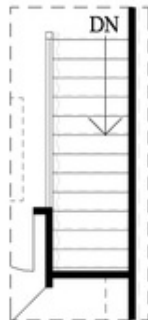
Opt. Walk-Through  
Shower



Opt. Freestanding  
Tub/Shower Combo



Opt. Decked  
Tub/Shower Combo



Opt. Open Rail

Third Floor Options

Want to Know More  
About This Home?

CONTACT OUR COMMUNITY SALES MANAGER  
Call Us @ 678.591.1930