



PRICED AT  
**\$765,500**

 2167 Sq Ft

 3 Beds

 2.5 Baths

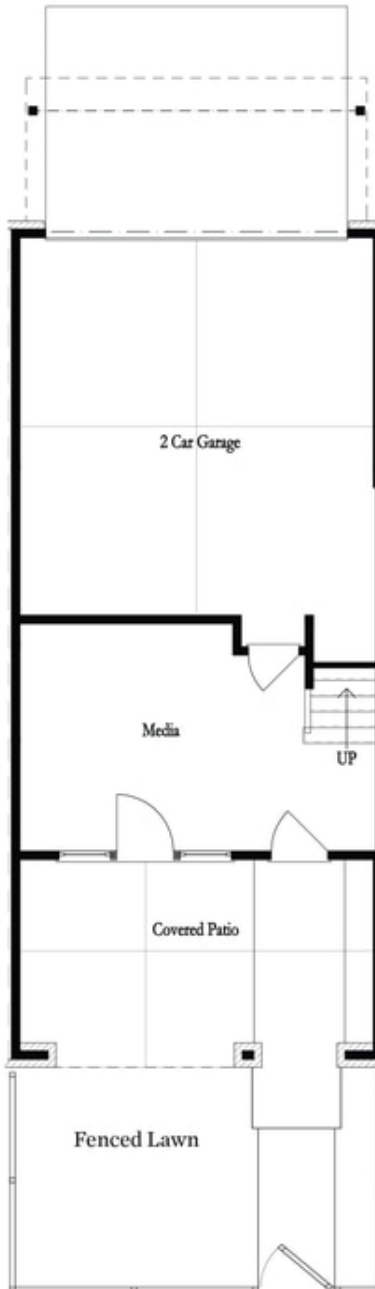
 1 Car Garage

 3.0 Story

**ELEVATE YOUR LIFESTYLE ...Come and see this Award Winning Floor Plan - Benton I END UNIT in Ecco Park Alpharetta. This unit features 3 Bedrooms and 2.5 Baths and 3 outdoor areas for entertaining. The Front Entry is fenced and includes an irrigation system. The covered Terrace patio with a Front Door into the Office / Media Room is perfect for entertaining. The slider door from the media room offers an extension of the outdoor experience. Going up you will be pleasantly surprised to see an Open Concept Kitchen and Family Room with numerous windows and a Side Balcony. 42" Cabinets with Calacatta Sierra Quartz Countertops, Tile Backsplash, and top of the line GE Stainless Steel Appliances - Dishwasher, Gas Cooktop, Built In Microwave, Electric Convection Oven, and Range Hood. The large kitchen island overlooks the dining area and the family room which has a beautiful Linear FP with stacked white quartzite. Behind the Kitchen Wall nicely "hidden " is a Sunroom and the Laundry Room, along with the Powder Room and a Closet. The Sun Room has a door leading to one of the decks. As you head upstairs, you find the Primary Bedroom with Tray Ceilings and also ...**

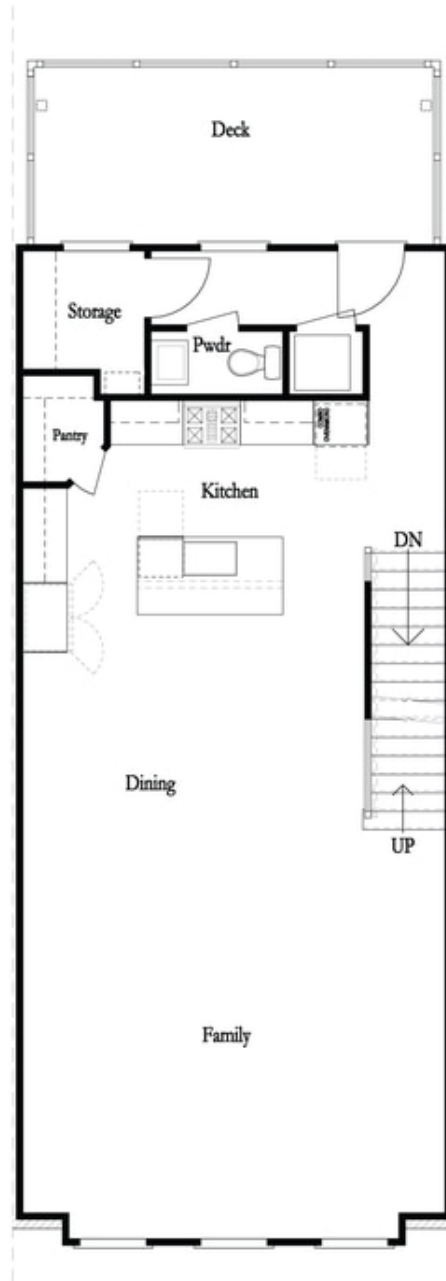
**Want to Know More  
About This Home?**

**CONTACT OUR COMMUNITY SALES MANAGER  
Call Us @ 678.591.1930**



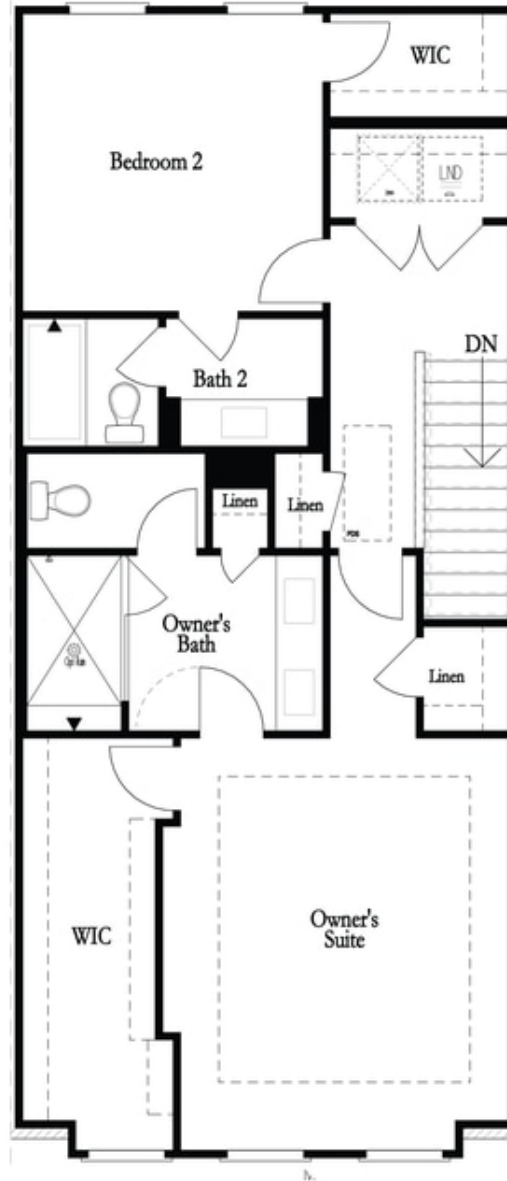
Want to Know More  
About This Home?

CONTACT OUR COMMUNITY SALES MANAGER  
Call Us @ 678.591.1930



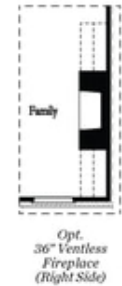
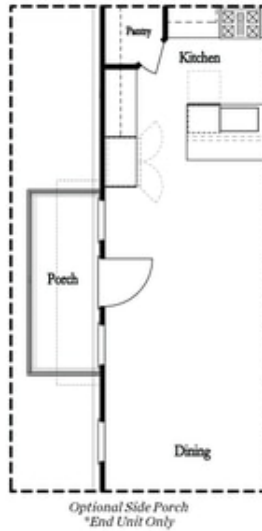
**Want to Know More  
About This Home?**

**CONTACT OUR COMMUNITY SALES MANAGER**  
Call Us @ 678.591.1930

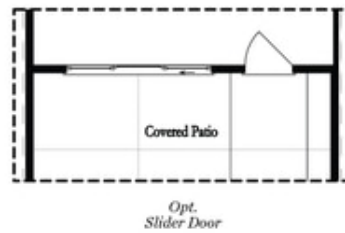
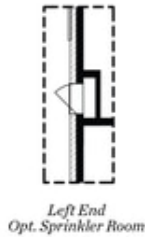


Want to Know More  
About This Home?

CONTACT OUR COMMUNITY SALES MANAGER  
Call Us @ 678.591.1930



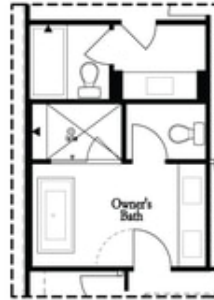
Main Level Options



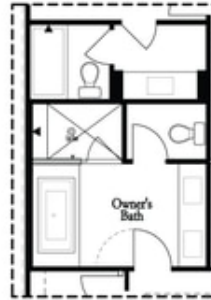
Terrace Level Options

Want to Know More  
About This Home?

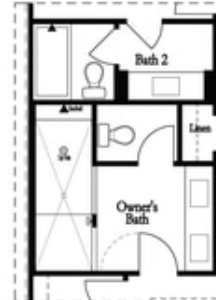
CONTACT OUR COMMUNITY SALES MANAGER  
Call Us @ 678.591.1930



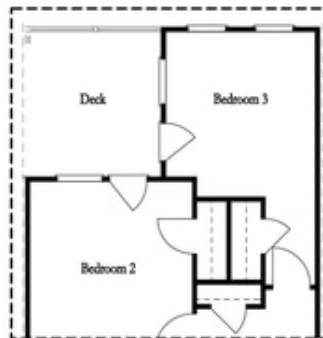
*Opt. Freestanding  
Tub/Shower Combo*



*Opt. Decked  
Tub/Shower Combo*



*Opt. Walk-Through Shower*



*Opt. Bedroom 3  
\*Only Available with Sunroom option  
\*Laundry Moved to Main Level w/ this Opt.*

Upper Level Options

Want to Know More  
About This Home?

CONTACT OUR COMMUNITY SALES MANAGER  
Call Us @ 678.591.1930