



PRICED AT  
**\$580,100**

 1694 Sq Ft

 2 Beds

 2.5 Baths

 1 Car Garage

 3.0 Story

**SPRING INTO A NEW HOME ...\$15,000 ANY WAY YOU WANT ON ALL CONTRACTS WRITTEN BY THE END OF APRIL .Elevate your life style in this modern, exquisite Barnesley I featuring 2 Bedrooms and 2.5 Baths. This Townhome offers a blend of luxury and functionality, perfect comfortable living. High end finishes, thoughtful design and outdoor space for entertainment, this home is ideal for buyers seeking style and convenience. Front Entry is private with a fenced Front Yard, Irrigation System and a beautiful Open, Covered Terrace. A Front Door along with a nice Sliding Glass Door, opens up to an Office/Media Room. Heading upstairs we enter in a Open Concept Kitchen Living Room with 2 islands. Kitchen is designed with a Cool Stone Design Package, Calacatta Quartz Countertops, 42" Stained Cabinets with Crown molding and Soft Closing Doors, GE Stainless Steel Appliances, Gas Cooktop, Built in Microwave, Dishwasher and Range Hood. Plenty of natural light with a wooden Deck makes the indoor / outdoor experience a pleasure. The family room features a linear fireplace with a quartzite surround.On the upper floor, we have the Owners Bedroom and the Secondary BR plus 2 full baths and a Washing / Dryer Closet. Location is ...**

Want to Know More  
About This Home?

CONTACT OUR COMMUNITY SALES MANAGER  
Call Us @ 678.591.1930

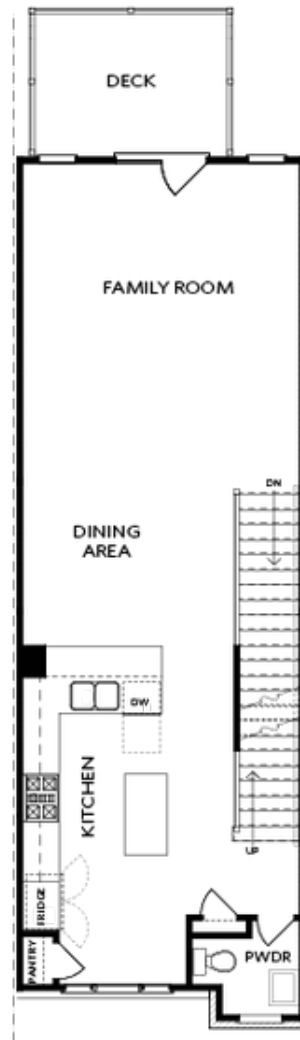


TERRACE

Elevation N

Want to Know More  
About This Home?

CONTACT OUR COMMUNITY SALES MANAGER  
Call Us @ 678.591.1930

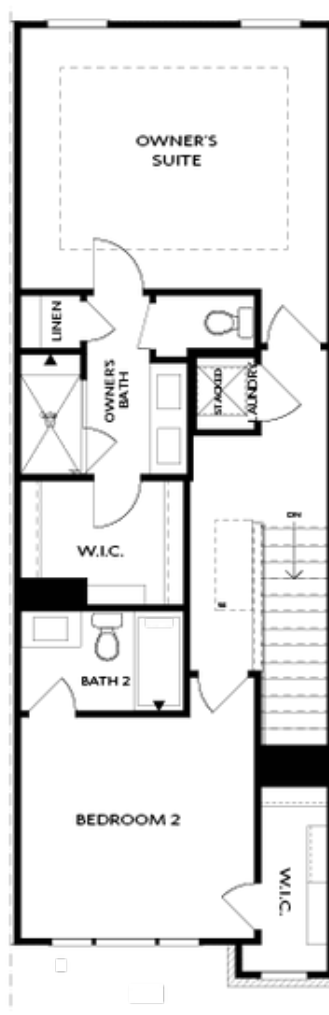


SECOND FLOOR

Elevation N

Want to Know More  
About This Home?

CONTACT OUR COMMUNITY SALES MANAGER  
Call Us @ 678.591.1930



THIRD FLOOR

Elevation N

Want to Know More  
About This Home?

CONTACT OUR COMMUNITY SALES MANAGER  
Call Us @ 678.591.1930



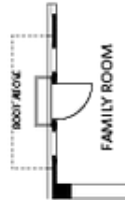
OPT Wet Bar



OPT Covered Deck



OPT Slider Door



OPT End Balcony



OPT Linear Fireplace

## OPTIONS

Want to Know More  
About This Home?

CONTACT OUR COMMUNITY SALES MANAGER  
Call Us @ 678.591.1930