

PRICED AT
\$580,100

 1694 Sq Ft

 2 Beds

 2.5 Baths

 1 Car Garage

 3.0 Story

YOUR HOME, YOUR WAY with \$15K - Customize your home buying journey - use it toward low rates, upgrades, appliances, closing costs & more. Ends August 31, 2025. Come visit us at Ecco Park in Alpharetta & Elevate your lifestyle in this modern, exquisite Barnesley I featuring 2 Bedrooms and 2.5 Baths. This Townhome offers a blend of luxury and functionality, perfect comfortable living. With high end finishes, thoughtful design and outdoor space for entertainment, this home is ideal for buyers seeking style and convenience. Front Entry is private with a fenced Front Yard, Irrigation System and a beautiful Open, Covered Terrace. Front Door entry along opens up to an Flex/Media Room with slider doors to the covered patio, creating the ultimate entertaining space. Take the stairs to the Open Concept Kitchen, Family Room & Dining Area. This gorgeous Kitchen is designed with our Cool Stone Design Package featuring Calacatta Sierra Quartz Countertops, 42" Upper Cabinets with Crown molding and Soft Closing Doors, GE Stainless Steel Appliances, Gas Cooktop, Built in Microwave, Dishwasher and Range Hood. Add some barstools at the L shaped island for casual dining and use the 2nd island for food prep. The family room features a ...

**Want to Know More
About This Home?**

CONTACT OUR COMMUNITY SALES MANAGER
Call Us @ 678.591.1930



TERRACE

Elevation N

Want to Know More
About This Home?

CONTACT OUR COMMUNITY SALES MANAGER
Call Us @ 678.591.1930

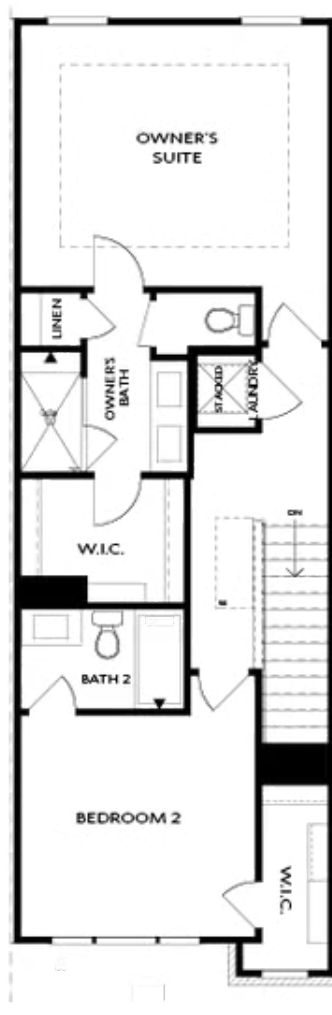


SECOND FLOOR

Elevation N

Want to Know More
About This Home?

CONTACT OUR COMMUNITY SALES MANAGER
Call Us @ 678.591.1930



THIRD FLOOR

Elevation N

Want to Know More
About This Home?

CONTACT OUR COMMUNITY SALES MANAGER
Call Us @ 678.591.1930



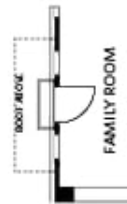
OPT Wet Bar



OPT Covered Deck



OPT Slider Door



OPT End Balcony



OPT Linear Fireplace

OPTIONS

Want to Know More
About This Home?

CONTACT OUR COMMUNITY SALES MANAGER
Call Us @ 678.591.1930