








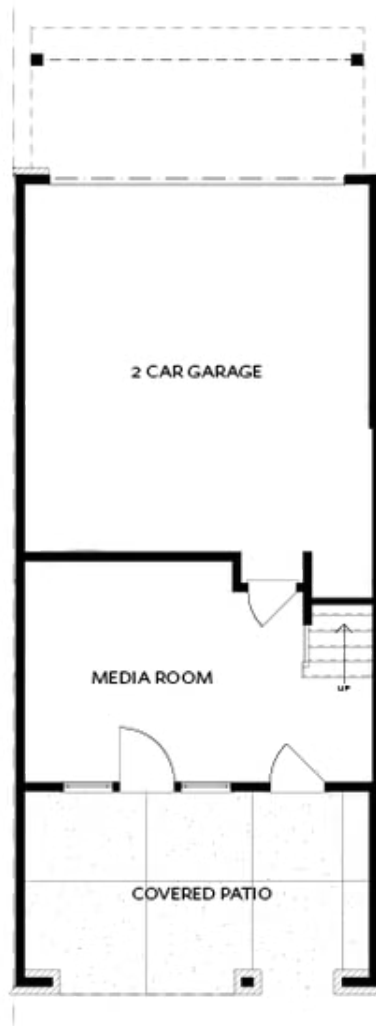
PRICED AT  
**\$663,900**

-  2145 Sq Ft
-  3 Beds
-  2.5 Baths
-  1 Car Garage
-  3.0 Story

FALL INTO SAVINGS with \$35K or 4.75% FIXED RATE when you use our Preferred Lender & close by end of November!! (\$35K has already been applied to this purchase price) Homesite 34 Benton plan is a MUST SEE with wooded view offering a ton of privacy. QUICK MOVE IN! The Design selections for this home are so beautiful - neutral tones that create a gorgeous backdrop for decorating. Terrace level Entry through fenced yard leads to a brick covered patio into MEDIA/FLEX room. The 9ft slider door in the media room allows you to extend your entertaining space to the patio. Explore the bright and spacious open concept Kitchen, Family Room, and Dining area as you reach the main level. This home is decorated with Warm Wheat Design Package which features 42" Kitchen Cabinets painted in a creamy vanilla and a stained kitchen island, Calacatta Ultra Quartz Countertops, and a beautiful 2x5 picket style Tile Backsplash. Additionally, the kitchen includes GE Stainless Steel appliances, under cabinet lighting and pendant lights above the island. A dining area is centrally located between the kitchen and family room. The family room features 3 large windows that overlook the eco pond and tree lined ...

**Want to Know More  
About This Home?**

CONTACT OUR COMMUNITY SALES MANAGER  
Call Us @ 678.591.1930

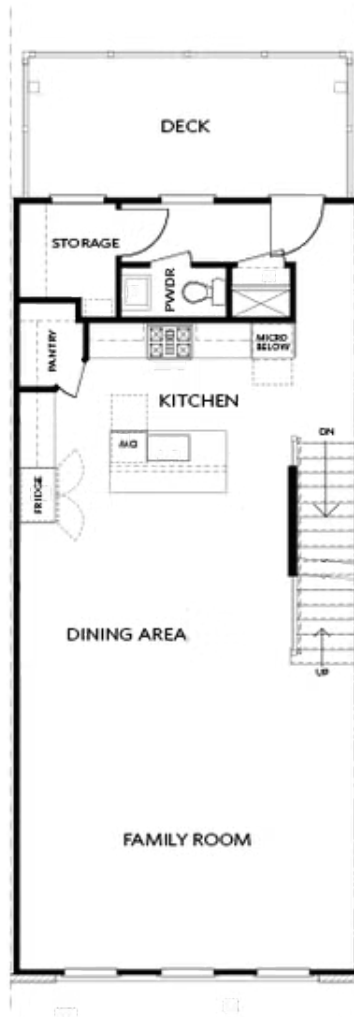


TERRACE

Elevation N

Want to Know More  
About This Home?

CONTACT OUR COMMUNITY SALES MANAGER  
Call Us @ 678.591.1930



SECOND FLOOR

Elevation N

Want to Know More  
About This Home?

CONTACT OUR COMMUNITY SALES MANAGER  
Call Us @ 678.591.1930

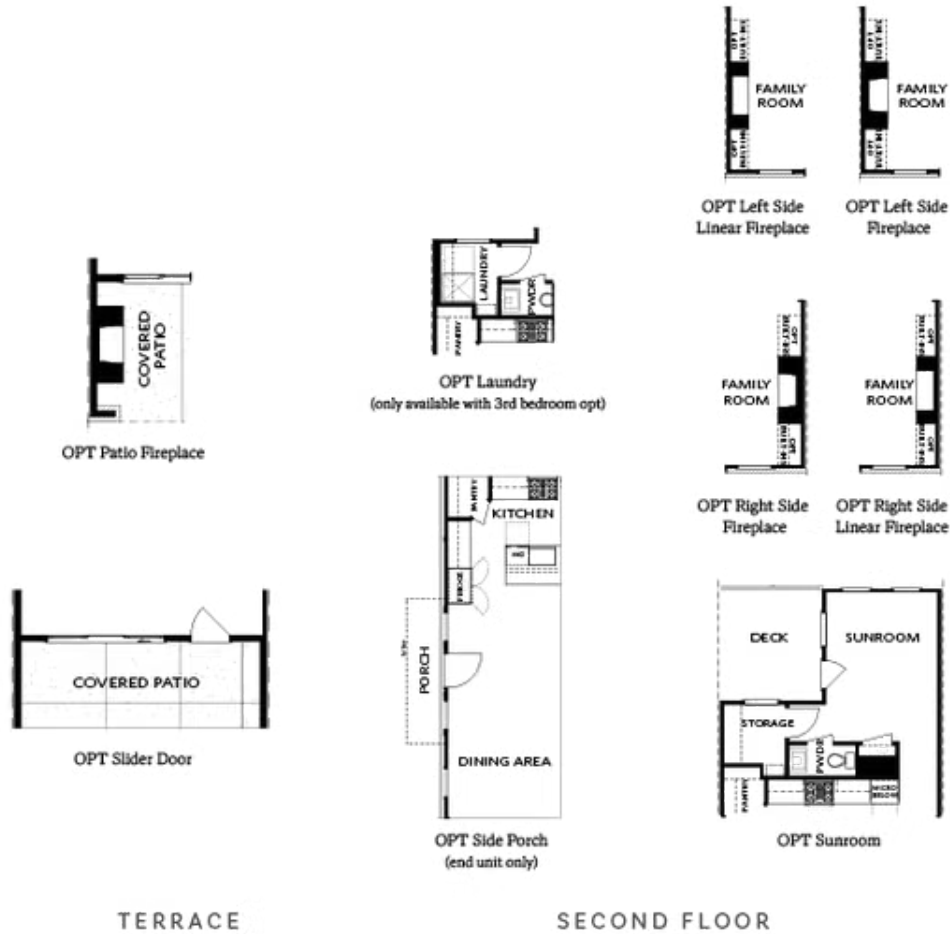


THIRD FLOOR

Elevation N

Want to Know More  
About This Home?

CONTACT OUR COMMUNITY SALES MANAGER  
Call Us @ 678.591.1930



#### OPTIONS

Want to Know More  
About This Home?

CONTACT OUR COMMUNITY SALES MANAGER  
Call Us @ 678.591.1930



OPT Open Rail



OPT Bedroom 3 - ONLY Available  
with Optional Sunroom



OPT Walk-Through Shower



OPT Freestanding  
Tub/Shower Combo



OPT Decked Tub/  
Shower Combo

## OPTIONS

Want to Know More  
About This Home?

CONTACT OUR COMMUNITY SALES MANAGER  
Call Us @ 678.591.1930