



PRICED AT
\$575,400

 1674 Sq Ft

 2 Beds

 2.5 Baths

 1 Car Garage

 3.0 Story

ELEVATE YOUR LIFESTYLE ...Come and see this beautiful cozy Barnesley I Floor Plan, featuring 2 Bedrooms and 2.5 Baths with beautiful views of trees and a small pond. The Front Entry is fenced and private with a covered Terrace patio, a nice sliding Glass Door and separate front door that opens up to a Flex/Media/Office Room. On the main level you find an Open Concept Family, Dining Area and Kitchen. The Kitchen has 42" upper full overlay cabinets with soft close doors & drawers and Crown Molding. The kitchen is also equipped with Calacatta Lavasa Quartz Countertops, Tile Backsplash, and top of the line GE Stainless Steel Appliances. At the 3rd level you will find the Primary Bedrooms with Tray Ceilings and a generous She/He Closet, a Primary Bathroom with Dual Vanity and a Walk In Shower. Second Bedroom is situated next to the Laundry Closet along with the Secondary Bath. One car Garage with a Charger Station, and extra storage space, and a driveway for an extra parking spot. Also, additional parking spaces you can find throughout the community. Walking distances to numerous restaurants and shopping centers, dental, medical, bank and fitness facilities. The community features a landscaped wooded ...

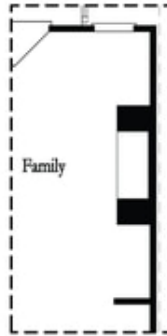
**Want to Know More
About This Home?**

CONTACT OUR COMMUNITY SALES MANAGER
Call Us @ 678.591.1930



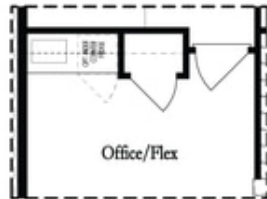
**Want to Know More
About This Home?**

CONTACT OUR COMMUNITY SALES MANAGER
Call Us @ 678.591.1930

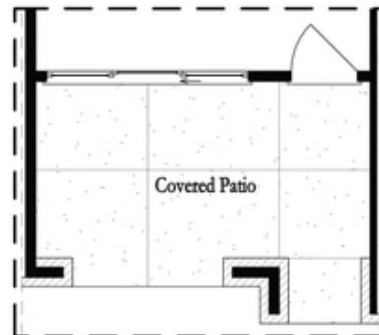


Opt. Linear Fireplace

Second Floor Options



Opt. Wet Bar



Opt. Slider Door

First Floor Options

**Want to Know More
About This Home?**

CONTACT OUR COMMUNITY SALES MANAGER
Call Us @ 678.591.1930