








PRICED AT  
**\$575,400**

-  1674 Sq Ft
-  2 Beds
-  2.5 Baths
-  1 Car Garage
-  3.0 Story

SUMMER OF SAVINGS ! ELEVATE YOUR LIFESTYLE. Come and see us , The Providence Group , Ecco park in Alpharetta ... and take advantage of our JUNE INCENTIVE \*\* \$20,000 ANYWAY YOU WANT \*\* in our Barnesley I plan! Come see this beautiful and cozy Barnesley I Floor Plan, featuring 2 Bedrooms and 2.5 Baths with beautiful views of trees and a small pond. The Front Entry is fenced and private with a covered Terrace patio, a nice sliding Glass Door and separate front door that opens up to a Flex/Media/Office Room. As you enter on the main living level you find an spacious Open Concept Family, Dining Area and Kitchen. The Kitchen has 42" upper full overlay cabinets with soft close doors & drawers and Crown Molding. The kitchen is also equipped with Calacatta Lavasa Quartz Countertops, Tile Backsplash, and top of the line GE Stainless Steel Appliances. At the 3rd level you will find the Primary Bedrooms with Tray Ceilings and a generous His and Hers Closet, a Primary Bathroom with Dual Vanity and a Walk In Shower. Second Bedroom is situated next to the Laundry Closet along with the Secondary Bath. One-car Garage with a Charger Station, ...

Want to Know More  
About This Home?

CONTACT OUR COMMUNITY SALES MANAGER  
Call Us @ 678.591.1930

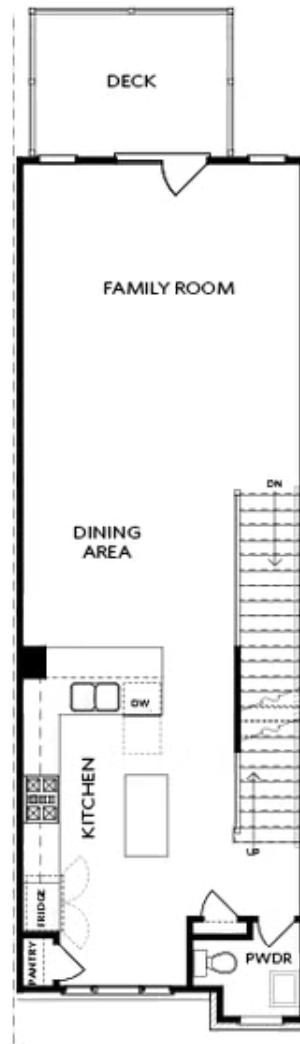


TERRACE

Elevation N

Want to Know More  
About This Home?

CONTACT OUR COMMUNITY SALES MANAGER  
Call Us @ 678.591.1930

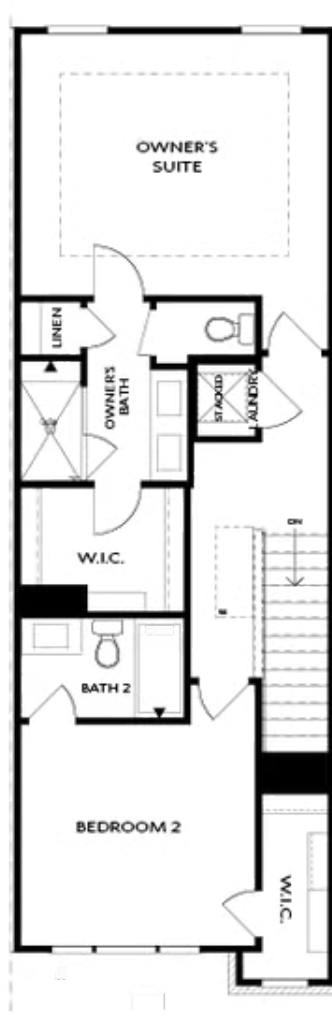


SECOND FLOOR

Elevation N

Want to Know More  
About This Home?

CONTACT OUR COMMUNITY SALES MANAGER  
Call Us @ 678.591.1930



THIRD FLOOR

Elevation N

Want to Know More  
About This Home?

CONTACT OUR COMMUNITY SALES MANAGER  
Call Us @ 678.591.1930



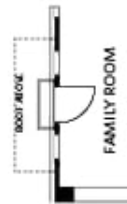
OPT Wet Bar



OPT Covered Deck



OPT Slider Door



OPT End Balcony



OPT Linear Fireplace

## OPTIONS

Want to Know More  
About This Home?

CONTACT OUR COMMUNITY SALES MANAGER  
Call Us @ 678.591.1930