



PRICED AT
\$540,400

 1674 Sq Ft

 2 Beds

 2.5 Baths

 1 Car Garage

 3.0 Story

FALL INTO SAVINGS with 4.75% FIXED RATE OR \$35K incentive for homes closing by Nov 2025 - (\$35K HAS BEEN APPLIED to listed purchase price). HOME IS MOVE IN READY! Discover the Charm of the Barnesley I Floor Plan - Cozy, Elegant, and Surrounded by Nature. Step into this thoughtfully designed 2-bedroom, 2.5-bath home offering stunning views of mature trees and a peaceful eco pond. From the moment you arrive, you'll appreciate the private, fenced front entry that opens to a covered terrace patio—the perfect space for morning coffee or evening relaxation. A large sliding glass door and a separate front entry lead into a versatile flex/media/office room, ideal for working from home or entertaining guests. On the main level, you'll find a bright and spacious open-concept living area, seamlessly connecting the family room, dining area, and kitchen. The kitchen is a true standout, featuring: 42" full overlay upper cabinets with soft-close doors and drawers with Elegant crown molding ~ Striking Calacatta Lavasa quartz countertops ~ Stylish tile backsplash ~ Premium GE stainless steel appliances. Upstairs, the primary suite offers a serene retreat, complete with tray ceilings, a generous walk-in closet, and a beautifully appointed en-suite bath with dual vanities ...

Want to Know More
About This Home?

CONTACT OUR COMMUNITY SALES MANAGER
Call Us @ 678.591.1930

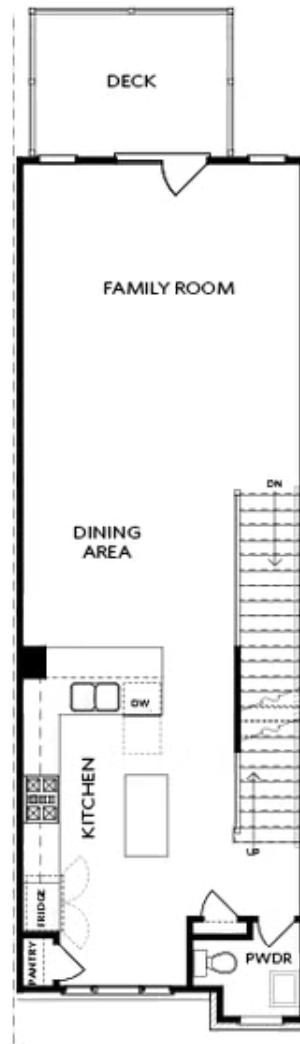


TERRACE

Elevation N

Want to Know More
About This Home?

CONTACT OUR COMMUNITY SALES MANAGER
Call Us @ 678.591.1930

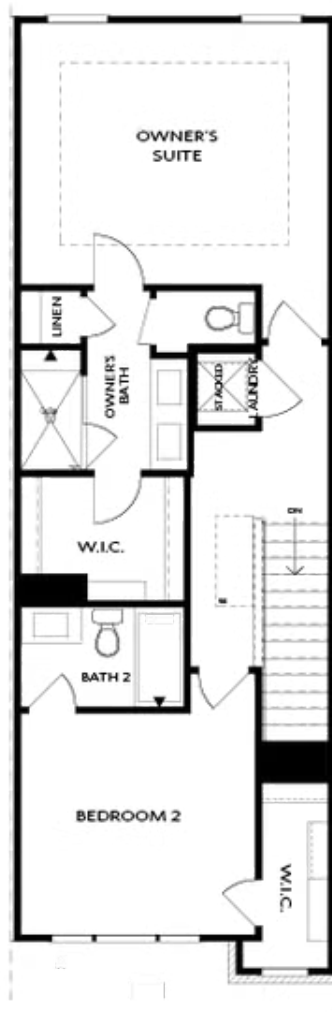


SECOND FLOOR

Elevation N

Want to Know More
About This Home?

CONTACT OUR COMMUNITY SALES MANAGER
Call Us @ 678.591.1930



THIRD FLOOR

Elevation N

Want to Know More
About This Home?

CONTACT OUR COMMUNITY SALES MANAGER
Call Us @ 678.591.1930



OPT Wet Bar



OPT Covered Deck



OPT Slider Door



OPT End Balcony



OPT Linear Fireplace

OPTIONS

Want to Know More
About This Home?

CONTACT OUR COMMUNITY SALES MANAGER
Call Us @ 678.591.1930