


PRICED AT  
**\$582,040**

 1674 Sq Ft

 2 Beds

 2.5 Baths

 1 Car Garage

 3.0 Story

SCORE MORE SAVINGS with \$35K or 4.75% FIXED RATE PLUS additional \$10K in closing costs when you use our Preferred Lender for contracts written by 9.30.25!! Move in Package has been added - washer/dryer/refrigerator. HOME IS COMPLETE - QUICK MOVE IN! Come tour our vibrant community of townhomes and explore The Barnesley I floor plan featuring 2 Bedrooms / 2.5 Baths in the heart of Alpharetta, with a covered brick Terrace at the Front Entry. The welcoming brick terrace provides a great space to entertain and enjoy the outdoors right from the front of your home. Enter through the terrace-level into a spacious media room—perfect for movie nights, a home office, or a flexible living area. Designed for entertaining and relaxation, the media room features a built-in wet bar that adds both style and convenience. Upstairs, the open-concept main level features seamless flow between the kitchen, dining, and family room, ideal for everyday living and entertaining. Beautiful hard surface flooring extends throughout the main level, adding a sleek, durable, and cohesive look. Large windows bring in natural light, enhancing the room's warmth and connection to the adjacent kitchen and dining areas for effortless flow. Step directly from the family room ...

Want to Know More  
About This Home?

CONTACT OUR COMMUNITY SALES MANAGER  
Call Us @ 678.591.1930

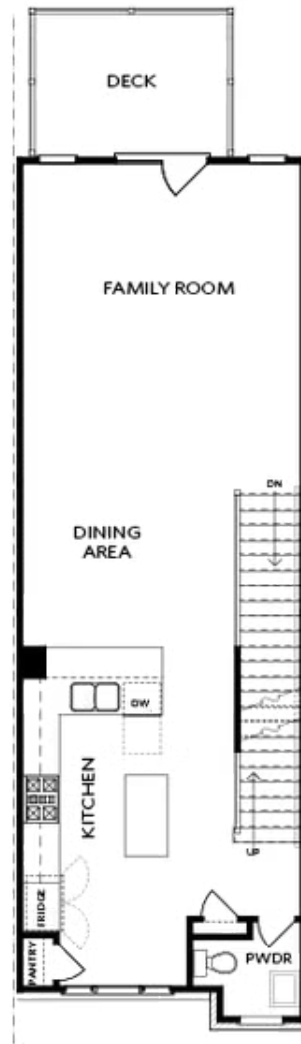


TERRACE

Elevation N

Want to Know More  
About This Home?

CONTACT OUR COMMUNITY SALES MANAGER  
Call Us @ 678.591.1930

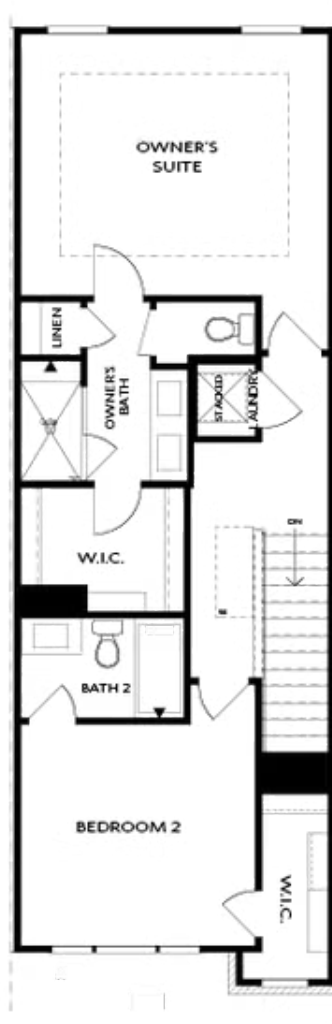


SECOND FLOOR

Elevation N

Want to Know More  
About This Home?

CONTACT OUR COMMUNITY SALES MANAGER  
Call Us @ 678.591.1930



THIRD FLOOR

Elevation N

Want to Know More  
About This Home?

CONTACT OUR COMMUNITY SALES MANAGER  
Call Us @ 678.591.1930



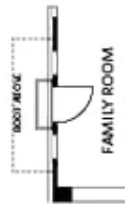
OPT Wet Bar



OPT Covered Deck



OPT Slider Door



OPT End Balcony



OPT Linear Fireplace

## OPTIONS

Want to Know More  
About This Home?

CONTACT OUR COMMUNITY SALES MANAGER  
Call Us @ 678.591.1930