



PRICED AT  
**\$578,040**

 1694 Sq Ft

 2 Beds

 2.5 Baths

 1 Car Garage

 3.0 Story

YOUR HOME, YOUR WAY with \$30K - Customize your home buying journey - use it toward low rates, upgrades, appliances, closing costs & more. Ends August 31, 2025. Come visit us at Ecco Park in Alpharetta & Elevate your lifestyle in the exquisite Barnesley I featuring 2 Bedrooms and 2.5 Baths. MOVE IN PACKAGE has been added - washer/dryer/refrigerator! This Townhome offers a blend of luxury and functionality, making way for comfortable living. Homesite 27 has high end finishes, thoughtful design and an outdoor space for entertainment. Enter through a COVERED PATIO and fenced front yard equipped with irrigation system for low maintenance living. As you enter the front door, you step inside to a MEDIA/FLEX ROOM with SLIDER DOOR that opens to the covered, brick patio - the perfect indoor/outdoor space. Take the stairs to the Open Concept Kitchen, Family Room & Dining Area. This gorgeous Kitchen is designed with our Cool Linen Design Package featuring creamy white Quartz Countertops, 42" White Cabinets with Crown molding and Soft Closing Doors, GE Stainless Steel Appliances, Gas Smart Range, Built in Microwave, Dishwasher and Range Hood. 2 islands in this kitchen - an L shaped island for casual dining and a ...

Want to Know More  
About This Home?

CONTACT OUR COMMUNITY SALES MANAGER  
Call Us @ 678.591.1930

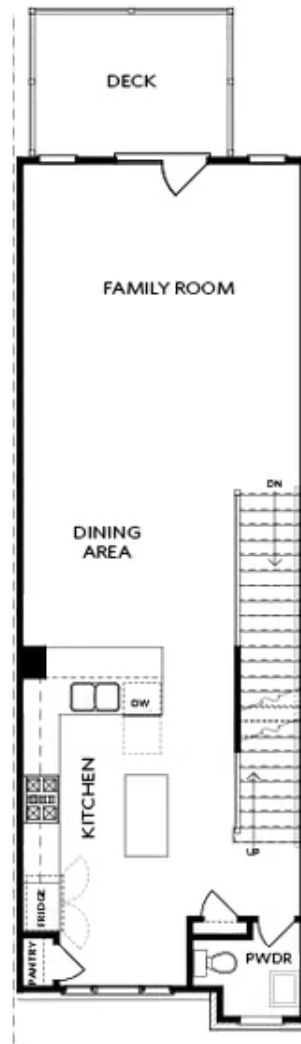


TERRACE

Elevation N

Want to Know More  
About This Home?

CONTACT OUR COMMUNITY SALES MANAGER  
Call Us @ 678.591.1930

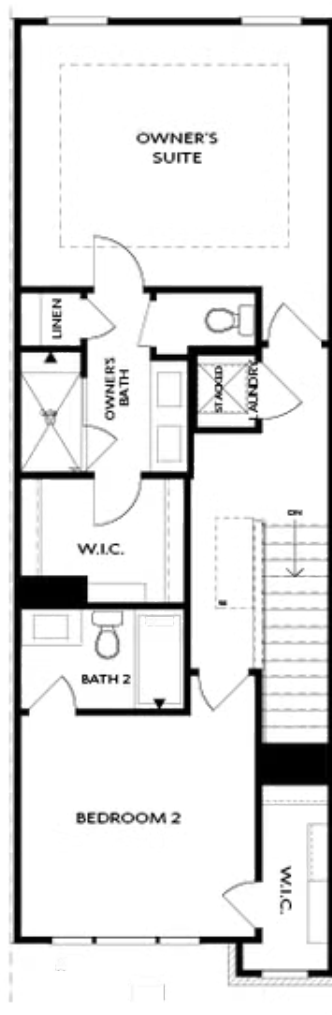


SECOND FLOOR

Elevation N

Want to Know More  
About This Home?

CONTACT OUR COMMUNITY SALES MANAGER  
Call Us @ 678.591.1930



THIRD FLOOR

Elevation N

Want to Know More  
About This Home?

CONTACT OUR COMMUNITY SALES MANAGER  
Call Us @ 678.591.1930



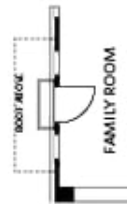
OPT Wet Bar



OPT Covered Deck



OPT Slider Door



OPT End Balcony



OPT Linear Fireplace

## OPTIONS

Want to Know More  
About This Home?

CONTACT OUR COMMUNITY SALES MANAGER  
Call Us @ 678.591.1930