



PRICED AT
\$572,900

 **1674 Sq Ft**

 **2 Beds**

 **2.5 Baths**

 **1 Car Garage**

 **3.0 Story**

New Year New Home New You! \$15K ANY WAY YOU WANT ON ALL CONTRACTS WRITTEN BY THE END OF FEBRUARY ! Elevate your lifestyle in this new home Barnesley I Floor Plan . Astounding 2 Bedrooms and 2.5 Baths in the heart of Alpharetta, with a Terrace at the Front Entry, great for an outdoor experience , Sliding Glass Doors opens up to a Flex/ Media / Office Room, perfect for working remotely. Going upstairs Open Concept Living Room and a beautiful Kitchen with 2 islands. The Kitchen is a Award Winning featuring our Warm Slate Design Collection finishing, Calacatta Prado Quartz Countertops , 42' Gray Maple Cabinets with Crown Molding , GE Profile stainless appliance Collection , Gas Range , Range Hood , Dishwasher , and Built in Microwave, creates a wonderful entertaining space for friends and family. The flooring is Ambassador luxury vinyl plank. The Living Room is spacious with great natural light and a wooden deck . Upstairs you have 2 full Bedrooms with 2 Full Baths , with the Washer & Dryer Room conveniently located in the Hallway. The garage is in the Rear with one car parking space , also the Driveway could be used ...

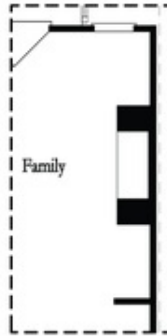
**Want to Know More
About This Home?**

CONTACT OUR COMMUNITY SALES MANAGER
Call Us @ 678.591.1930



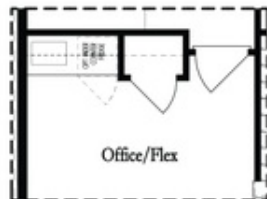
Want to Know More
About This Home?

CONTACT OUR COMMUNITY SALES MANAGER
Call Us @ 678.591.1930

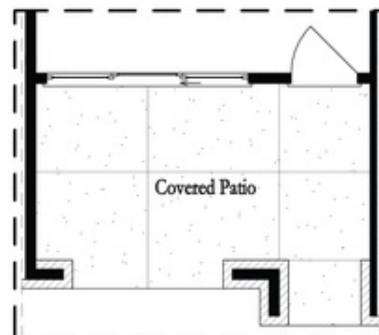


Opt. Linear Fireplace

Second Floor Options



Opt. Wet Bar



Opt. Slider Door

First Floor Options

Want to Know More
About This Home?

CONTACT OUR COMMUNITY SALES MANAGER
Call Us @ 678.591.1930