

PRICED AT
\$572,900

 1674 Sq Ft

 2 Beds

 2.5 Baths

 1 Car Garage

 3.0 Story

Take advantage of our SUMMER OF SAVINGS Brand new & MOVE IN READY \$20,000 ANY WAY YOU WANT ON ALL CONTRACTS WRITTEN BY THE END OF JUNE! The Alpharetta address you've always wanted and the neighborhood you've always imagined - now you really can have both at Ecco Park! Astounding 2 Bedrooms and 2.5 Baths in the heart of Alpharetta, with a COVERED TERRACE PATIO at the Front Entry, great for an outdoor experience, Sliding Glass Doors opens up to a Flex/ Media / Office Room, perfect for working remotely. The open main floor features the family room, dining area and stunning kitchen with hard surface floors. The Kitchen featuring our Warm Slate Design Collection has stained cabinets with 42" uppers and under cabinet lighting, beautiful Quartz Countertops, GE Profile stainless appliance Collection - Gas Range, Vent Hood, Dishwasher & Built in Microwave, creating a wonderful entertaining space for friends and family. The Living Room is spacious with great natural light and has access to the rear deck. Upstairs you have 2 full Bedrooms with 2 Full Baths, with the Washer & Dryer Room conveniently located in the Hallway. The garage is in the Rear with one car parking space. ...

Want to Know More
About This Home?

CONTACT OUR COMMUNITY SALES MANAGER
Call Us @ 678.591.1930



TERRACE

Elevation N

Want to Know More
About This Home?

CONTACT OUR COMMUNITY SALES MANAGER
Call Us @ 678.591.1930

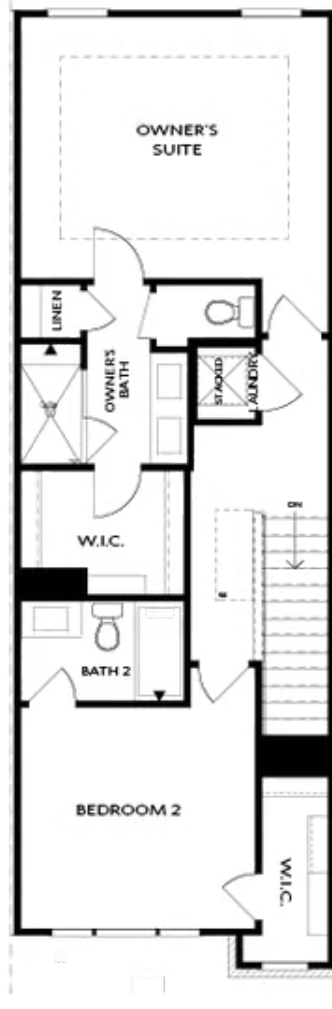


SECOND FLOOR

Elevation N

Want to Know More
About This Home?

CONTACT OUR COMMUNITY SALES MANAGER
Call Us @ 678.591.1930



THIRD FLOOR

Elevation N

Want to Know More
About This Home?

CONTACT OUR COMMUNITY SALES MANAGER
Call Us @ 678.591.1930



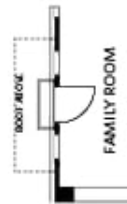
OPT Wet Bar



OPT Covered Deck



OPT Slider Door



OPT End Balcony



OPT Linear Fireplace

OPTIONS

Want to Know More
About This Home?

CONTACT OUR COMMUNITY SALES MANAGER
Call Us @ 678.591.1930