



PRICED AT
\$576,900

 1694 Sq Ft

 2 Beds

 2.5 Baths

 1 Car Garage

 3.0 Story

FABOLOUS FALL SAVINGS ...Welcome to your new home Barnesley I floor plan 2 bedrooms and 2.5 baths ,create a luxurious and elegance ambiance . Terrace at the Front Entry, and nice Sliding Glass Door opens up to a Flex / Media/ Office Room , perfect for outdoor /indoor entrainment, or remote working . Front Yard is fenced with a private entrance and Irrigation System . Upstairs you have an Open Concept Kitchen and Living Room , with a nice wooden Deck . The Kitchen has 2 small Islands with Calacatta Prado Quartz Countertops Backsplash , 42' Cabinets Rye Design Collection , and much more . GE top of the line Appliances , Gas Cooktop, Dishwasher , built-in Microwave, and Range Hood , and Electrical Oven are standard . At the 3rd level you have 2 Full Baths and the Washer & Dryer Room. Master Bedroom is spacious and with plenty of natural light , and Tray Ceilings. The Master Bath has Dual Vanity and a Walk In Shower with Dry Area. The Master Bedrooms features a spacious Closet that can be shared . One car garage with electrical charger and extra storage room. More parking available throughout the community ...

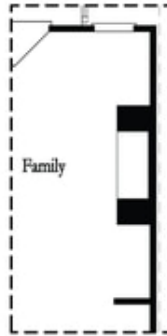
**Want to Know More
About This Home?**

CONTACT OUR COMMUNITY SALES MANAGER
Call Us @ 678.591.1930



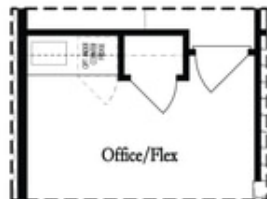
**Want to Know More
 About This Home?**

CONTACT OUR COMMUNITY SALES MANAGER
 Call Us @ 678.591.1930

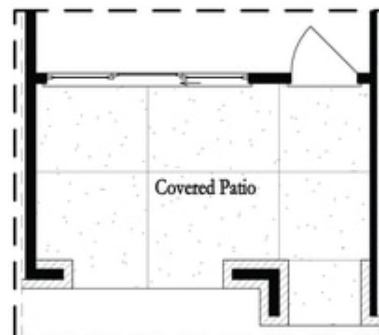


Opt. Linear Fireplace

Second Floor Options



Opt. Wet Bar



Opt. Slider Door

First Floor Options

**Want to Know More
About This Home?**

CONTACT OUR COMMUNITY SALES MANAGER
Call Us @ 678.591.1930