



PRICED AT
\$768,500

 **2164 Sq Ft**

 **3 Beds**

 **2.5 Baths**

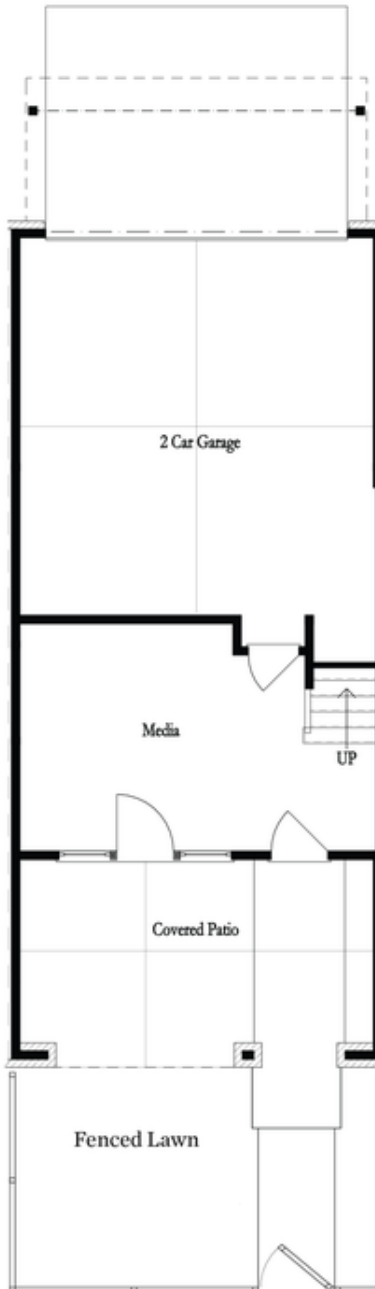
 **2 Car Garage**

 **3.0 Story**

New Year New Home New You! ELEVATE YOUR LIFETYLE.....Fantastic opportunity to own a piece of Alpharetta END UNIT # 23 Benton I, 3 bedrooms and 2.5 baths, 3 Story Townhome, stunning floor plan with a lot of cool features. Terrace Level Entry opens up to an Office / Media / Work Out Flex Room, perfect for remote working or entertaining. Slider doors open to the covered patio featuring an outdoor fireplace which allows for a more expansive space on the entry level. Upon entering the main floor, you find an Open Concept Kitchen, Dining and Family Room. The Family Room is flooded with light having 8 big windows. A Ventless Linear Fireplace has beautiful quartzite surround and a box beam mantel to warm the room on chilly evenings. The Kitchen is elegant with a Warm Slate Design Package presenting Calacatta Quartz Countertops, 4x12 tile Backsplash, beautiful stained Cabinets with Crown Molding and soft close doors and under cabinet lighting. Top of the line GE Appliances included a Gas Cooktop, Electrical Oven, Built-in Microwave, Dishwasher and Stainless Range Hood. Just behind the kitchen is a nice relaxing Sunroom with access to a covered Deck. Laundry Room, Powder Room and Closet ...

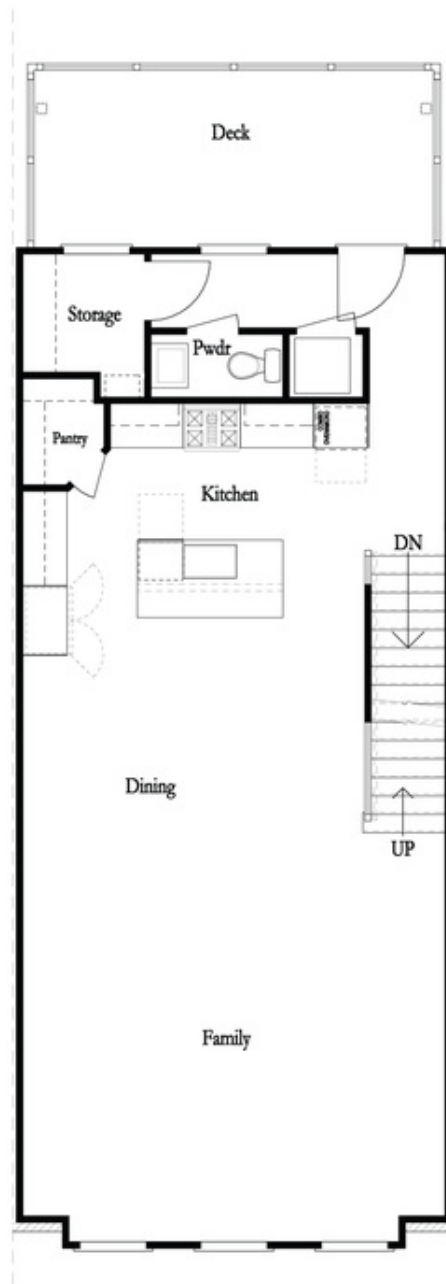
**Want to Know More
About This Home?**

CONTACT OUR COMMUNITY SALES MANAGER
Call Us @ 678.591.1930



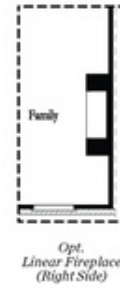
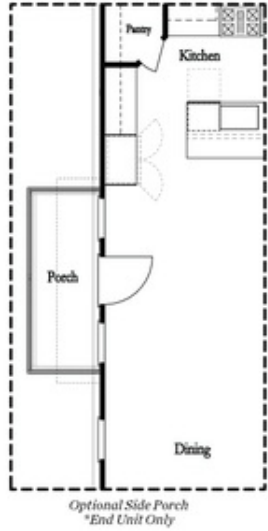
Want to Know More
About This Home?

CONTACT OUR COMMUNITY SALES MANAGER
Call Us @ 678.591.1930

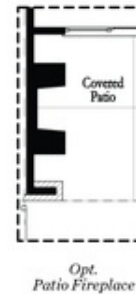
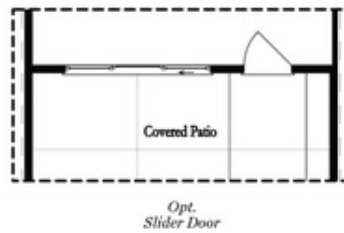
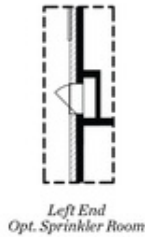


Want to Know More
About This Home?

CONTACT OUR COMMUNITY SALES MANAGER
Call Us @ 678.591.1930



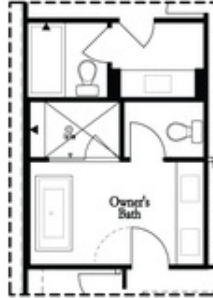
Main Level Options



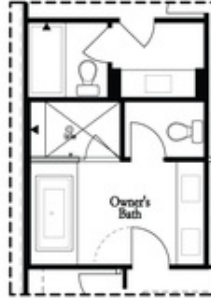
Terrace Level Options

Want to Know More
About This Home?

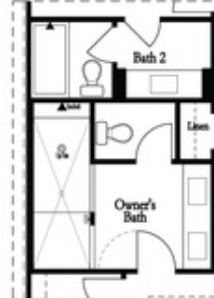
CONTACT OUR COMMUNITY SALES MANAGER
Call Us @ 678.591.1930



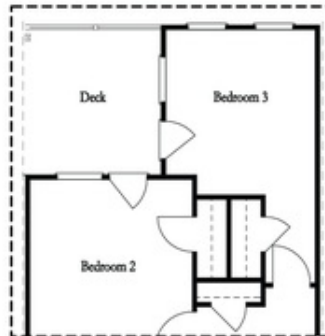
*Opt. Freestanding
Tub/Shower Combo*



*Opt. Decked
Tub/Shower Combo*



Opt. Walk-Through Shower



*Opt. Bedroom 3
*Only Available with Sunroom option
Laundry Moved to Main Level w/ this Opt.

Upper Level Options

Want to Know More
About This Home?

CONTACT OUR COMMUNITY SALES MANAGER
Call Us @ 678.591.1930