



PRICED AT  
**\$723,500**



2164 Sq Ft



3 Beds



2.5 Baths



2 Car Garage

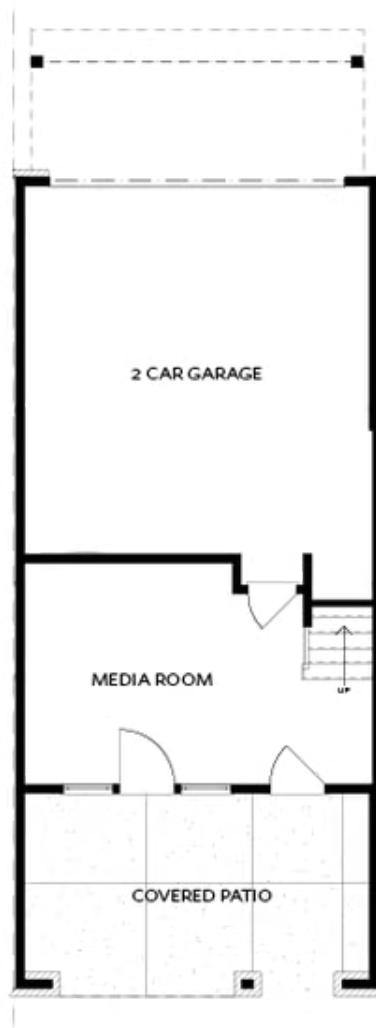


3.0 Story

Elevate your savings with \$45k Promotion \$45k Promotion- (\$45K has been applied to the purchase price in FMLS). Promotion can be applied towards a price reduction, closing costs, rate buydown and more giving you the flexibility to save where it matters most. FINAL OPPORTUNITIES - ONLY 2 HOMES REMAIN. Discover the The Benton I by The Providence Group. HOME IS READY NOW! CLOSE IN 30 DAYS! Come tour this 3 story END UNIT Benton I plan featuring 3 bedrooms and 2.5 baths with a stunning and open floor plan with many cool features. Terrace Level Entry opens up to an Office / Media / Work Out / Flex Room, perfect for remote working or entertaining. Slider doors open to the covered patio featuring an outdoor fireplace which allows for a more expansive space on the entry level. Upon entering the main floor, you find an Open Concept Kitchen, Dining and Family Room. The Family Room is flooded with light having 8 big windows. A Ventless Linear Fireplace has beautiful quartzite surround and a box beam mantel to warm the room on chilly evenings. The Kitchen is elegant with a Warm Slate Design Package presenting Calacatta Prado Quartz Countertops, 4x12 tile ...

Want to Know More  
About This Home?

CONTACT OUR COMMUNITY SALES MANAGER  
Call Us @ 678.591.1930

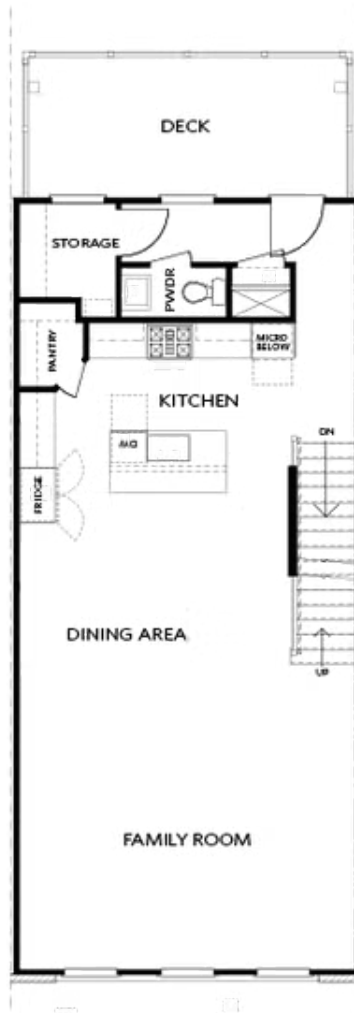


TERRACE

Elevation N

Want to Know More  
About This Home?

CONTACT OUR COMMUNITY SALES MANAGER  
Call Us @ 678.591.1930



SECOND FLOOR

Elevation N

Want to Know More  
About This Home?

CONTACT OUR COMMUNITY SALES MANAGER  
Call Us @ 678.591.1930

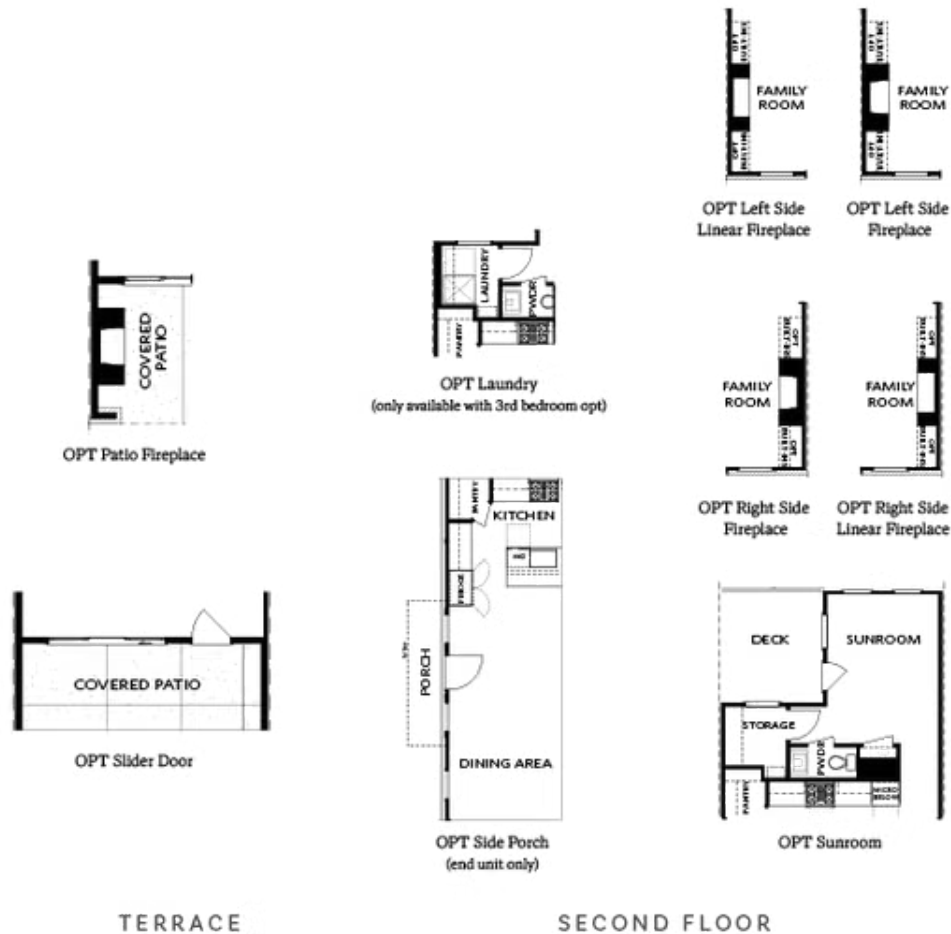


THIRD FLOOR

Elevation N

Want to Know More  
About This Home?

CONTACT OUR COMMUNITY SALES MANAGER  
Call Us @ 678.591.1930



#### OPTIONS

Want to Know More  
About This Home?

CONTACT OUR COMMUNITY SALES MANAGER  
Call Us @ 678.591.1930



OPT Open Rail



OPT Bedroom 3 - ONLY Available  
with Optional Sunroom



OPT Walk-Through Shower



OPT Freestanding  
Tub/Shower Combo



OPT Decked Tub/  
Shower Combo

## OPTIONS

Want to Know More  
About This Home?

CONTACT OUR COMMUNITY SALES MANAGER  
Call Us @ 678.591.1930