



PRICED AT  
**\$736,130**

 2201 Sq Ft

 3 Beds

 2.5 Baths

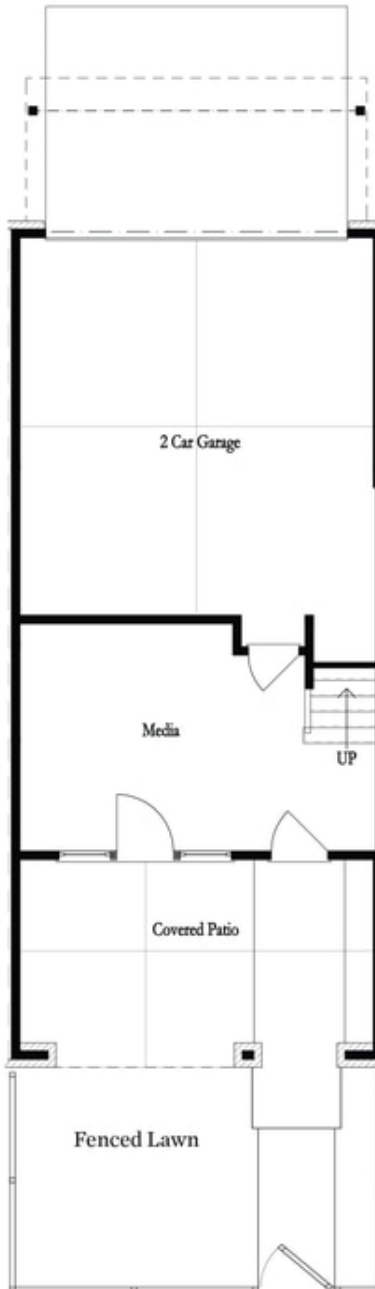
 2 Car Garage

 3.0 Story

SPRING INTO A NEW HOME AND ENJOY \$25,000 ANY WAY YOU WANT MUST CLOSE BY THE END OF MAY .END UNIT THE BENTON I. END UNIT with Entry is at the Terrace Level which features a large media room that could also be used as a game room/exercise room/study. The media rooms has sliding doors that lead to a covered patio. The perfect spot for outdoor entertaining. The main Level offers a Gourmet Kitchen with beautiful modern features such as MSI Quartz Countertops, Full Overlay Cabinets w/soft close doors & under cabinet lighting, GE Stainless Steel Appliances, Walk-In Pantry, & more! Behind the Kitchen you will find a Sunroom, perfect for an office or separate dining space w/ entry to the deck + half bath plus two separate storage closets. Kitchen Island overlooks the open concept Dining & Living Room and modern Ventless Linear Fireplace. Off of the dining area is a side porch to allow for a nice cool breeze during dinner. Staircase leading from the Main Level to the Upper-Level features metal balusters, w/ Stained Oak handrail and Oak Treads! On the Upper-Level, you will find an oversized Owner's Suite with tray ceilings and large walk-in closet! Owner's ...

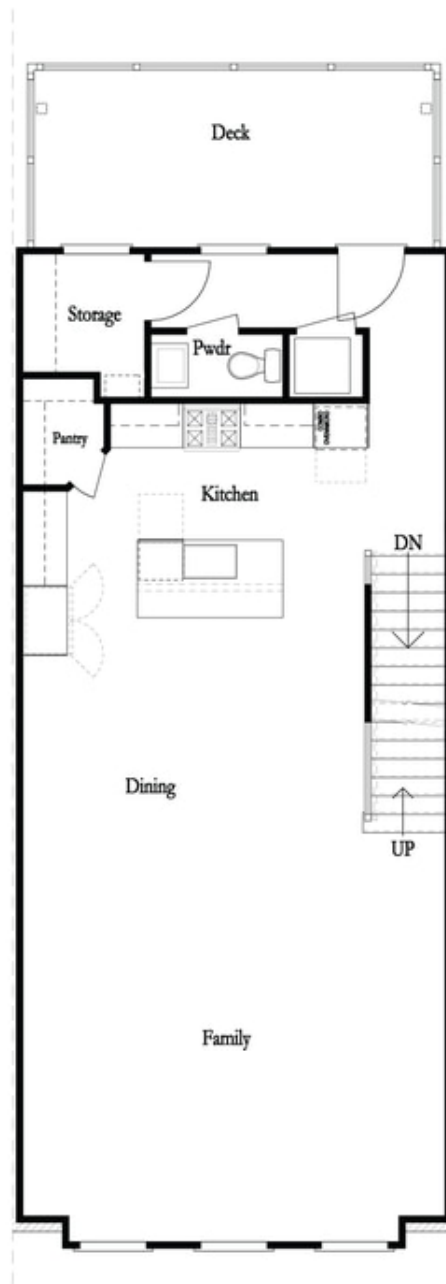
**Want to Know More  
About This Home?**

CONTACT OUR COMMUNITY SALES MANAGER  
Call Us @ 678.591.1930



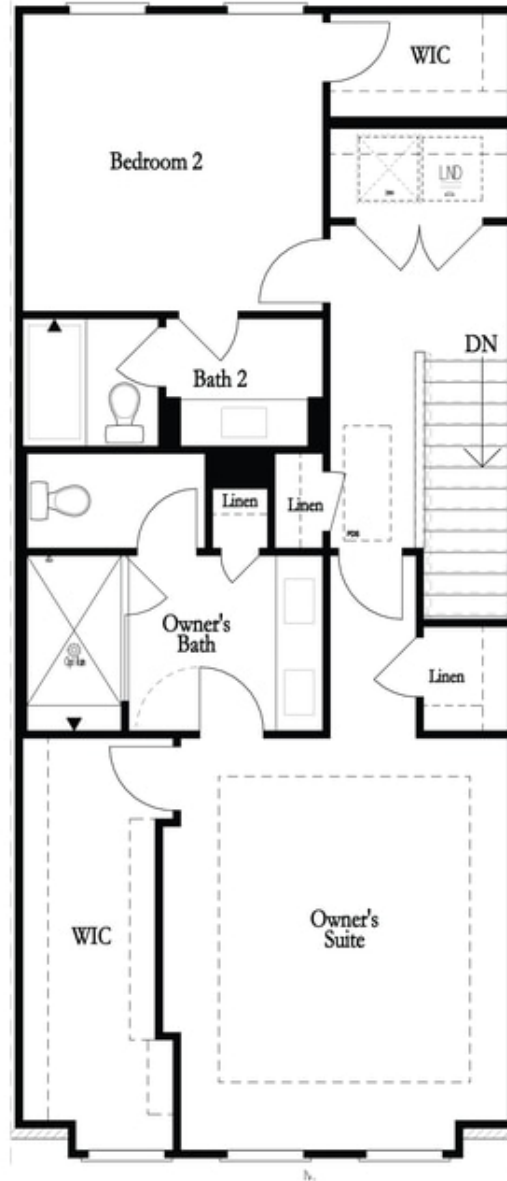
**Want to Know More  
About This Home?**

CONTACT OUR COMMUNITY SALES MANAGER  
Call Us @ 678.591.1930



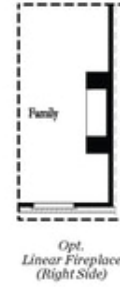
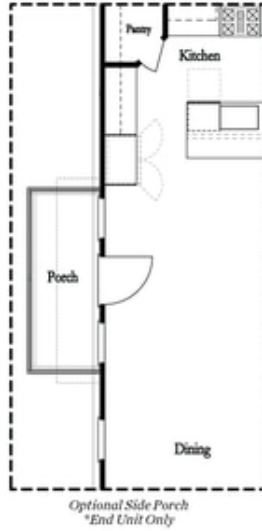
**Want to Know More  
About This Home?**

CONTACT OUR COMMUNITY SALES MANAGER  
Call Us @ 678.591.1930

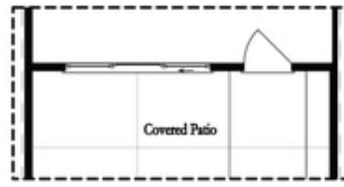
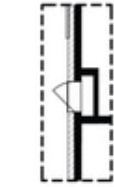


Want to Know More  
About This Home?

CONTACT OUR COMMUNITY SALES MANAGER  
Call Us @ 678.591.1930



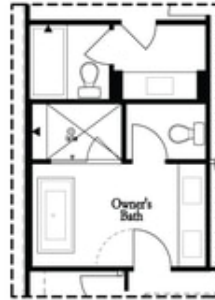
Main Level Options



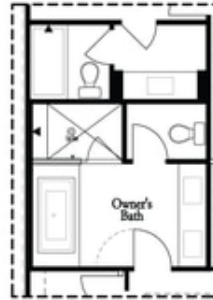
Terrace Level Options

Want to Know More  
About This Home?

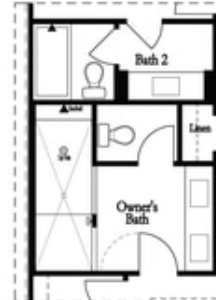
CONTACT OUR COMMUNITY SALES MANAGER  
Call Us @ 678.591.1930



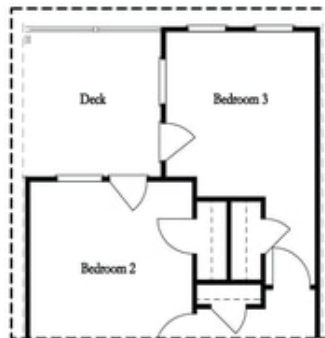
*Opt. Freestanding  
 Tub/Shower Combo*



*Opt. Decked  
 Tub/Shower Combo*



*Opt. Walk-Through Shower*



*Opt. Bedroom 3  
 \*Only Available with Sunroom option  
 \*Laundry Moved to Main Level w/ this Opt.*

Upper Level Options

**Want to Know More  
 About This Home?**

CONTACT OUR COMMUNITY SALES MANAGER  
 Call Us @ 678.591.1930