



PRICED AT
\$571,580

 **1694 Sq Ft**

 **2 Beds**

 **2.5 Baths**

 **1 Car Garage**

 **3.0 Story**

Welcome to Ecco Park, Alpharetta by The Providence Group. The Barnesley Unit 65 END UNIT. Entry is at the Terrace Level which features a large media room that could also be used as a game room/exercise room/study. The media rooms has sliding doors that lead to a covered patio. The perfect spot for outdoor entertaining. The main Level offers a Gourmet Kitchen with beautiful modern features such as MSI Quartz Countertops, Full Overlay Cabinets w/soft close doors & under cabinet lighting, GE Stainless Steel Appliances, Walk-In Pantry, & more!. Kitchen Island overlooks the open concept Dining & Living Room and modern Linear Fireplace. Off of the dining area is a side porch to allow for a nice cool breeze during dinner. Staircase leading from the Main Level to the Upper-Level features metal balusters, w/ Stained Oak handrail and Oak Treads! On the Upper-Level, you will find an oversized Owner's Suite with tray ceilings and large walk-in closet! Owner's Suite Bathroom includes dual vanities, linen closet, spacious shower w/ frameless door, 1 car garage + driveway long enough to park two additional cars. You cannot beat this location! Just minutes away from numerous dining options, retail space, trails, & more! 0.2 ...

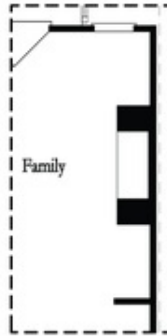
**Want to Know More
About This Home?**

CONTACT OUR COMMUNITY SALES MANAGER
Call Us @ 678.591.1930



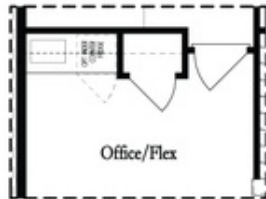
Want to Know More
About This Home?

CONTACT OUR COMMUNITY SALES MANAGER
Call Us @ 678.591.1930

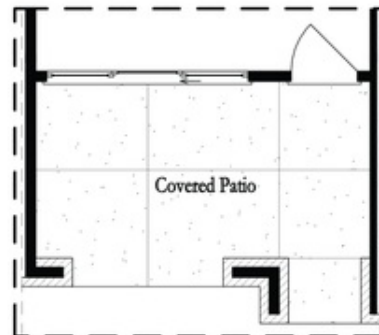


Opt. Linear Fireplace

Second Floor Options



Opt. Wet Bar



Opt. Slider Door

First Floor Options

Want to Know More
About This Home?

CONTACT OUR COMMUNITY SALES MANAGER
Call Us @ 678.591.1930