



PRICED AT  
**\$571,580**

 1694 Sq Ft

 2 Beds

 2.5 Baths

 1 Car Garage

 3.0 Story

Welcome to Ecco Park, Alpharetta by The Providence Group. The Barnesley Unit 65 END UNIT. Entry is at the Terrace Level which features a large media room that could also be used as a game room/exercise room/study. The media rooms has sliding doors that lead to a covered patio. The perfect spot for outdoor entertaining. The main Level offers a Gourmet Kitchen with beautiful modern features such as MSI Quartz Countertops, Full Overlay Cabinets w/soft close doors & under cabinet lighting, GE Stainless Steel Appliances, Walk-In Pantry, & more!. Kitchen Island overlooks the open concept Dining & Living Room and modern Linear Fireplace. Off of the dining area is a side porch to allow for a nice cool breeze during dinner. Staircase leading from the Main Level to the Upper-Level features metal balusters, w/ Stained Oak handrail and Oak Treads! On the Upper-Level, you will find an oversized Owner's Suite with tray ceilings and large walk-in closet! Owner's Suite Bathroom includes dual vanities, linen closet, spacious shower w/ frameless door, 1 car garage + driveway long enough to park two additional cars. You cannot beat this location! Just minutes away from numerous dining options, retail space, trails, & more! 0.2 ...

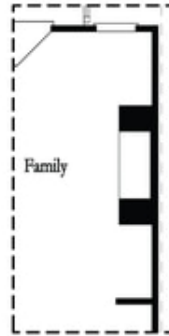
**Want to Know More  
About This Home?**

CONTACT OUR COMMUNITY SALES MANAGER  
Call Us @ 678.591.1930



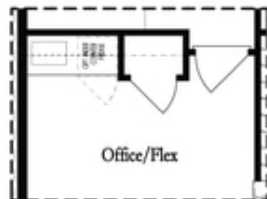
**Want to Know More  
 About This Home?**

CONTACT OUR COMMUNITY SALES MANAGER  
 Call Us @ 678.591.1930

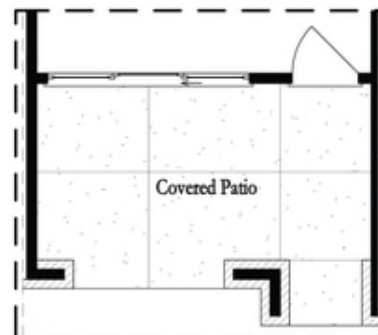


*Opt. Linear Fireplace*

### Second Floor Options



*Opt. Wet Bar*



*Opt. Slider Door*

### First Floor Options

**Want to Know More  
About This Home?**

CONTACT OUR COMMUNITY SALES MANAGER  
Call Us @ 678.591.1930