



PRICED AT  
**\$687,150**

 2201 Sq Ft

 3 Beds

 2.5 Baths

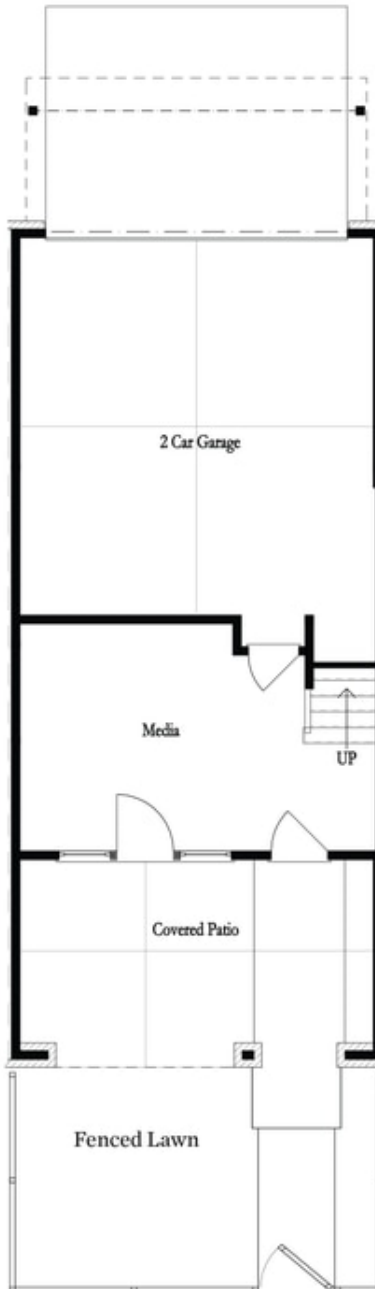
 2 Car Garage

 3.0 Story

Come see our Beautiful floorplan - The Benton I in the highly sought after Ecco Park Community in Alpharetta. This 3/2.5 bath is an amazing unit with a lots of dramatic features. Enter at the terrace level which features a covered patio with an outdoor fireplace and sliding doors into a spacious media room. Head up to the main floor where you find a large open floorplan with kitchen, dining and family room with cozy fireplace. Gorgeous designer touches in the kitchen including Quartz countertops, tiled backsplash, stainless steels appliances and large island overlooking the dining and family room. With a 3rd bedroom addition on the upper floor allows for a sunroom on the main floor. The owners suite on the upper floor has a spa like bath that features a Free standing tub along with a tiled, walk in shower, dual vanity and tile floors in the bathrooms. 2 secondary bedrooms share a hall bath. Thermocrete is used for a sound proof experience. Phenomenal schools, walk in distance to North Point Mall, Golf Pro, restaurants , shopping centers, amenities. Don't miss this opportunity to own a piece of Alpharetta. [The Benton I] \$5K closing assistance when finance with one ...

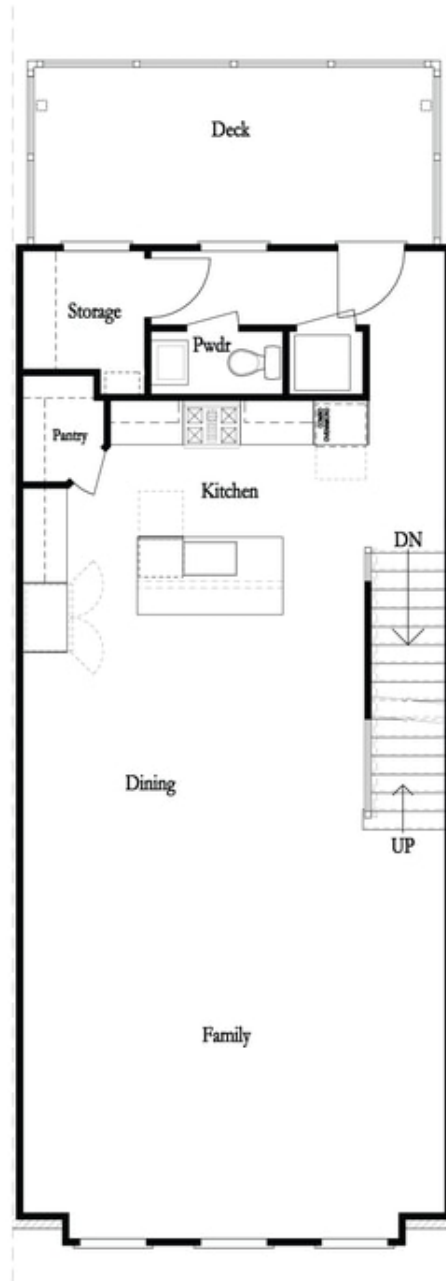
**Want to Know More  
About This Home?**

CONTACT OUR COMMUNITY SALES MANAGER  
Call Us @ 678.591.1930



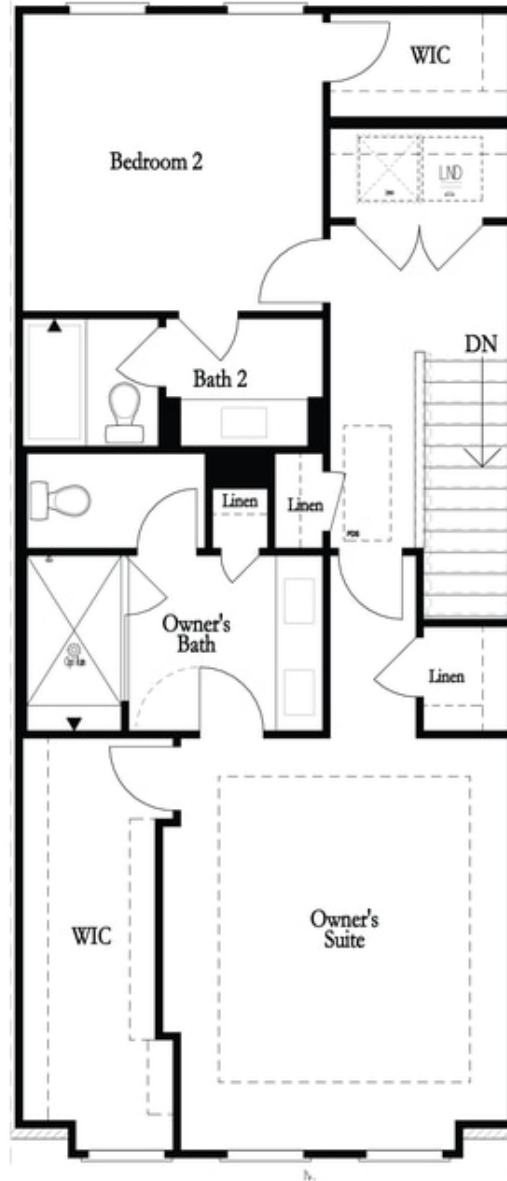
**Want to Know More  
About This Home?**

CONTACT OUR COMMUNITY SALES MANAGER  
Call Us @ 678.591.1930



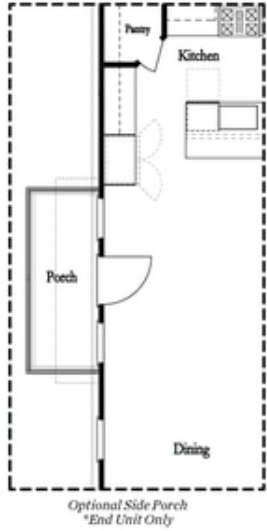
**Want to Know More  
About This Home?**

CONTACT OUR COMMUNITY SALES MANAGER  
Call Us @ 678.591.1930

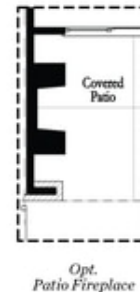
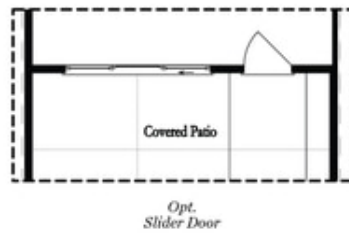
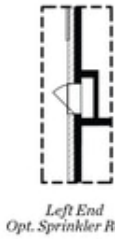


Want to Know More  
About This Home?

CONTACT OUR COMMUNITY SALES MANAGER  
Call Us @ 678.591.1930



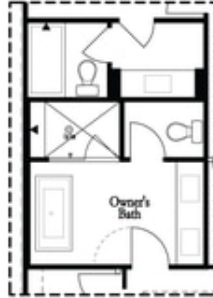
Main Level Options



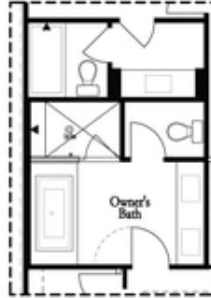
Terrace Level Options

Want to Know More  
About This Home?

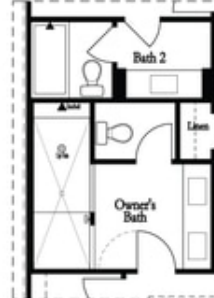
CONTACT OUR COMMUNITY SALES MANAGER  
Call Us @ 678.591.1930



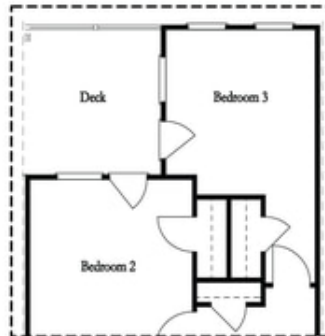
*Opt. Freestanding  
Tub/Shower Combo*



*Opt. Decked  
Tub/Shower Combo*



*Opt. Walk-Through Shower*



*Opt. Bedroom 3  
\*Only Available with Sunroom option  
\*Laundry Moved to Main Level w/ this Opt.*

Upper Level Options

Want to Know More  
About This Home?

CONTACT OUR COMMUNITY SALES MANAGER  
Call Us @ 678.591.1930