



PRICED AT  
**\$576,240**

 1694 Sq Ft

 2 Beds

 2.5 Baths

 1 Car Garage

 3.0 Story

Astonishing floor plan in the beautiful Ecco Park in Alpharetta GA. Walking distance to Northpoint Mall, shopping, restaurants, parks, and entertainment. Home site 61 features the Barnesley floorplan. This outstanding unit offers 9' ceilings with an open family room and linear fireplace. Access to the deck from the family room makes a great outdoor space. The designer kitchen has quartz counter tops, island with pendant lights, 42' white cabinets, stainless steel appliances that includes stove, vent hood, dishwasher and microwave. The main floor and terrace level have Hard surface floors while the bedrooms have carpet with an option to upgrade. The terrace level has a wonderful flex space that can be used to fit your lifestyle - office/media/exercise room. Glass panel slider at the terrace level opens all the way to a covered patio. Energy efficient 50 gallons water heater, thermocrete walls for a enhanced sound insulation, and of course EV charger in the garage for electrical cars. Convenient walking trails, close to Avalon, Top Golf, Country Club Roswell, Whole Foods and many more. Not actual home. Photos of previously built Barnesley floorplan.

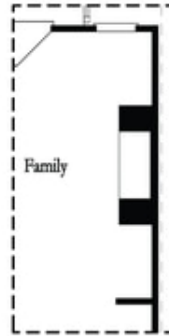
**Want to Know More  
About This Home?**

CONTACT OUR COMMUNITY SALES MANAGER  
Call Us @ 678.591.1930



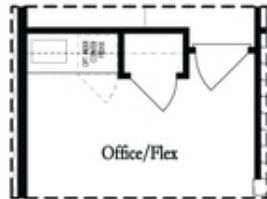
**Want to Know More  
About This Home?**

CONTACT OUR COMMUNITY SALES MANAGER  
Call Us @ 678.591.1930

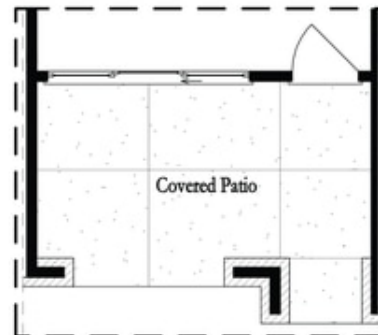


*Opt. Linear Fireplace*

### Second Floor Options



*Opt. Wet Bar*



*Opt. Slider Door*

### First Floor Options

**Want to Know More  
About This Home?**

CONTACT OUR COMMUNITY SALES MANAGER  
Call Us @ 678.591.1930