



PRICED AT
\$743,590

 **2145 Sq Ft**

 **3 Beds**

 **2.5 Baths**

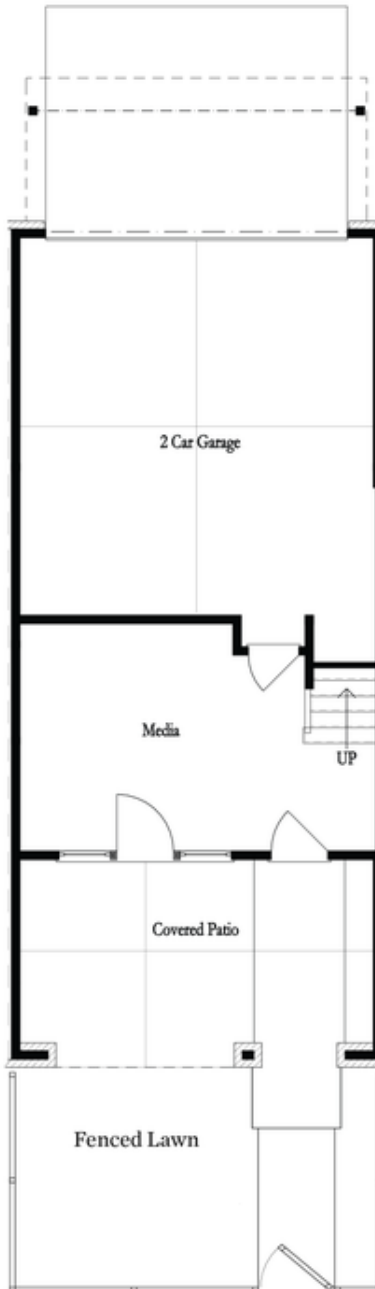
 **2 Car Garage**

 **3.0 Story**

Homesite 60 is a sought after END UNIT. Entry is at the Terrace Level which features a large media room that could also be used as a game room/exercise room/study. The media rooms has sliding doors that lead to a covered patio with a fireplace. The perfect spot for outdoor entertaining. The main Level offers a Gourmet Kitchen with beautiful modern features such as MSI Quartz Countertops, Full Overlay Cabinets w/soft close doors & under cabinet lighting, GE Stainless Steel Appliances, Walk-In Pantry, & more! Behind the Kitchen you will find a Sunroom, perfect for an office or separate dining space w/ entry to the deck + half bath plus two separate storage closets. Kitchen Island overlooks the open concept Dining & Living Room and modern Linear Fireplace. Off of the dining area is a side porch to allow for a nice cool breeze during dinner. Staircase leading from the Main Level to the Upper-Level features metal balusters, w/ Stained Oak handrail and Oak Treads! On the Upper-Level, you will find an oversized Owner's Suite with tray ceilings and large walk-in closet! Owner's Suite Bathroom includes dual vanities, linen closet, spacious shower w/ frameless door, soaking tub & separate water ...

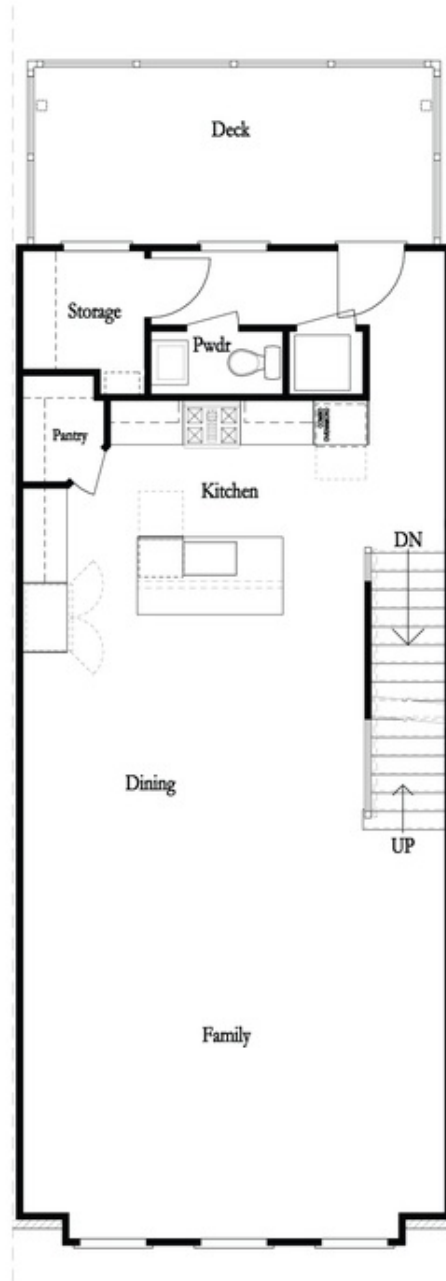
Want to Know More
About This Home?

CONTACT OUR COMMUNITY SALES MANAGER
Call Us @ 678.591.1930



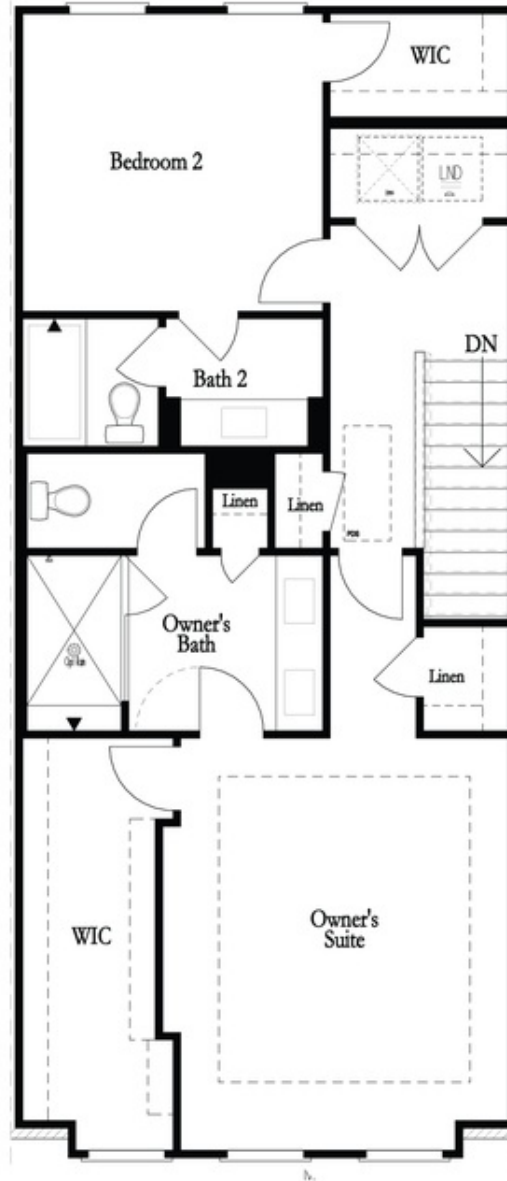
Want to Know More
About This Home?

CONTACT OUR COMMUNITY SALES MANAGER
Call Us @ 678.591.1930



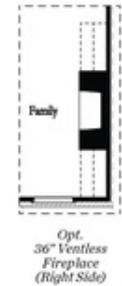
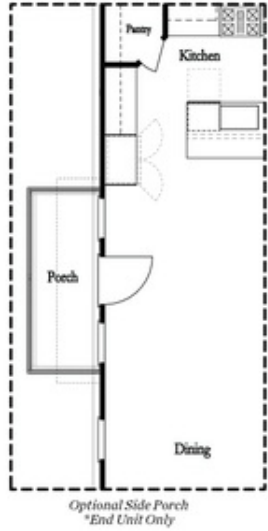
Want to Know More
About This Home?

CONTACT OUR COMMUNITY SALES MANAGER
Call Us @ 678.591.1930

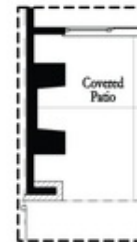
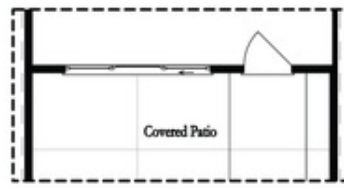
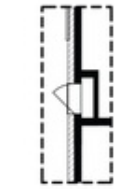


Want to Know More
About This Home?

CONTACT OUR COMMUNITY SALES MANAGER
Call Us @ 678.591.1930



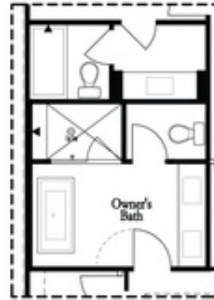
Main Level Options



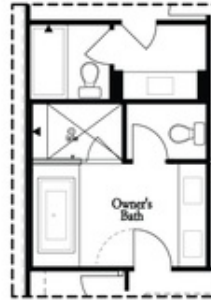
Terrace Level Options

Want to Know More
About This Home?

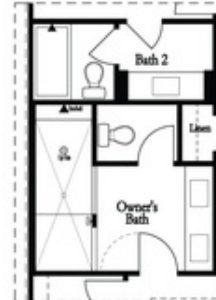
CONTACT OUR COMMUNITY SALES MANAGER
Call Us @ 678.591.1930



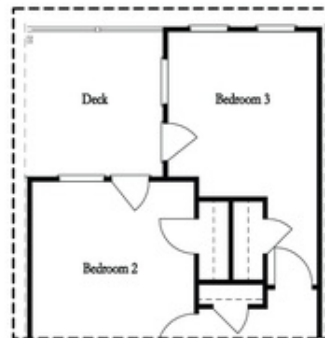
*Opt. Freestanding
Tub/Shower Combo*



*Opt. Decked
Tub/Shower Combo*



Opt. Walk-Through Shower



*Opt. Bedroom 3
*Only Available with Sunroom option
Laundry Moved to Main Level w/ this Opt.

Upper Level Options

Want to Know More
About This Home?

CONTACT OUR COMMUNITY SALES MANAGER
Call Us @ 678.591.1930