



PRICED AT
\$644,450

 2163 Sq Ft

 3 Beds

 3.5 Baths

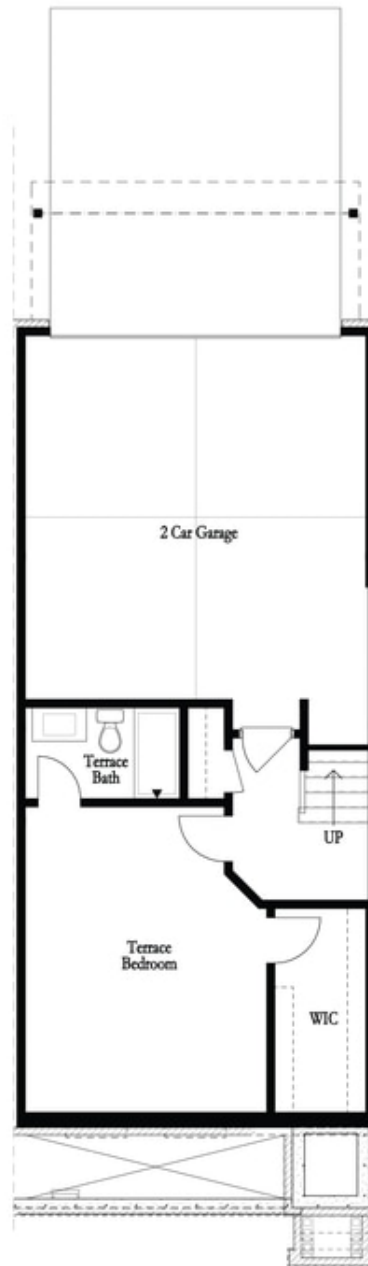
 2 Car Garage

 3.0 Story

SPRING INTO A NEW HOME WITH . \$10,000 ANY WAY YOU WANT MUST CLOSE BY THE END OF MAY..Welcome to Ecco Park and the Benton II floor plan Featuring our newly upgraded Warm Linen Design Collection - Homesite 56 includes a private bedroom on the terrace level with full bath & spacious walk-in closet + entry on Main Level. Main Level offers a Gourmet Kitchen with sought-after, modern features such as MSI Quartz Countertops, Full Overlay Cabinets w/ soft close doors & under cabinet lighting, GE Stainless Steel Appliances, Walk-In Pantry, & more! Kitchen Island overlooks the open concept Dining & Living Room. Tucked away behind the kitchen is a hallway that leads to a private half bath, a nice size storage area and access to the deck. Staircase leading from the Main Level to the Upper-Level features metal balusters, w/ Stained Oak handrail and Oak Treads! On the Upper-Level, you will find an oversized Owner's Suite with tray ceilings and large walk-in closet, and hard surface flooring! Owner's Suite Bathroom includes dual vanities, decked tub, linen closet, spacious shower w/ frame\$10 K any way you want on all the contracts written in January less door. 2 car garage + ...

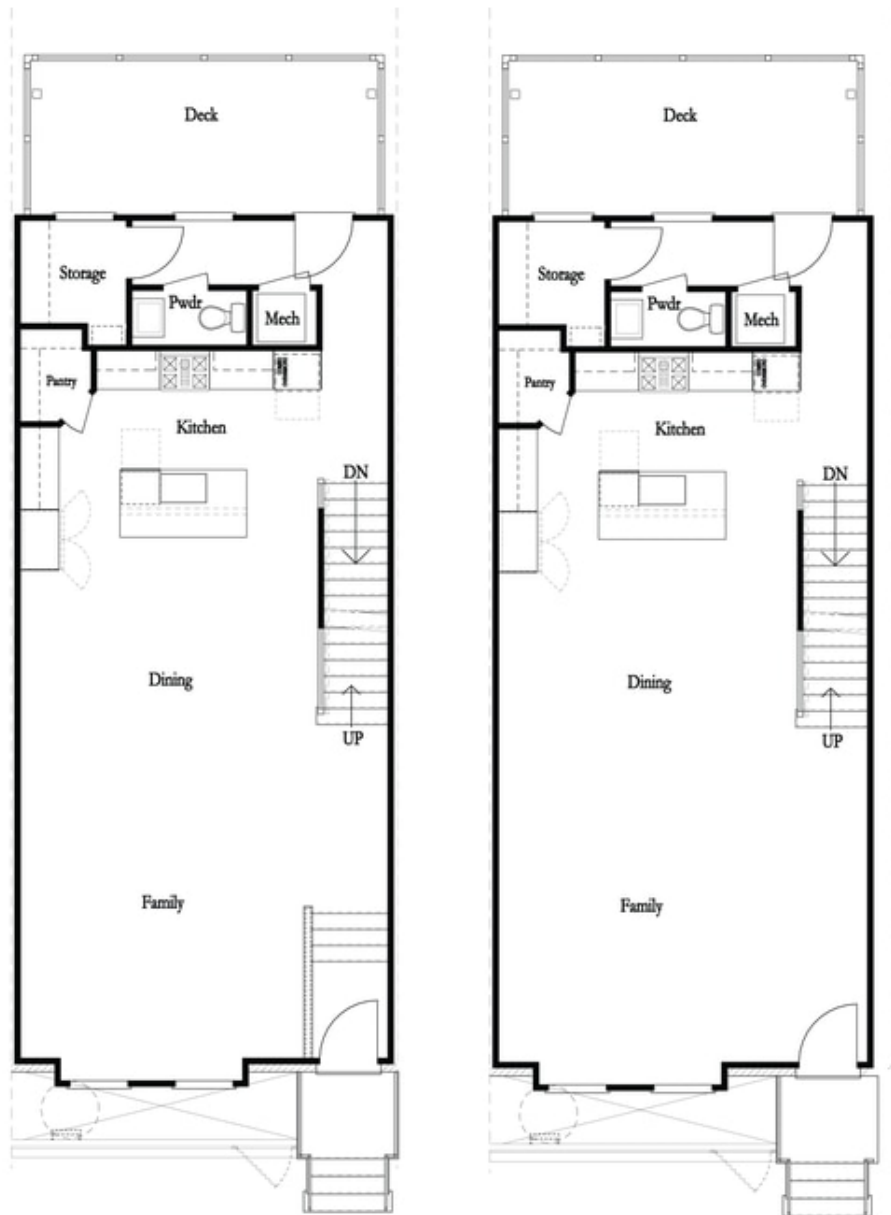
**Want to Know More
About This Home?**

CONTACT OUR COMMUNITY SALES MANAGER
Call Us @ 678.591.1930



**Want to Know More
About This Home?**

CONTACT OUR COMMUNITY SALES MANAGER
Call Us @ 678.591.1930



**Want to Know More
About This Home?**

CONTACT OUR COMMUNITY SALES MANAGER
Call Us @ 678.591.1930



**Want to Know More
About This Home?**

CONTACT OUR COMMUNITY SALES MANAGER
Call Us @ 678.591.1930

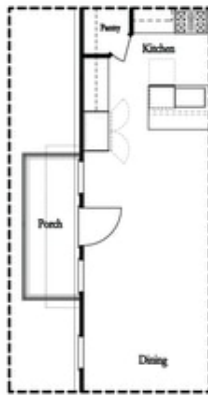


*Left End
 Opt. Sprinkler Room*



*Right End
 Opt. Sprinkler Room*

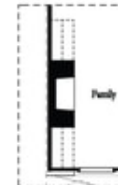
Terrace Level Options



*Optional Side Porch
 End Unit Only



Opt. Sunroom



Opt. 36" Fireplace



Opt. Linear Fireplace

Main Level Options

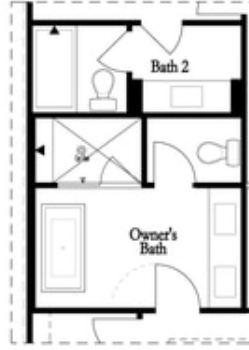
**Want to Know More
 About This Home?**

CONTACT OUR COMMUNITY SALES MANAGER
 Call Us @ 678.591.1930

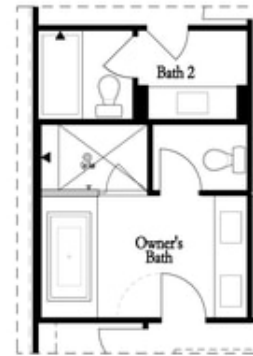
Options



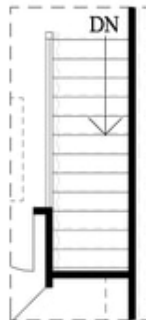
*Opt. Walk-Through
 Shower*



*Opt. Freestanding
 Tub/Shower Combo*



*Opt. Decked
 Tub/Shower Combo*



Opt. Open Rail

Third Floor Options

**Want to Know More
 About This Home?**

CONTACT OUR COMMUNITY SALES MANAGER
 Call Us @ 678.591.1930