



PRICED AT
\$707,250

 2268 Sq Ft

 3 Beds

 3.5 Baths

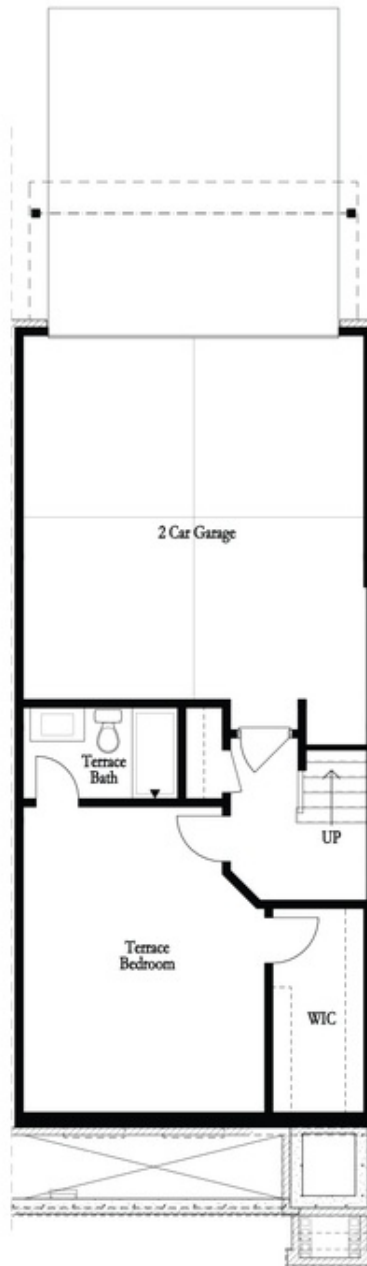
 2 Car Garage

 3.0 Story

SIZZLING SUMMER SAVINGS . . \$10,000 ANY WAY YOU WANT .MUST CLOSE BY THE END OF MAY. THIS IS END UNIT - Featuring our newly upgraded Cool Stone Design Collection - Homesite 53 includes a private bedroom on the terrace level with full bath & spacious walk-in closet + entry on Main Level. Main Level offers a Gourmet Kitchen with sought-after, modern features such as MSI Quartz Countertops, Full Overlay Cabinets w/ soft close doors & under cabinet lighting, GE Stainless Steel Appliances, Walk-In Pantry, & more! Behind the Kitchen you will find a Sunroom, perfect for an office or separate dining space w/ entry to the deck + half bath, & two separate storage closets. Kitchen Island overlooks the open concept Dining & Living Room. Centered in the Living Room is a ventless fireplace w/ stained wood mantel & stacked white quartzite surround. Staircase leading from the Main Level to the Upper-Level features metal balusters, w/ Stained Oak handrail and Oak Treads! On the Upper-Level, you will find an oversized Owner's Suite with tray ceilings and large walk-in closet, and hard surface flooring through out! Owner's Suite Bathroom includes dual vanities, linen closet, spacious shower w/ frameless door and ...

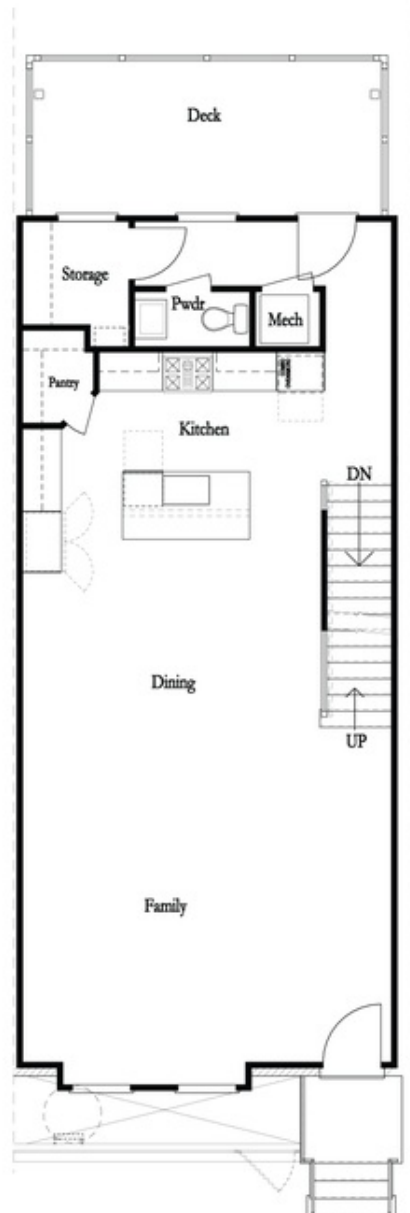
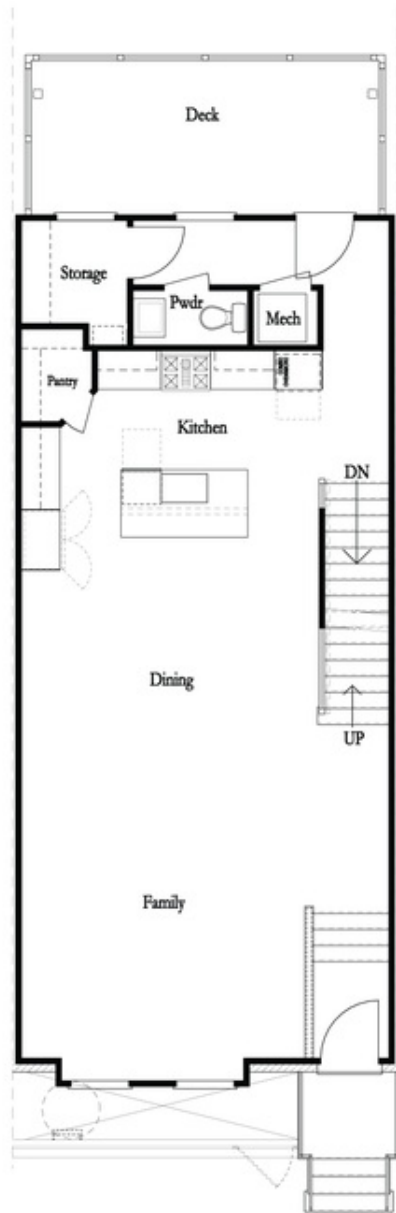
Want to Know More
About This Home?

CONTACT OUR COMMUNITY SALES MANAGER
Call Us @ 678.591.1930



Want to Know More
About This Home?

CONTACT OUR COMMUNITY SALES MANAGER
Call Us @ 678.591.1930



Want to Know More
About This Home?

CONTACT OUR COMMUNITY SALES MANAGER
Call Us @ 678.591.1930



Want to Know More
About This Home?

CONTACT OUR COMMUNITY SALES MANAGER
Call Us @ 678.591.1930

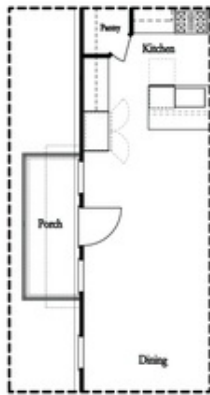


*Left End
 Opt. Sprinkler Room*



*Right End
 Opt. Sprinkler Room*

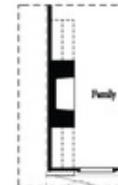
Terrace Level Options



*Optional Side Porch
 End Unit Only



Opt. Sunroom



Opt. 36" Fireplace



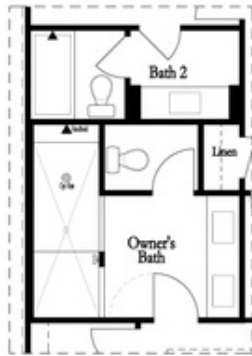
Opt. Linear Fireplace

Main Level Options

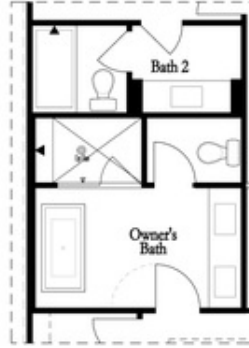
Want to Know More
 About This Home?

CONTACT OUR COMMUNITY SALES MANAGER
 Call Us @ 678.591.1930

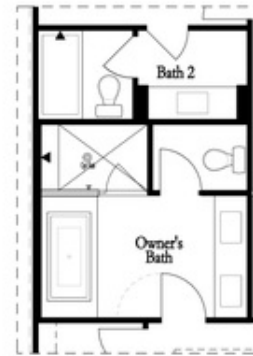
Options



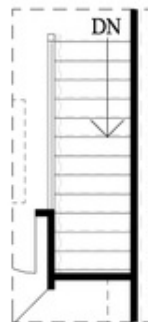
Opt. Walk-Through
Shower



Opt. Freestanding
Tub/Shower Combo



Opt. Decked
Tub/Shower Combo



Opt. Open Rail

Third Floor Options

Want to Know More
About This Home?

CONTACT OUR COMMUNITY SALES MANAGER
Call Us @ 678.591.1930