



PRICED AT
\$681,700

 2145 Sq Ft

 3 Beds

 2.5 Baths

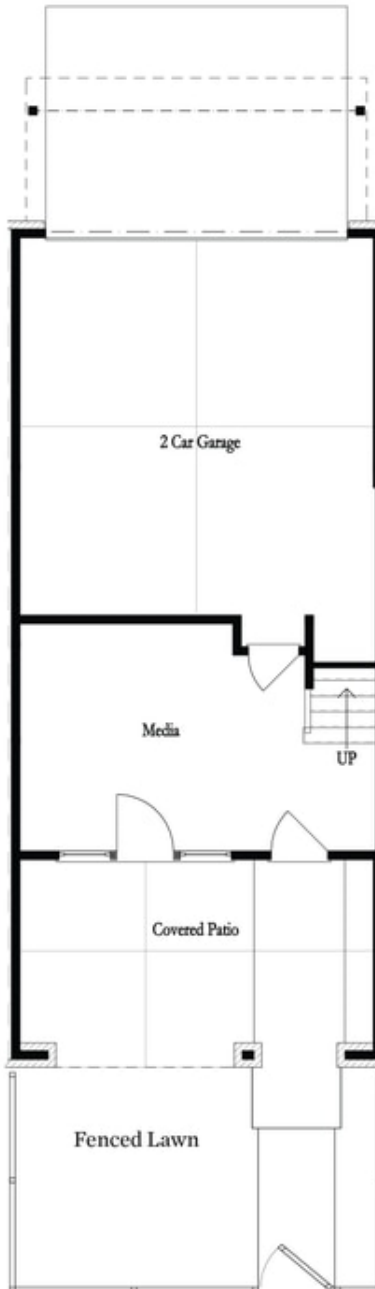
 2 Car Garage

 3.0 Story

SPRING INOT A NEW HOME This beautiful Floor Plan, Benton I, features a Terrace Level entry into a large media room with a slider door that opens to the covered patio. Our Cool Linen Design Collection offers 42" White Cabinets, Calacatta Ultra Quartz kitchen countertops, a single bowl sink, 12x24 tile backsplash and stainless appliances provides a clean, modern feel in the kitchen. The Kitchen island overlooks spacious dining area and Living Room with cozy fireplace. Tucked away behind the Kitchen wall is a nice Sunroom with opening to a private deck, perfect for reading and relaxing. The Laundry Room is at the main level with a Tankless Water Heater. The Owner Suite offers a private full bath with a mega walk in shower w/ drying area, dual vanity and a large walk in closet. The upper hallway will lead to 2 Secondary Bedrooms along with another full bath. 2 car garage with a 2 car driveway and extra storage space. Low maintenance living at its best w/ HOA maintaining exteriors, fenced courtyard & more. Just minutes away from several dining options, retail spaces, walking trails & more. Ready to move in May - June 2024 Available for purchase ...

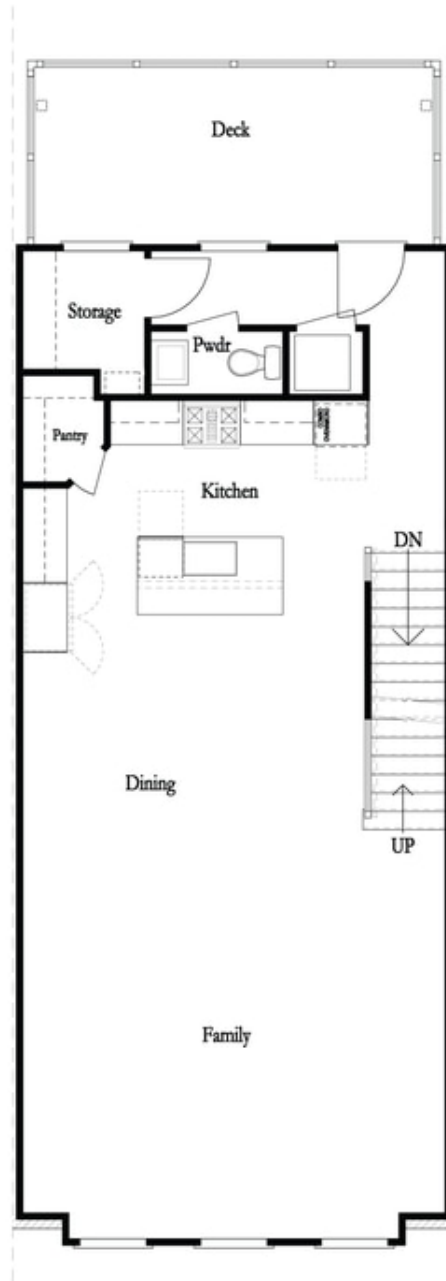
**Want to Know More
About This Home?**

CONTACT OUR COMMUNITY SALES MANAGER
Call Us @ 678.591.1930



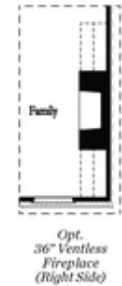
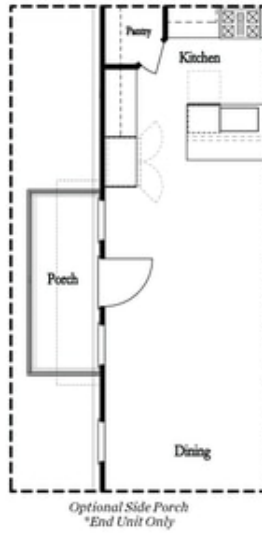
**Want to Know More
About This Home?**

CONTACT OUR COMMUNITY SALES MANAGER
Call Us @ 678.591.1930

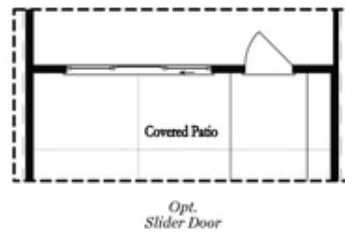
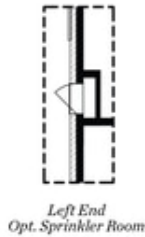


**Want to Know More
About This Home?**

CONTACT OUR COMMUNITY SALES MANAGER
Call Us @ 678.591.1930



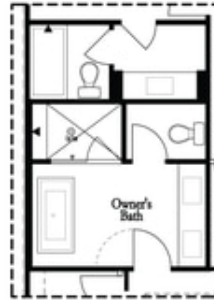
Main Level Options



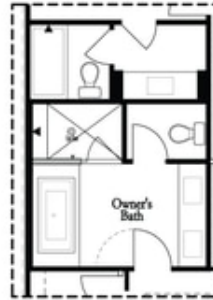
Terrace Level Options

Want to Know More
About This Home?

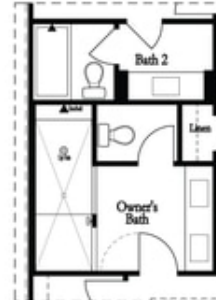
CONTACT OUR COMMUNITY SALES MANAGER
Call Us @ 678.591.1930



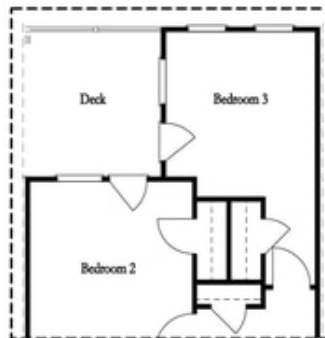
*Opt. Freestanding
 Tub/Shower Combo*



*Opt. Decked
 Tub/Shower Combo*



Opt. Walk-Through Shower



*Opt. Bedroom 3
 *Only Available with Sunroom option
 Laundry Moved to Main Level w/ this Opt.

Upper Level Options

**Want to Know More
 About This Home?**

CONTACT OUR COMMUNITY SALES MANAGER
 Call Us @ 678.591.1930