



PRICED AT
\$573,850

 1694 Sq Ft

 2 Beds

 2.5 Baths

 1 Car Garage

 3.0 Story

SPRING INOT A NEW HOME Easy living is built right in at Ecco Park with top-tier craftsmanship, quality materials and HOA-maintained landscaping and lawn care. The Barnesley I floorplan on lot 47 features a terrace level entry from covered patio into a large flex space/media room. This area has a Slider door to the patio & a wet bar which makes this a perfect spot for entertaining. Head up to the main floor living space that includes a neutral palette with our Cool Stone Design Collection and Hard Surface flooring. The beautifully designed kitchen offers tons of prep space with 2 islands and includes upgraded features such as Calacatta Sierra Quartz Countertops, 42" Full Overlay Cabinets w/ soft close doors, under cabinets lighting & GE Stainless Steel Appliances. The Kitchen overlooks a spacious Dining Area and Living Room with cozy Linear Fireplace. A Large deck located off the Living Space gives you more indoor/outdoor entertainment area. You can retire to your Owners Suite on the top floor after a long day. The owners bedroom has a tray ceiling & private bath which includes dual vanity w/ quartz countertops, large walk in closet and an extended frameless shower. On the ...

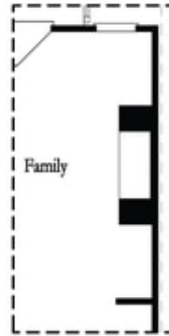
**Want to Know More
About This Home?**

CONTACT OUR COMMUNITY SALES MANAGER
Call Us @ 678.591.1930



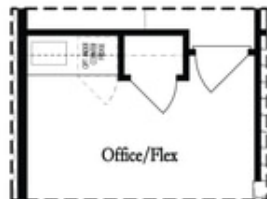
**Want to Know More
 About This Home?**

CONTACT OUR COMMUNITY SALES MANAGER
 Call Us @ 678.591.1930

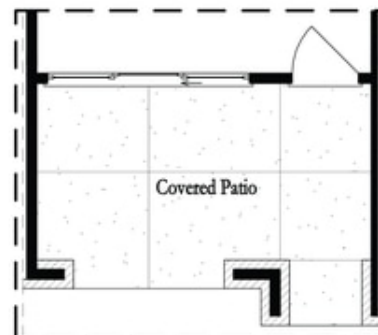


Opt. Linear Fireplace

Second Floor Options



Opt. Wet Bar



Opt. Slider Door

First Floor Options

**Want to Know More
About This Home?**

CONTACT OUR COMMUNITY SALES MANAGER
Call Us @ 678.591.1930