



PRICED FROM
\$684,200

 1,955 - 2,201 Sq Ft

 2 - 3 Beds

 2.5 Baths

 2 Car Garage

 3.0 Story

- Gourmet Kitchen with Island
- Owner's Suite and Private Bath with Dual Vanities and Large Walk-In Shower
- Media room on Terrace Level
- Covered Porch
- Two Car Garage

[Read More Online](#)

Available Elevations



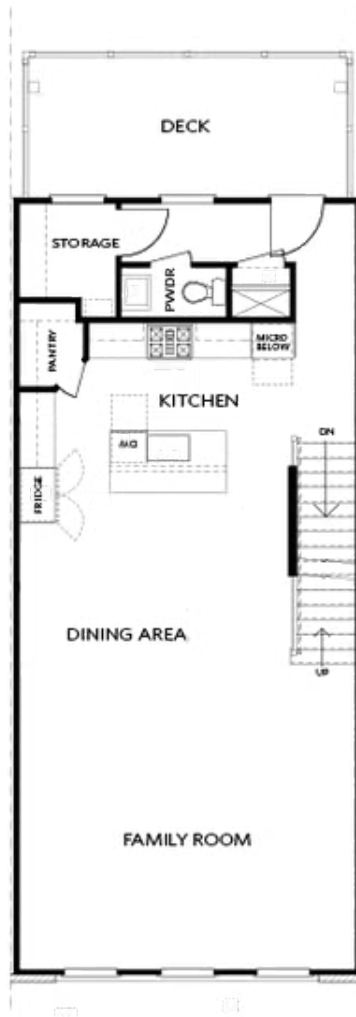


TERRACE

Elevation N

Want to Know More
About This Home?

CONTACT OUR COMMUNITY SALES MANAGER
Call Us @ 678.591.1930



SECOND FLOOR

Elevation N

Want to Know More
About This Home?

CONTACT OUR COMMUNITY SALES MANAGER
Call Us @ 678.591.1930

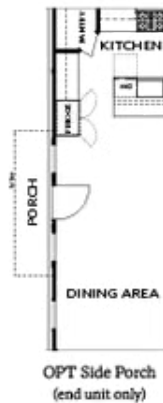


THIRD FLOOR

Elevation N

Want to Know More
About This Home?

CONTACT OUR COMMUNITY SALES MANAGER
Call Us @ 678.591.1930



TERRACE

SECOND FLOOR

OPTIONS

Want to Know More
About This Home?

CONTACT OUR COMMUNITY SALES MANAGER
Call Us @ 678.591.1930



OPT Open Rail



OPT Bedroom 3 - ONLY Available
with Optional Sunroom



OPT Walk-Through Shower



OPT Freestanding
Tub/Shower Combo



OPT Decked Tub/
Shower Combo

OPTIONS

Want to Know More
About This Home?

CONTACT OUR COMMUNITY SALES MANAGER
Call Us @ 678.591.1930