



PRICED FROM
\$706,500

 **2,163 - 2,395 Sq Ft**

 **3 Beds**

 **3.5 Baths**

 **2 Car Garage**

 **3.0 Story**

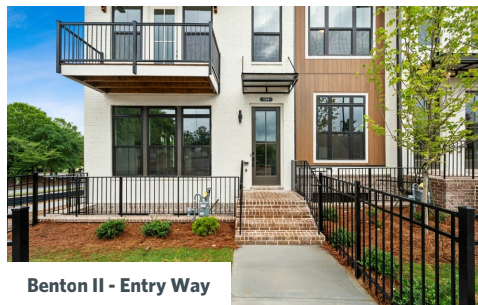
- **Gourmet Kitchen with Island**
- **Owner's Suite and Private Bath with Dual Vanities and Large Walk-In Shower**
- **Bedroom with Private Bath on Terrace Level**
- **Two Car Garage**

[Read More Online](#)

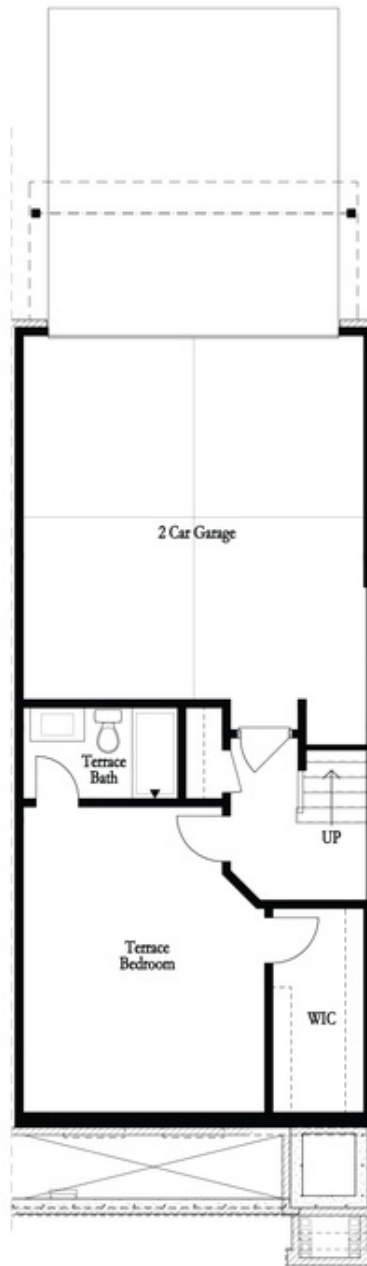
Available Elevations



**Benton II and Barnsley II -
Elevation**

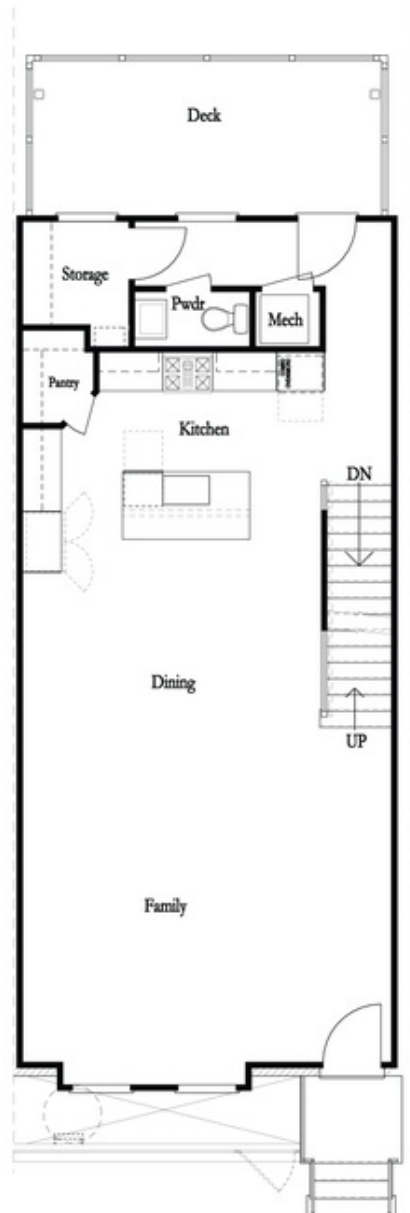
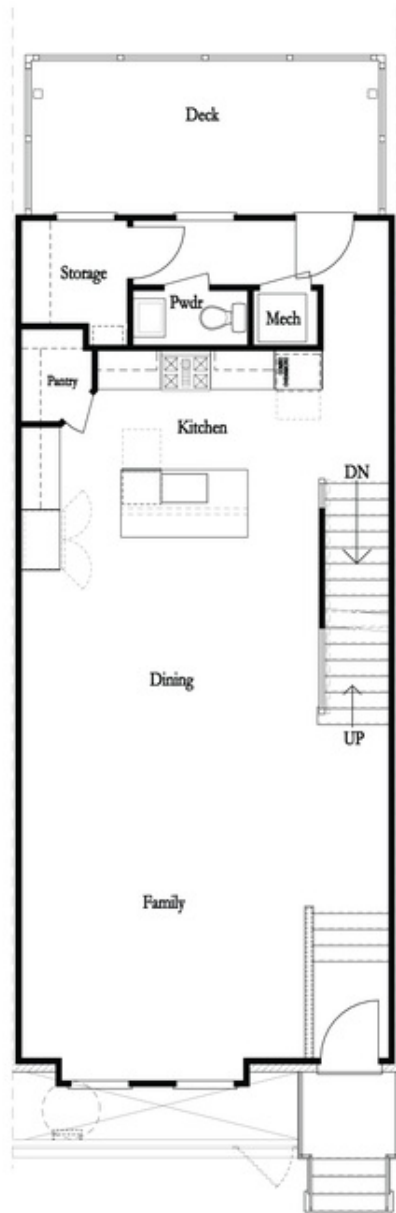


Benton II - Entry Way



Want to Know More
About This Home?

CONTACT OUR COMMUNITY SALES MANAGER
Call Us @ 678.591.1930



Want to Know More
About This Home?

CONTACT OUR COMMUNITY SALES MANAGER
Call Us @ 678.591.1930



Want to Know More
 About This Home?

CONTACT OUR COMMUNITY SALES MANAGER
 Call Us @ 678.591.1930

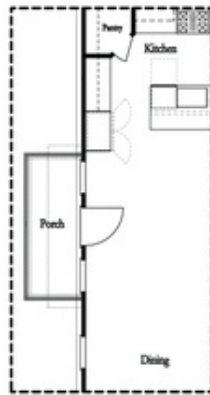


*Left End
 Opt. Sprinkler Room*



*Right End
 Opt. Sprinkler Room*

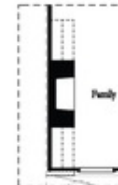
Terrace Level Options



*Optional Side Porch
 End Unit Only



Opt. Sunroom



Opt. 36" Fireplace



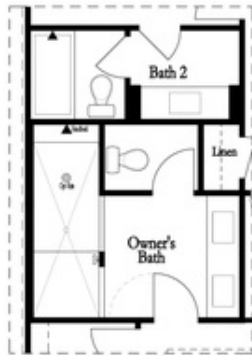
Opt. Linear Fireplace

Main Level Options

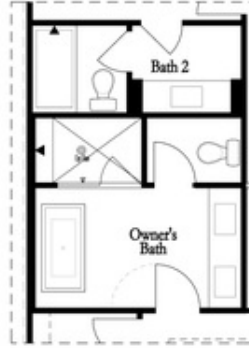
Want to Know More
 About This Home?

CONTACT OUR COMMUNITY SALES MANAGER
 Call Us @ 678.591.1930

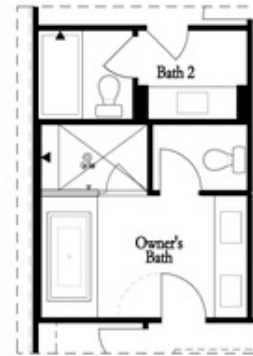
Options



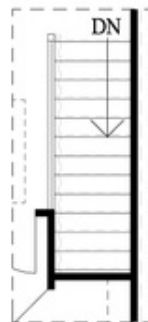
Opt. Walk-Through
Shower



Opt. Freestanding
Tub/Shower Combo



Opt. Decked
Tub/Shower Combo



Opt. Open Rail

Third Floor Options

Want to Know More
About This Home?

CONTACT OUR COMMUNITY SALES MANAGER
Call Us @ 678.591.1930