



PRICED FROM
\$706,500

 2,163 - 2,395 Sq Ft

 3 Beds

 3.5 Baths

 2 Car Garage

 3.0 Story

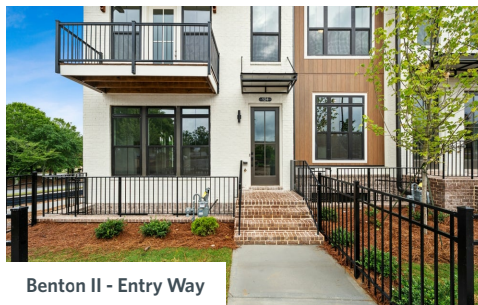
- Gourmet Kitchen with Island
- Owner's Suite and Private Bath with Dual Vanities and Large Walk-In Shower
- Bedroom with Private Bath on Terrace Level
- Two Car Garage

[Read More Online](#)

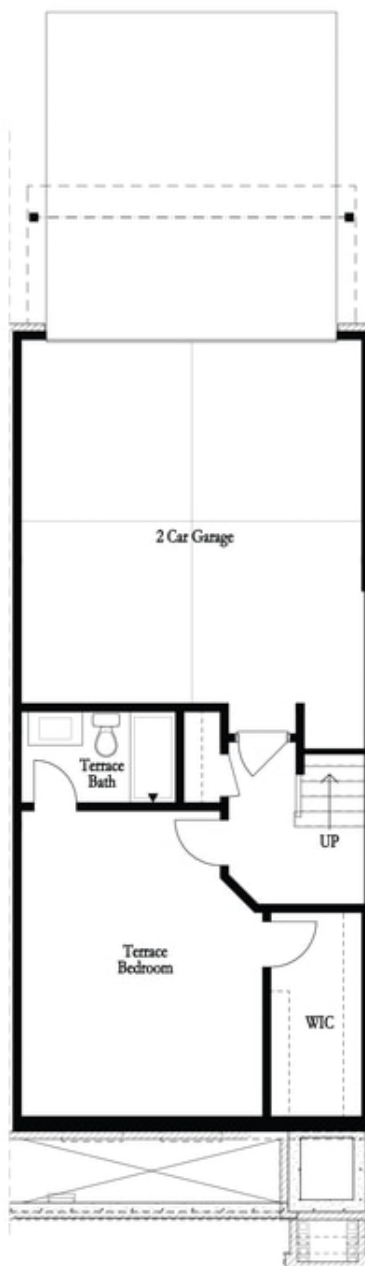
Available Elevations



Benton II and Barnsley II - Elevation



Benton II - Entry Way

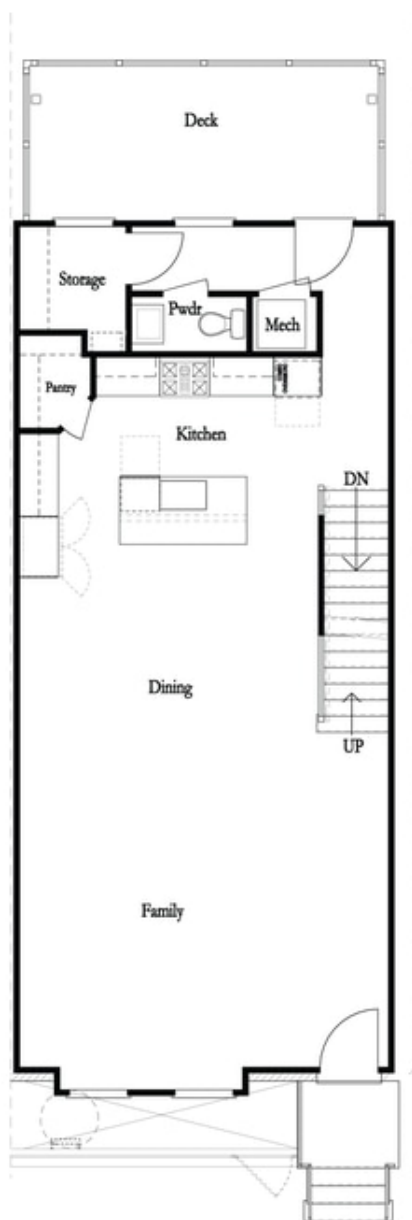
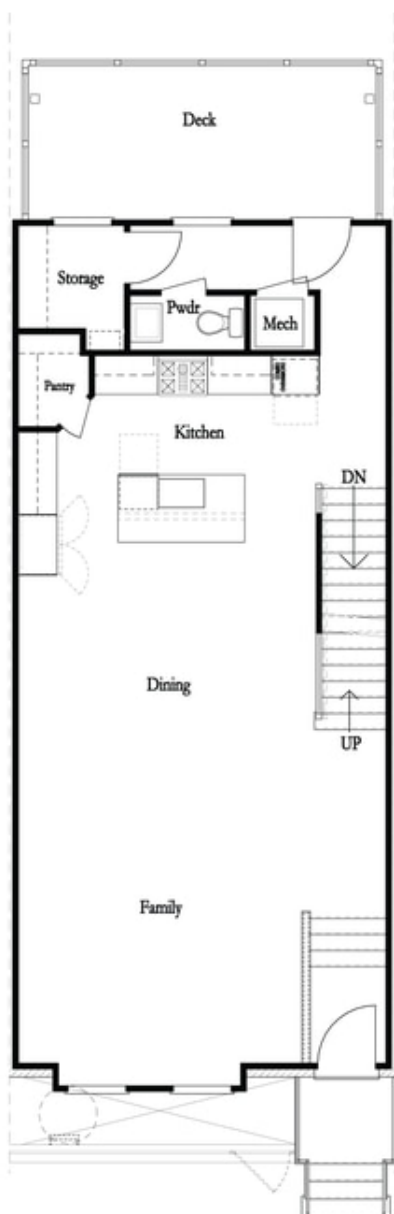


Want to Know More
About This Home?

CONTACT OUR NEW HOME NAVIGATOR

NONE

Call Us @ (678) 591-1930



Want to Know More
About This Home?

CONTACT OUR NEW HOME NAVIGATOR

NONE

Call Us @ (678) 591-1930



Want to Know More
About This Home?

CONTACT OUR NEW HOME NAVIGATOR

NONE

Call Us @ (678) 591-1930

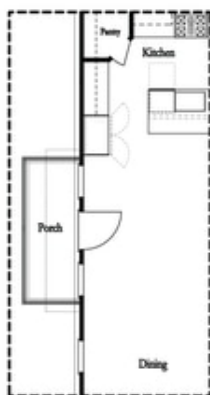


Left End
Opt. Sprinkler Room



Right End
Opt. Sprinkler Room

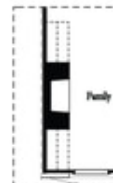
Terrace Level Options



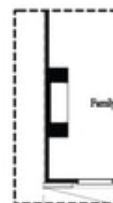
Optional Side Porch
*End Unit Only



Opt. Sunroom



Opt. 36" Fireplace



Opt. Linear Fireplace

Main Level Options

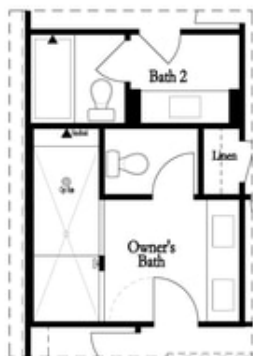
Want to Know More
About This Home?

CONTACT OUR NEW HOME NAVIGATOR

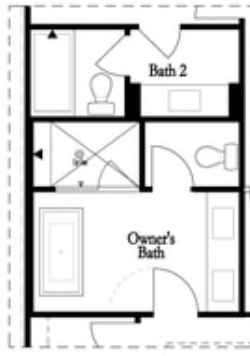
NONE

Call Us @ (678) 591-1930

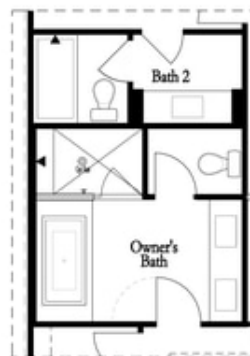
Options



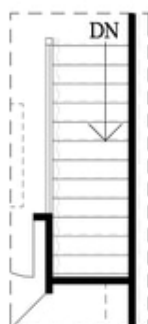
Opt. Walk-Through
Shower



Opt. Freestanding
Tub/Shower Combo



Opt. Decked
Tub/Shower Combo



Opt. Open Rail

Third Floor Options

Want to Know More
About This Home?

CONTACT OUR NEW HOME NAVIGATOR

NONE

Call Us @ (678) 591-1930